



European  
Road  
Safety  
Observatory

www.erso.eu



# Annual Statistical Report 2007

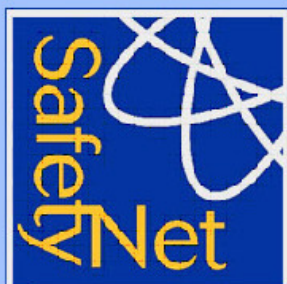
Based on data from CARE / EC

## SafetyNet

Building the European Road Safety Observatory

Workpackage 1 – Task 3

Deliverable No: D 1.16



Authors:

KfV	Austria
NTUA	Greece
SWOV	The Netherlands
TRL	United Kingdom

Workpackage Leader:

NTUA	Greece
------	--------

Task Leader:

KfV	Austria
-----	---------

Contract Number:

TREN-04-FP6TR-  
SI2.395465/506723

Project Number:

1.3.2

Acronym:

SAFETYNET

Version:

No4

Date of issue:

31/02/2008

## CONTENTS

<b>1</b>	<b>Introduction</b>	<b>3</b>
1.1	The CARE Database	3
1.2	Note to the Reader	4
<b>2</b>	<b>Overview – major issues</b>	<b>7</b>
2.1	EU-25 – Developments (includes databases other than CARE)	7
2.2	Interesting Details	8
<b>3</b>	<b>Time Series – last 10 years</b>	<b>11</b>
3.1	General time series	11
3.2	Time series related to mode of transport	15
3.3	Time series related to person age and gender	21
<b>4</b>	<b>Fatalities 2005</b>	<b>29</b>
4.1	People involved	29
4.1.1	Age and gender of persons	29
4.1.2	Age of persons by mode of transport	30
4.2	Modes of transport	33
4.2.1	Mode of transport by age of persons	33
4.2.2	Mode of transport by type of area	38
4.3	Accident characteristics	40
4.3.1	Various periods of time (month, day of week, hour of day)	40
4.3.2	Type of area/road	47
4.3.3	Type of junction	49
4.3.4	Weather conditions	51
<b>5</b>	<b>Fatal accidents 2005</b>	<b>52</b>
5.1	Various periods of time (month, day of week, hour of day)	52
5.2	Type of area / road	54
5.3	Type of junction	55
5.4	Weather conditions	56
<b>6</b>	<b>Glossary</b>	<b>57</b>
<b>7</b>	<b>List of tables</b>	<b>63</b>
<b>8</b>	<b>List of figures</b>	<b>64</b>

# 1 Introduction

## 1.1 The CARE Database

Community database on **A**ccidents on the **R**oads in **E**urope

Road traffic accidents in the Member States of the European Union annually claim about 43.000 lives and leave more than 1.8 million people injured, representing estimated costs of 160 billion euros. Since 1984, a large number of measures to reduce road accidents have been taken at a regional level. Along with these measures, the Council adopted a Decision on 30 November 1993 on the creation of a Community database on road accidents (93/704/EC)<sup>1</sup>, the CARE project.

It was commonly agreed that such a database at the Community level would make it possible to identify and quantify road safety problems, evaluate the efficiency of road safety measures, determine the relevance of Community actions and facilitate the exchange of experience in this field. After a pilot phase of about 3 years, the Council endorsed the "Report from the Commission on the progress with the project and its future prospects" (COM(97) 238 final).

CARE is a Community database on road accidents resulting in death or injury (no statistics on damage-only accidents are kept). The major difference between CARE and most other existing international databases is the high level of disaggregation, i.e. CARE is based on detailed data of individual accidents as collected by the Member States. This structure allows for maximum flexibility and potential with regard to analysing the information contained in the system and opens up a whole set of new possibilities in the field of accident analysis.

National data sets are integrated into the CARE database in their original national structure and definitions, with confidential data blanked out. However, transformation rules are implemented in the CARE database in order to increase data compatibility and thus enhance the functioning of the system.

The process of improving "homogenisation" of accident data within CARE is underway. In the meantime, the inherent incompatibility of national accident data remains a source of possible misinterpretation when performing comparative analyses at international level. Therefore, on-line access to the CARE database is currently restricted to expert users. The summary statistical tables and figures contained here provide an overview of road accident data from 1996 to 2005 (EU-15 and EU-19 without Germany). For some figures other sources than CARE have been used in order to give an overview of EU-25 road accident data.

---

<sup>1</sup> OJ No 329, 30.12.1993, p. 63.

## 1.2 Note to the Reader

This Annual Statistical Report provides the basic characteristics of road accidents in 18 member states of the European Union for the period 1996-2005, on the basis of data collected and processed in the CARE database, the Community Road Accident Database with disaggregate data (Council Decision EEC 93/704 final).

The period 1996-2005 has been used in order to maximize the sample of data. However, data for some countries and corresponding years were not yet available in the CARE database at the date of drafting this report. As you can see in following table, four new countries (EE, HU, MT, PL) were included in 2005. These countries were considered in the tables and figures, where no time line is used. For example if there are comparisons with the year 1996 only EU-14 (the EU-15 excluding Germany) is used.

The next table shows which data from the EU-25 are available in the CARE database (x) and used in this report .

x

Code	Country	1991-1995	1996	1997	1998	1999	2000	2001	2002	2003	2004	2005	2006
BE	Belgium	x	x	x	x	x	x	x	x	x	x	x	x
CZ	Czech Republic												
DK	Denmark	x	x	x	x	x	x	x	x	x	x	x	x
DE	Germany												
EE	Estonia										x <sup>1</sup>	x	
EL	Greece	x	x	x	x	x	x	x	x	x	x	x	x
ES	Spain	x	x	x	x	x	x	x	x	x	x	x	
FR	France	x	x	x	x	x	x	x	x	x	x	x	x
IE	Ireland	x	x	x	x	x	x	x	x	x			
IT	Italy	x	x	x	x	x	x	x	x	x	x		
CY	Cyprus												
LV	Latvia												
LT	Lithuania												
LU	Luxembourg	x	x	x	x	x	x	x	x				
HU	Hungary											x	
MT	Malta											x	
NL	The Netherlands	x	x	x	x	x	x	x	x	x			
AT	Austria	x	x	x	x	x	x	x	x	x	x	x	x
PL	Poland											x	
PT	Portugal	x	x	x	x	x	x	x	x	x	x	x	x
SI	Slovenia												
SK	Slovakia												
FI	Finland	x	x	x	x	x	x	x	x	x	x	x	
SW	Sweden	x	x	x	x	x	x	x	x	x	x	x	
UK	United Kingdom (GB+NI)	x	x	x	x	x	x	x	x	x	x	x	

<sup>1</sup>) Test data only

The reader should be aware of the following remarks concerning the contents of this Annual Statistical Report:

- It should be taken into account that analysis and comparisons of the numbers of accidents and injuries are not always possible, as different definitions exist in each EU Member State.
- Fatality data are compatible between countries and use common definitions as a result of the CAREPLUS 1 and CAREPLUS 2<sup>2</sup> project. Corrective factors have been applied to comply with the international definition of people killed within 30 days after an accident. ([http://ec.europa.eu/transport/roadsafety/road\\_safety\\_observatory/doc/care\\_glossary.pdf](http://ec.europa.eu/transport/roadsafety/road_safety_observatory/doc/care_glossary.pdf)).
- On fatal accidents data, no corrective factors have been applied to comply with the international definition of persons killed within 30 days.
- Minor differences in totals are due to rounding-off differences of data.
- “Unknown” values are not displayed in tables, but totals include the unknowns.
- The EU totals for all people killed are not necessarily the sum of each sub-division of these persons, given that there are no data available for all sub-divisions and all countries. Corresponding percentages refer to the available data.
- Partial or complete reproduction of these statistics is permitted if the source is mentioned and accompanied with the present remarks.

- The basic characteristics of fatal road accidents in the EU member states have been selected as those which might be useful for road accident analysis and where data are available for all or most of the EU countries (these are results of CAREPLUS project on making accident data comparable). More characteristics are available since the CAREPLUS 2 project. More precisely, the basic characteristics of fatal road accidents refer to:

**Person class** (driver, passenger, pedestrian)

**Person killed** (age groups and/or gender)

**Area type** (inside or outside urban area)

**Motorway** (yes or no)

**Junction type** (crossroad, level crossing, not at a junction, roundabout, T or Y junction)

**Weather conditions** (dry, fog or mist, rain, snow/sleet/hail, strong wind)

**Modes of transport – vehicle group** (agricultural tractor, bus or coach [>8 seats], car or taxi, heavy goods vehicles, lorry under 3,5 tons, pedal cycle, moped, motorcycle, other)

**Month** (January to December)

**Day of the week** (Monday to Sunday)

**Hour** (0-24)

- This report is amongst the first outcomes of the CARE database. The validation of the CARE system is not yet finished and minor amendments to the figures presented might be necessary. Comments can be addressed to [safetynet@lboro.ac.uk](mailto:safetynet@lboro.ac.uk).

<sup>2</sup> Cete-Sud Ouest (1997), A proposal for improving the comparability of road accidents within EU Member States using the CARE Database, CAREPLUS 1 Consortium, Bordeaux.

Cete-Sud Ouest (2000), A proposal for improving the comparability of road accidents within EU Member States using the CARE Database, CAREPLUS 2 Consortium, Bordeaux

## Disclaimer

The information in this document is provided as it is and no guarantee or warranty is given that the information is fit for any particular purpose. Therefore, the reader uses the information at their own risk and liability.

## For more information

Further statistical information about fatalities is available from the CARE database at the Directorate-General for Energy and Transport of the European Commission, 28 Rue de Mot, B-1040 Brussels (see [ec.europa.eu/transport/roadsafety/road\\_safety\\_observatory/care\\_reports\\_en.htm](http://ec.europa.eu/transport/roadsafety/road_safety_observatory/care_reports_en.htm)).

Traffic Safety Basic Fact Sheets available from the European Commission concern:

- Main Figures
- Children (Aged <16)
- Young People (Aged 16-24)
- The Elderly (Aged >64)
- Pedestrians
- Bicycles
- Motorcycle and Mopeds
- Car-Occupants
- Heavy Goods Vehicles & Buses
- Motorways
- Junctions
- Urban Areas

All these reports and more information about the integrated project "SafetyNet" which is co-financed by the European Commission, Directorate-General Energy and Transport are also available at the SafetyNet website: [www.erso.eu/](http://www.erso.eu/).

### Authors:

Stefan Hoeglinger, Doppelhammer Eva	KfV, Austria
Niels Bos and Ellen Berends	SWOV, The Netherlands
George Yannis, Petros Evgenikos, Antonis Chaziris	NTUA, Greece
Jeremy Broughton, Brian Lawton and Louise Walter	TRL, United Kingdom

## 2 Overview – major issues

### 2.1 EU-25 – Developments (includes databases other than CARE)

Figure 1: Annual number of fatalities, injury accidents and injured people (EU-25), 1996-2005

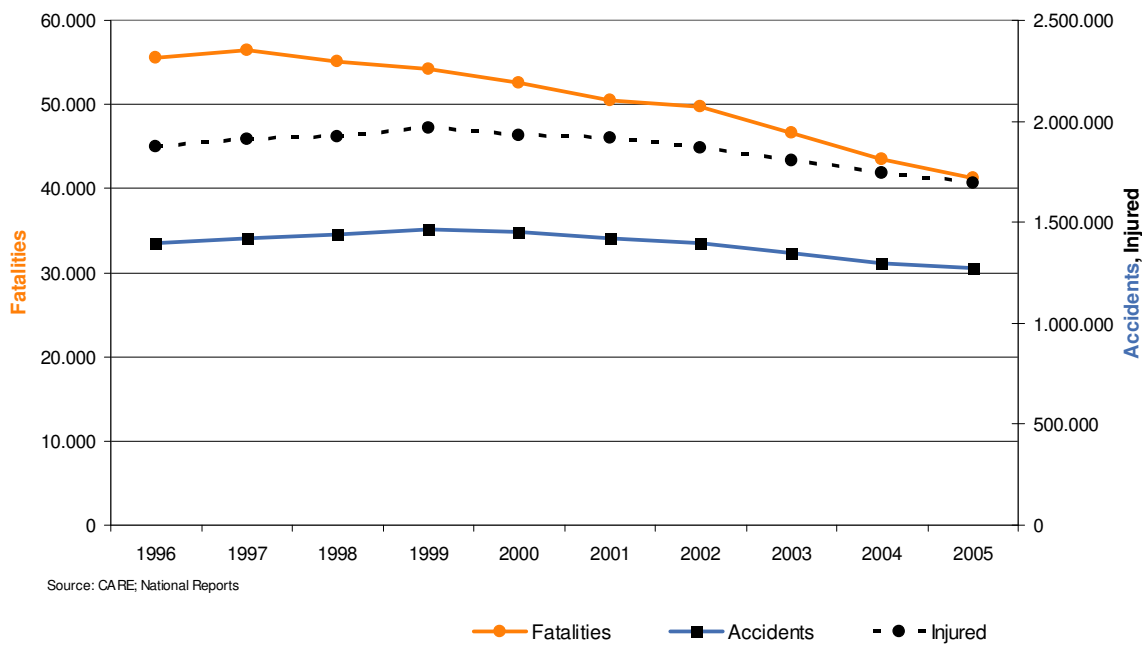
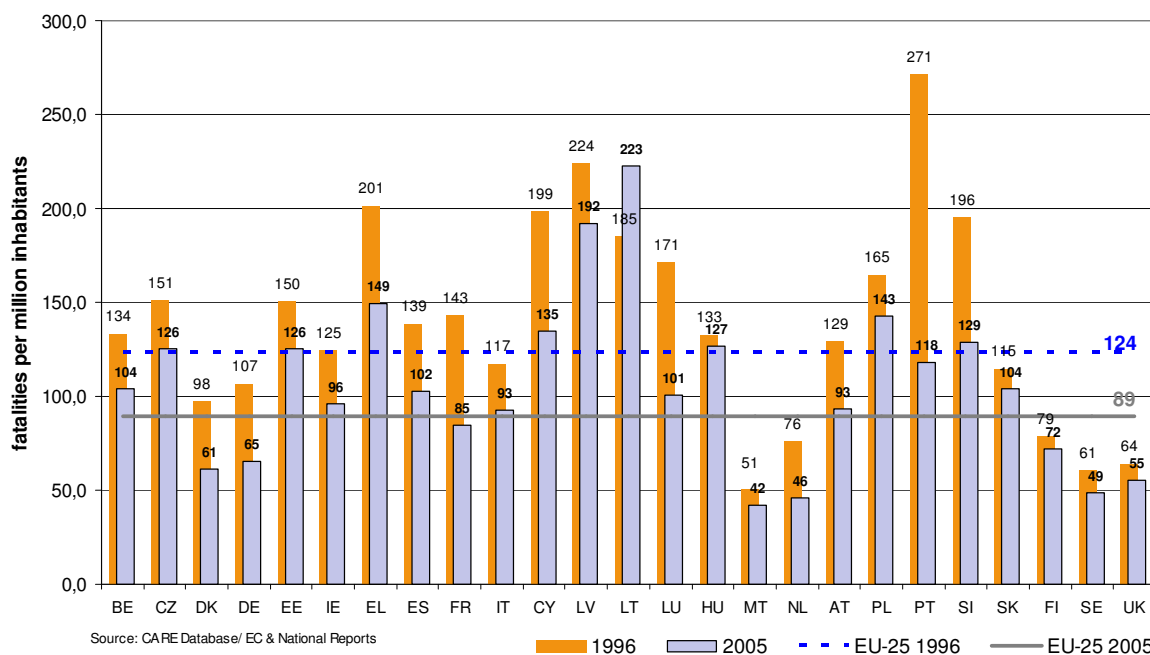


Figure 2: Fatalities per million inhabitants, 2005 compared to 1996 (EU-25)



## 2.2 Interesting Details

Figure 3: Share of fatalities by area type, 2005\*

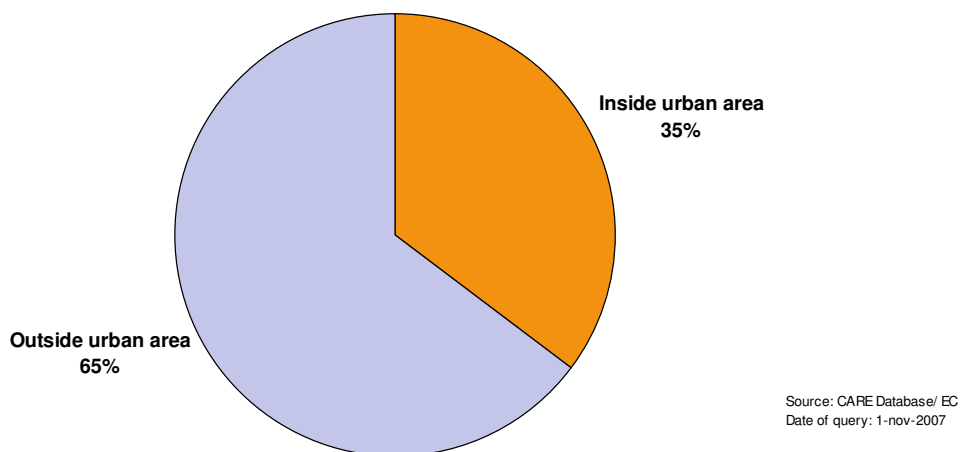
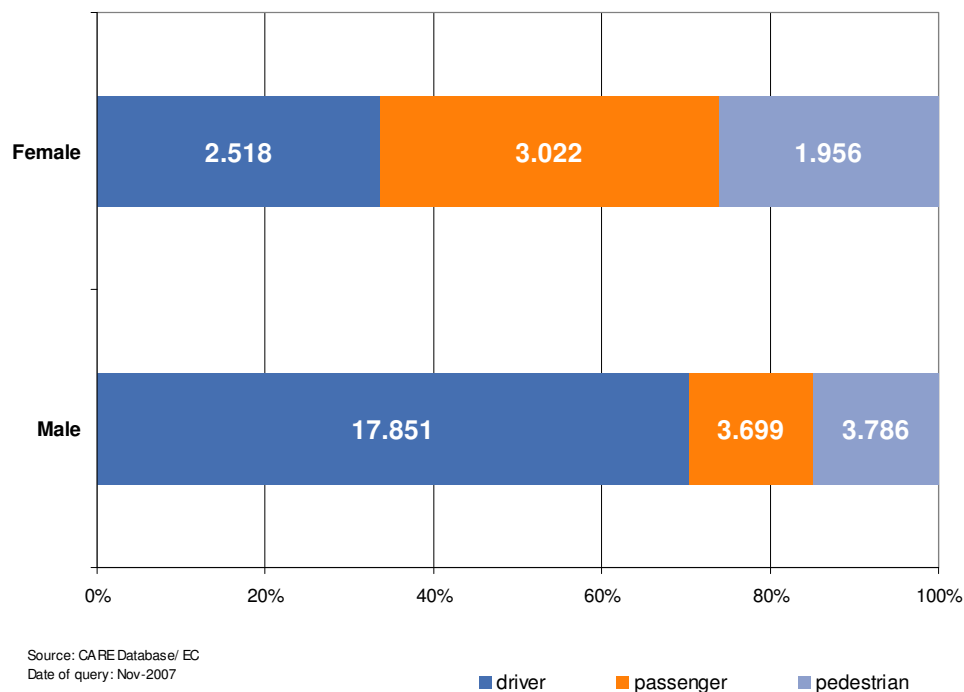


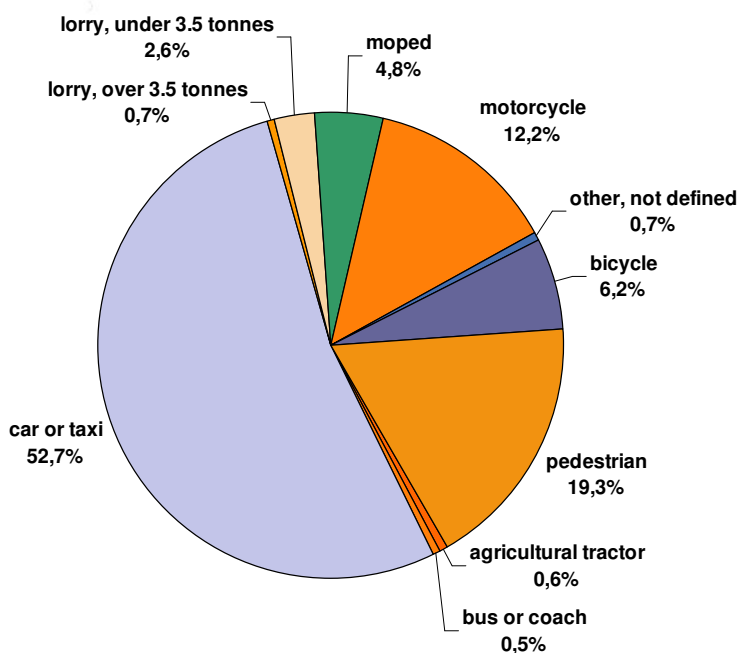
Figure 4: Distribution of male and female fatalities by person class, 2005\*



\* EU-19 without DE; IT: 2004, IE & NL: 2003, LU: 2002

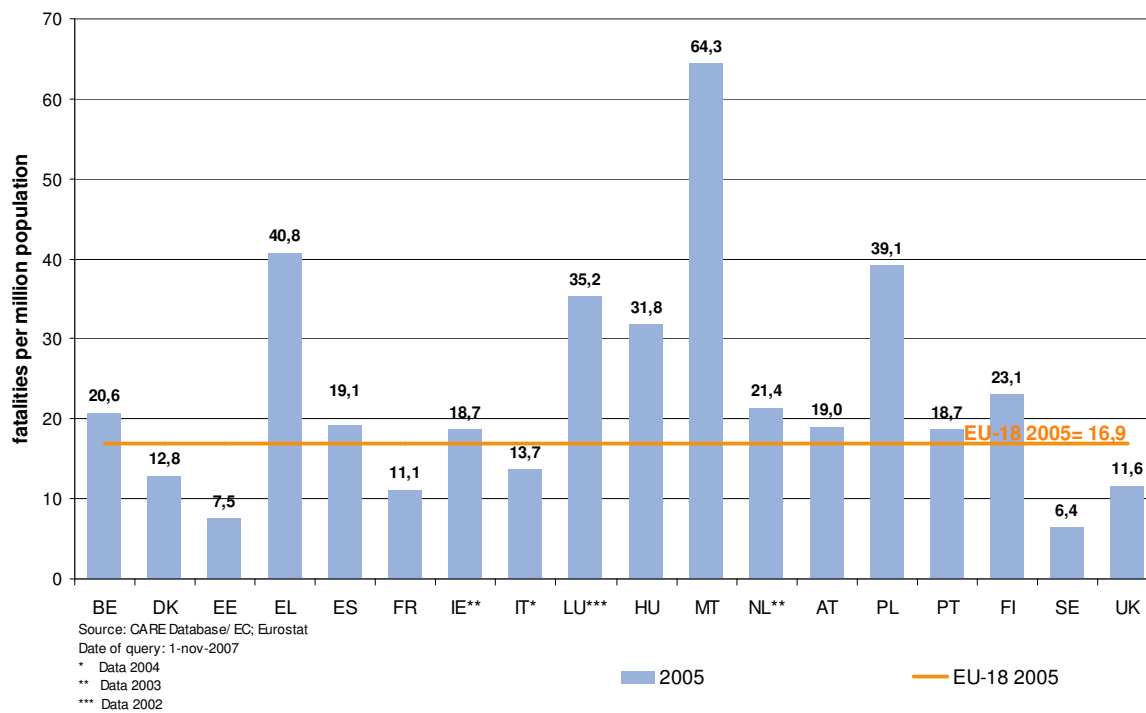


Figure 5: Distribution of fatalities by mode of transport, 2005\*



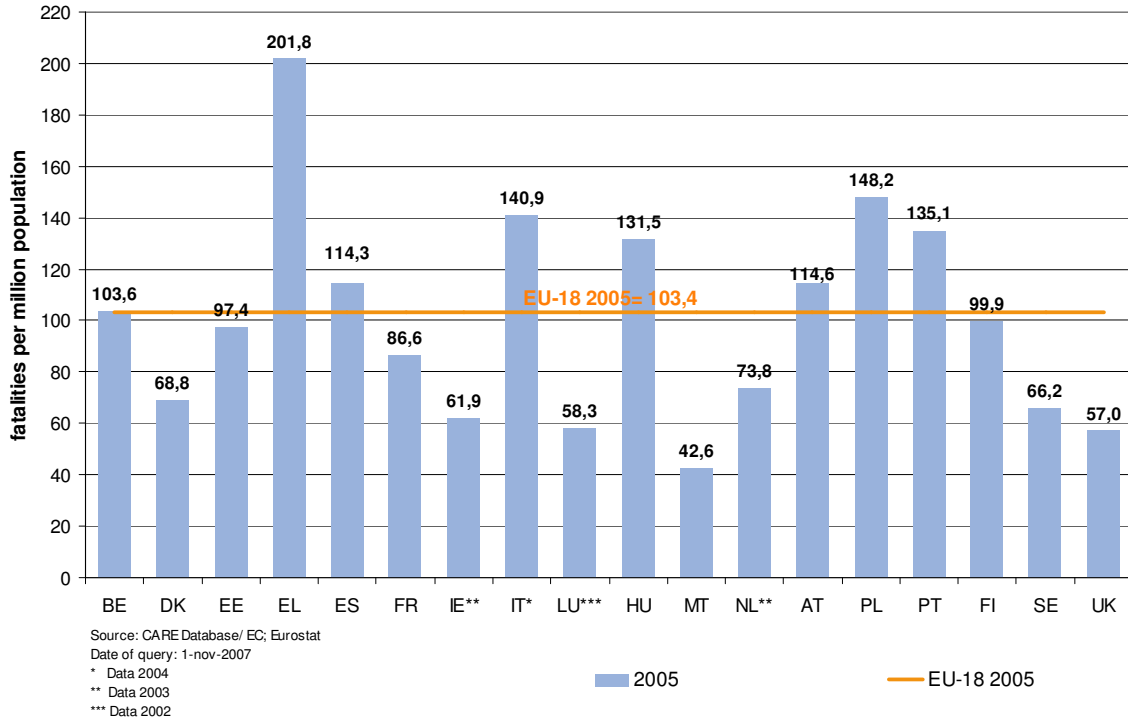
Source: CARE Database/ EC  
Date of query: Nov-2007

Figure 6: Fatalities of children per million inhabitants (aged 0-14 years), 2005



\* EU 19 without DE ; IT: 2004, IE & NL: 2003, LU: 2002

Figure 7: Fatalities of seniors per million inhabitants (aged 65+), 2005



## 3 Time Series – last 10 years

### 3.1 General time series

Figure 8: Percentage change in number of fatalities and injury accidents by country (2005 compared to 1996)

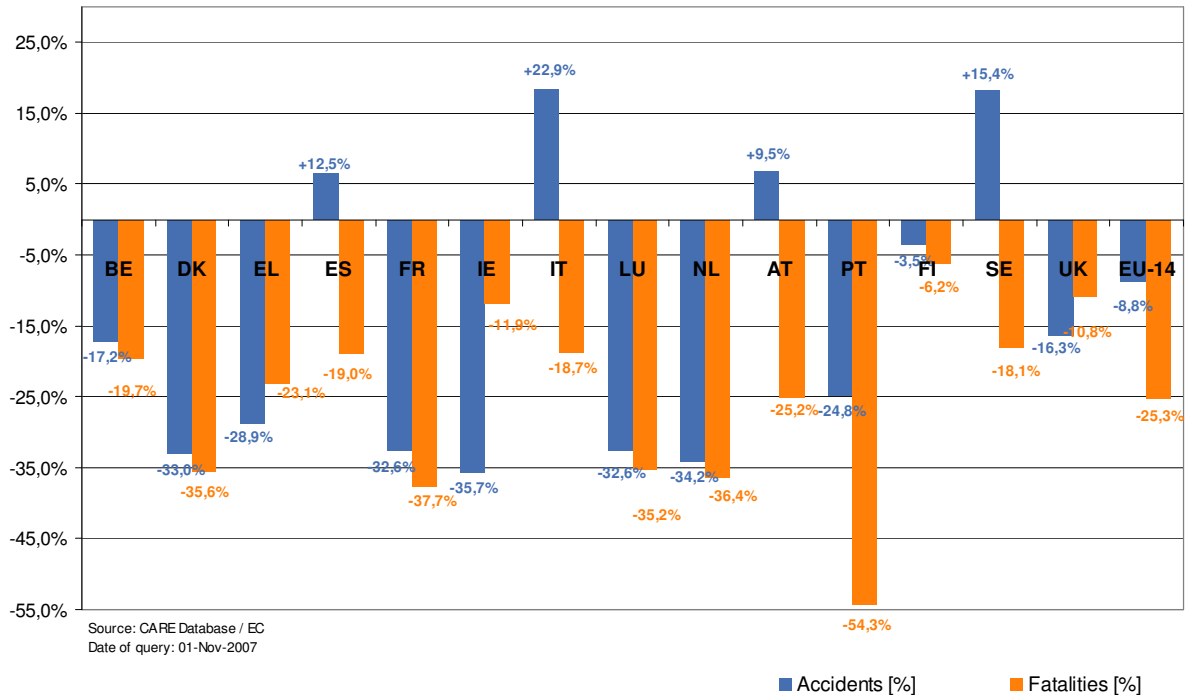


Table 1: Annual number of injury accidents by country, 1996-2005

	1996	1997	1998	1999	2000	2001	2002	2003	2004	2005
BE	48.750	50.078	51.167	51.601	49.065	47.444	47.444	43.693	44.175	40.366
DK	8.080	8.004	7.556	7.605	7.346	6.856	7.121	6.749	6.209	5.412
EE	-	-	-	-	-	-	-	-	-	2.341
EL	23.775	24.295	24.819	24.231	23.001	19.671	16.809	15.751	15.547	16.914
ES	85.588	86.062	97.570	97.811	101.729	100.393	98.433	99.987	94.009	91.187
FR	125.406	125.202	124.387	124.524	121.223	116.745	105.470	90.220	85.390	84.525
IE	8.686	8.496	8.239	7.806	7.749	6.909	6.625	5.984	5.781	5.586
IT	190.068	190.031	204.615	225.646	229.034	235.409	239.354	231.740	224.553	225.078
LU	1.050	1.016	1.058	1.076	899	772	769	664	692	708
HU	-	-	-	-	-	-	-	-	-	20.777
MT	-	-	-	-	-	-	-	-	-	848
NL	41.041	41.036	41.299	42.271	42.271	35.313	33.538	31.635	27.760	27.013
AT	38.253	39.695	39.225	42.348	42.126	43.073	43.175	43.423	42.657	40.896
PL	-	-	-	-	-	-	-	-	-	48.100
PT	49.265	49.417	49.357	48.508	44.463	42.521	42.219	41.377	38.930	37.066
FI	7.274	6.980	6.902	6.997	6.633	6.451	6.196	6.907	6.767	7.020
SE	15.321	15.752	15.514	15.834	15.770	15.796	16.947	18.365	18.029	18.094
UK	243.286	247.479	246.410	242.610	242.117	236.461	234.247	220.079	213.043	203.682
EU-14	885.843	893.543	918.118	938.868	933.426	913.814	898.347	856.574	823.542	875.613
Yearly Change	-	0,9%	2,8%	2,3%	-0,6%	-2,1%	-1,7%	-4,6%	-3,9%	6,3%

Source: CARE Database / EC  
Date of query: 01-Nov-2007

Figure 9: Annual number of injury accidents by country (BE – IT), 1996-2005\*

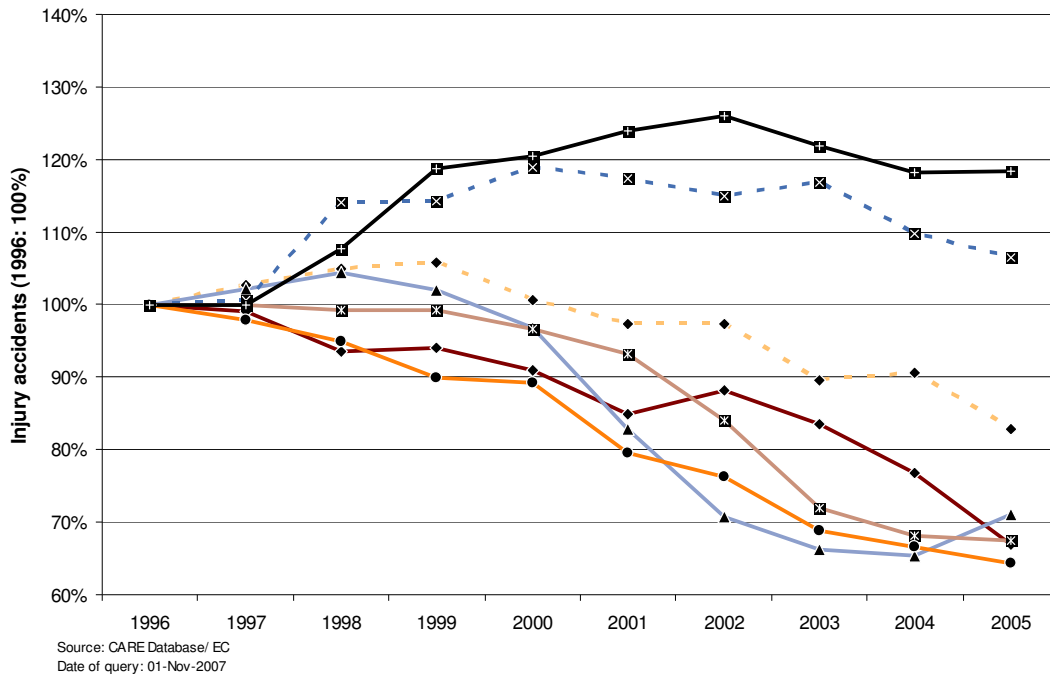
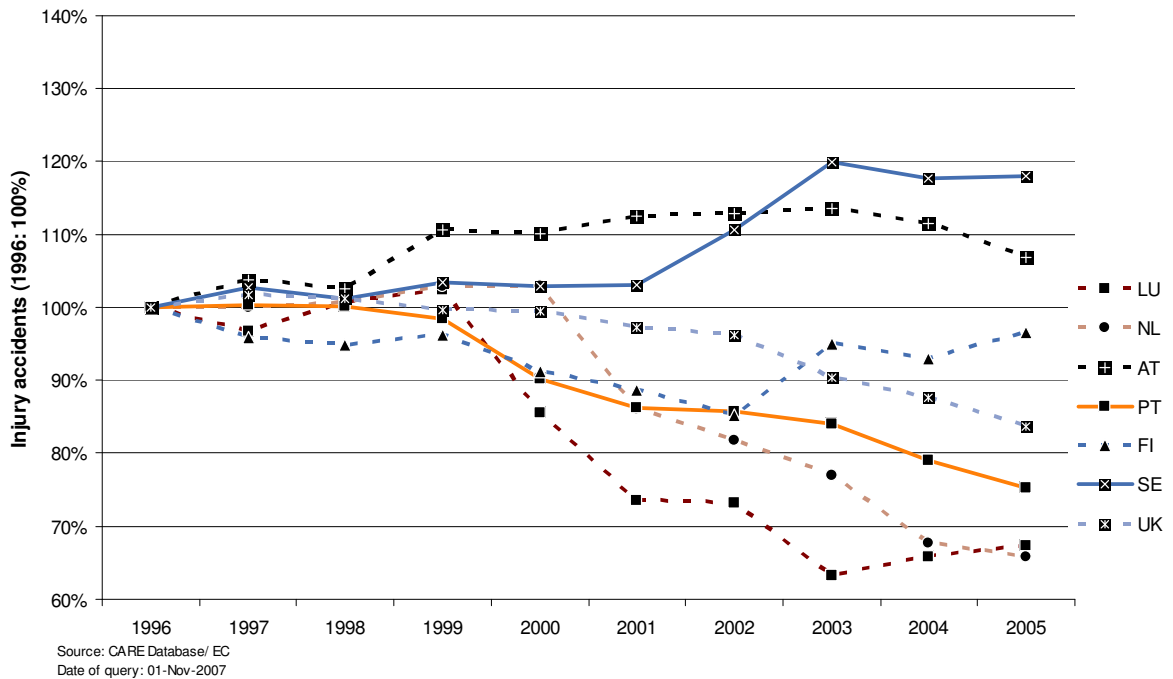


Figure 10: Annual number of injury accidents by country (LU-UK), 1996-2005\*



\* IT: 2004, IE & NL: 2003, LU: 2002

**Table 2: Annual number of fatalities by country, 1996-2005**

	1996	1997	1998	1999	2000	2001	2002	2003	2004	2005
BE	1.356	1.364	1.500	1.397	1.470	1.486	1.306	1.213	1.162	1.089
DK	514	489	499	514	498	431	463	432	369	331
EE	-	-	-	-	-	-	-	-	-	169
EL	2.157	2.105	2.182	2.116	2.037	1.880	1.634	1.605	1.670	1.658
ES	5.482	5.604	5.957	5.738	5.777	5.516	5.347	5.400	4.741	4.442
FR	8.541	8.444	8.918	8.487	8.079	8.160	7.655	6.058	5.530	5.318
IE	453	473	458	414	418	412	378	337	-	-
IT	6.676	6.713	6.314	6.688	6.649	6.691	6.739	6.065	5.625	-
LU	71	60	57	58	76	70	62	-	-	-
HU	-	-	-	-	-	-	-	-	-	1.278
MT	-	-	-	-	-	-	-	-	-	17
NL	1.180	1.163	1.066	1.090	1.082	993	987	1.028	-	-
AT	1.027	1.105	963	1.079	976	958	956	931	878	768
PL	-	-	-	-	-	-	-	-	-	5.444
PT	2.730	2.521	2.126	1.995	1.857	1.671	1.675	1.546	1.294	1.247
FI	404	438	400	431	396	433	415	379	375	379
SE	537	541	531	580	591	583	560	529	480	440
UK	3.740	3.743	3.581	3.564	3.580	3.598	3.581	3.658	3.368	3.336
EU-14 <sup>2</sup>	34.868	34.763	34.552	34.151	33.486	32.882	31.758	29.243 <sup>1</sup>	26.919 <sup>1</sup>	26.060 <sup>1</sup>
Yearly Change		-0,3%	-0,6%	-1,2%	-1,9%	-1,8%	-3,4%	-7,9%	-7,9%	-3,2%

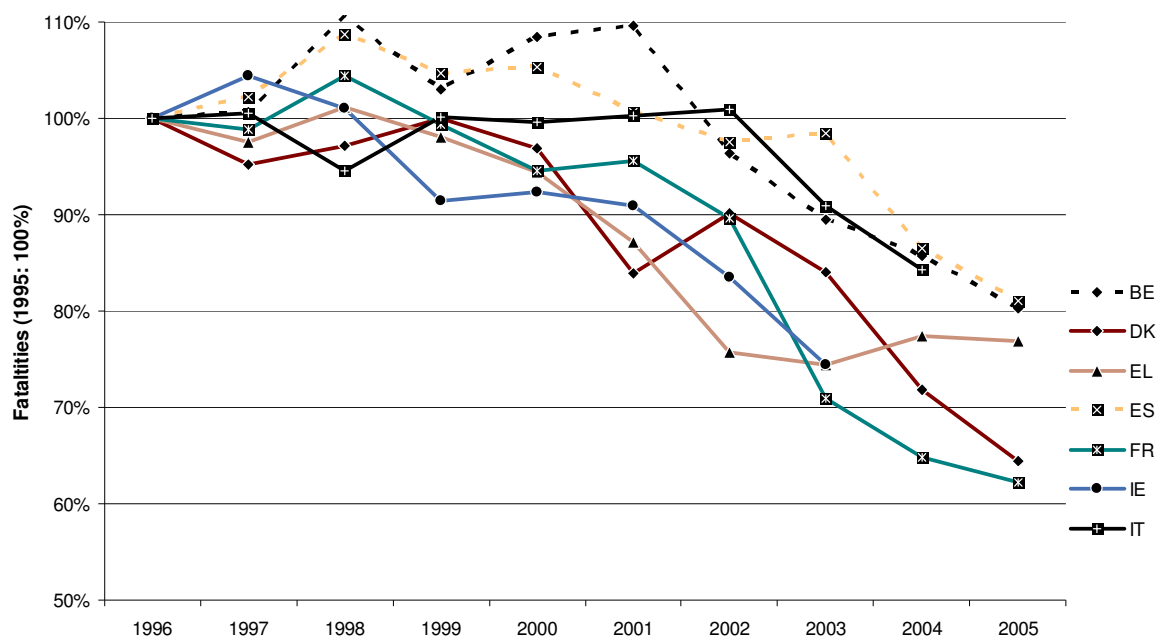
Source: CARE Database / EC

Date of query: 26-nov-2007

<sup>1</sup> Using latest data available, i.e. 2005 for all countries except LU (2002), IE and NL (2003), IT (2004).

<sup>2</sup> The data from EE, HU, MT and PL are not considered

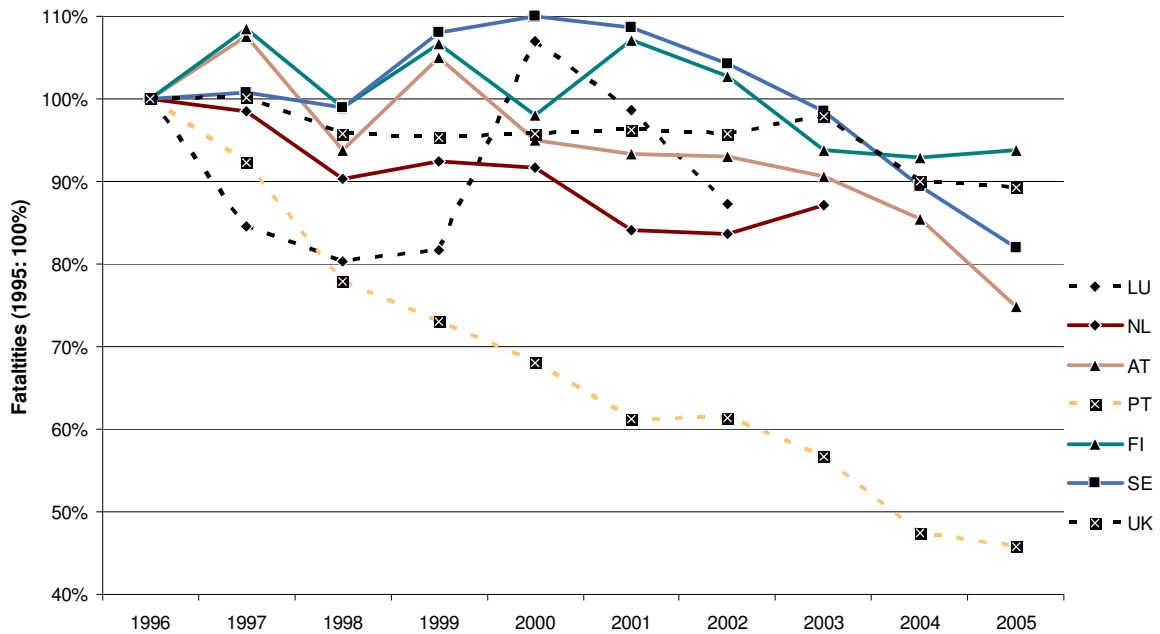
**Figure 11: Annual number of fatalities by country (BE-IT), 1996-2005**



Source: CARE database / EC

Date of query: 25-Nov-2007

Figure 12: Annual number of fatalities by country (LU-UK), 1996-2005



Source: CARE database / EC  
Date of query: 25-Nov-2007

Table 3: Annual number of fatal accidents\*\* by country, 1996-2005

	1996	1997	1998	1999	2000	2001	2002	2003	2004	2005
BE	1.237	1.255	1.345	1.299	1.356	1.378	1.217	1.142	1.096	997
DK	448	461	462	467	436	354	371	382	341	305
EE	-	-	-	-	-	-	-	-	-	150
EL	1.870	1.837	1.921	1.876	1.803	1.669	1.438	1.400	1.484	1.482
ES	4.042	4.062	4.319	4.239	4.372	4.170	4.031	4.084	3.643	3.377
FR	7.178	7.130	7.514	7.185	6.811	6.920	6.549	5.168	4.766	4.857
IE	415	424	408	373	362	360	346	301	-	-
IT	5.590	5.605	5.304	6.022	6.055	6.074	6.099	5.463	5.082	-
LU	67	57	56	53	68	65	52	-	-	-
HU	-	-	-	-	-	-	-	-	-	1.139
MT	-	-	-	-	-	-	-	-	-	12
NL	1.099	1.076	988	1.028	1.006	932	913	940	-	-
AT	933	1.005	865	947	889	861	873	848	818	712
PL	-	-	-	-	-	-	-	-	-	4.878
PT	1.880	1.732	1.647	1.582	1.450	1.316	1.323	1.222	1.024	988
FI	355	391	367	391	354	386	367	346	323	343
SE	488	493	490	516	535	511	490	460	430	406
UK	3.404	3.434	3.276	3.267	3.257	3.313	3.260	3.375	3.106	3.040
EU-14 <sup>2</sup>	29.006	28.962	28.962	29.245	28.754	28.309	27.329	25.183 <sup>1</sup>	23.406 <sup>1</sup>	22.882 <sup>1</sup>
Yearly Change		-0,2%	0,0%	1,0%	-1,7%	-1,5%	-3,5%	-7,9%	-7,1%	-2,2%

Source: CARE Database / EC  
Date of query: 26-nov-2007

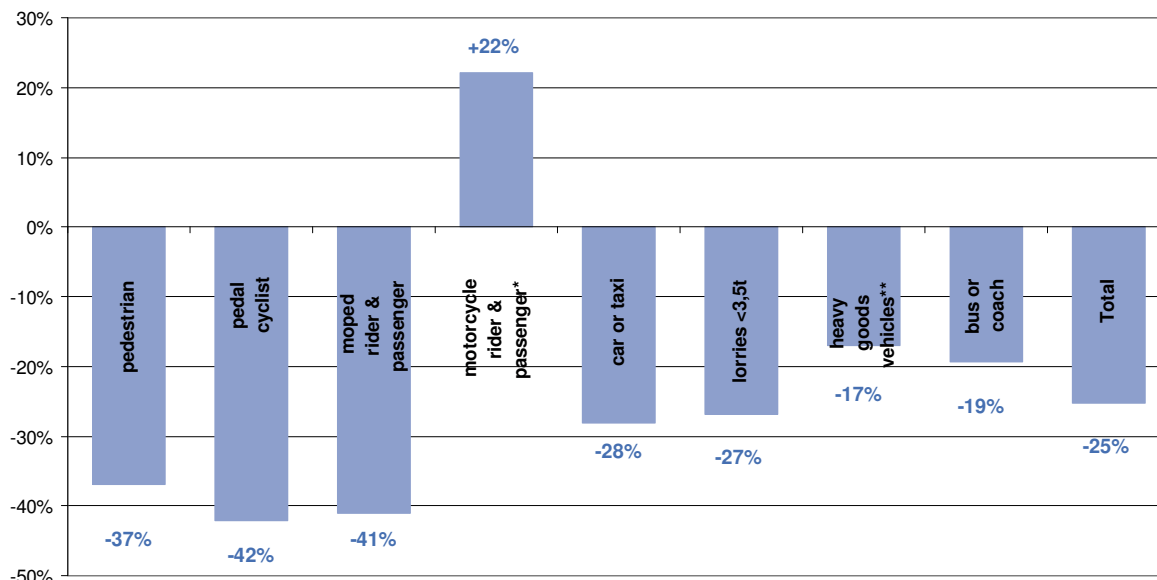
<sup>1</sup> Using latest data available, i.e. 2005 for all countries except LU (2002), IE and NL (2003), IT (2004).

<sup>2</sup> The data from EE, HU, MT and PL are not considered

\*\* Note that numbers have not been corrected for 30-day definition for EL, ES, FR, IT and PT

### 3.2 Time series related to mode of transport

Figure 13: Percentage change in number of fatalities by mode of transport in EU-14 (2005 compared to 1996)



Source: CARE Database/ EC  
Date of query: 25-oct-2006

\* motorcycles including mopeds (E and UK), \*\* heavy goods vehicles include lorries < 3,5t (IT and LU)

Table 4: Annual number of pedestrian fatalities by country, 1996-2005

	1996	1997	1998	1999	2000	2001	2002	2003	2004	2005
BE	154	142	162	154	142	158	127	113	101	108
DK	68	87	73	82	99	49	63	49	43	44
EE	-	-	-	-	-	-	-	-	-	46
EL	422	409	417	399	375	338	279	257	293	234
ES	960	967	996	906	899	846	776	786	683	680
FR	1.043	982	1.044	932	838	822	866	626	581	635
IE	115	130	114	92	85	89	86	64	-	-
IT	985	893	844	847	897	932	1.163	781	710	-
LU	9	8	3	2	11	11	6	-	-	-
HU	-	-	-	-	-	-	-	-	-	289
MT	-	-	-	-	-	-	-	-	-	6
NL	109	119	110	111	106	106	97	97	-	-
AT	157	156	165	182	140	117	160	132	132	97
PL	-	-	-	-	-	-	-	-	-	1.756
PT	624	549	406	393	384	337	339	280	233	214
FI	70	69	62	67	62	62	40	59	49	45
SE	74	72	69	86	73	87	58	55	67	50
UK	997	973	906	870	857	826	775	774	671	671
EU-14 <sup>2</sup>	5.787	5.556	5.371	5.123	4.968	4.780	4.835	4.079 <sup>1</sup>	3.730 <sup>1</sup>	3.655 <sup>1</sup>
Yearly Change		-4,0%	-3,3%	-4,6%	-3,0%	-3,8%	1,2%	-15,6%	-8,6%	-2,0%
Total - all users <sup>2</sup>	34.868	34.763	34.552	34.151	33.486	32.882	31.758	29.243 <sup>1</sup>	26.919 <sup>1</sup>	26.060 <sup>1</sup>
% pedestrians	16,6%	16,0%	15,5%	15,0%	14,8%	14,5%	15,2%	13,9%	13,9%	14,0%

Source: CARE Database / EC  
Date of query: 26-nov-2007

<sup>1</sup> Using latest data available, i.e. 2005 for all countries except LU (2002), IE and NL (2003), IT (2004).

<sup>2</sup> The data from EE, HU, MT and PL are not considered

**Table 5: Annual number of pedal cyclist fatalities by country (includes all riders and passengers of pedal cycles), 1996-2005**

	1996	1997	1998	1999	2000	2001	2002	2003	2004	2005
BE	121	122	135	122	134	130	105	110	79	71
DK	88	65	58	59	58	56	52	47	53	41
EE	-	-	-	-	-	-	-	-	-	7
EL	28	32	34	23	22	29	14	21	24	18
ES	101	116	114	119	84	100	96	78	88	82
FR	317	348	318	324	270	256	223	201	177	180
IE	22	24	21	14	10	12	18	10	-	-
IT	413	428	364	402	381	331	314	326	296	-
LU	1	1	1	0	1	1	1	-	-	-
HU	-	-	-	-	-	-	-	-	-	152
MT	-	-	-	-	-	-	-	-	-	0
NL	233	242	194	194	198	195	169	188	-	-
AT	73	66	57	68	62	55	80	56	58	47
PL	-	-	-	-	-	-	-	-	-	603
PT	75	75	74	41	56	50	58	63	47	48
FI	46	61	54	63	53	59	53	39	26	43
SE	49	42	58	45	47	43	42	35	27	38
UK	208	187	165	173	131	140	133	116	136	152
EU-14 <sup>2</sup>	1.775	1.809	1.647	1.647	1.507	1.457	1.358	1.291 <sup>1</sup>	1.210 <sup>1</sup>	1.215 <sup>1</sup>
Yearly Change		1,9%	-9,0%	0,0%	-8,5%	-3,3%	-6,8%	-4,9%	-6,3%	0,4%
Total - all users <sup>2</sup>	34.868	34.763	34.552	34.151	33.486	32.882	31.758	29.243 <sup>1</sup>	26.919 <sup>1</sup>	26.060 <sup>1</sup>
% pedal cyclists	5,1%	5,2%	4,8%	4,8%	4,5%	4,4%	4,3%	4,4%	4,5%	4,7%

Source: CARE Database / EC

Date of query: 26-nov-2007

<sup>1</sup> Using latest data available, i.e. 2005 for all countries except LU (2002), IE and NL (2003), IT (2004).<sup>2</sup> The data from EE, HU, MT and PL are not considered**Table 6: Annual number of moped rider & passenger fatalities by country, 1996-2005**

	1996	1997	1998	1999	2000	2001	2002	2003	2004	2005
BE	67	68	78	56	66	63	68	45	33	30
DK	26	27	39	41	47	43	38	43	46	29
EE	-	-	-	-	-	-	-	-	-	2
EL	122	114	114	108	90	77	55	53	55	58
ES	387	440	506	515	474	461	383	391	361	312
FR	505	498	442	492	456	450	387	393	339	356
IE*	-	-	-	-	-	-	-	-	-	-
IT	674	702	675	611	551	508	420	461	388	-
LU	0	1	1	0	0	0	0	-	-	-
HU	-	-	-	-	-	-	-	-	-	40
MT*	-	-	-	-	-	-	-	-	-	-
NL	107	88	89	107	107	78	98	94	-	-
AT	47	58	33	48	44	37	46	47	44	41
PL	-	-	-	-	-	-	-	-	-	53
PT	478	439	316	253	225	184	145	157	121	106
FI	17	16	16	8	9	7	7	12	14	4
SE	14	13	12	12	10	9	12	9	18	8
UK**	11	17	10	17	15	14	21	25	26	23
EU-14 <sup>2</sup>	2.455	2.481	2.331	2.268	2.094	1.931	1.680	1.730	1.539	1.449
Yearly Change		1,1%	-6,0%	-2,7%	-7,7%	-7,8%	-13,0%	3,0%	-11,0%	-5,8%
Total - all users <sup>2</sup>	34.868	34.763	34.552	34.151	33.486	32.882	31.758	29.243 <sup>1</sup>	26.919 <sup>1</sup>	26.060 <sup>1</sup>
% mopedists	7,0%	7,1%	6,7%	6,6%	6,3%	5,9%	5,3%	5,9%	5,7%	5,6%

Source: CARE Database / EC

Date of query: 27-nov-2007

<sup>1</sup> Using latest data available, i.e. 2005 for all countries except LU (2002), IE and NL (2003), IT (2004).<sup>2</sup> The data from EE, HU, MT and PL are not considered

\* Ireland and Malta do not separate Mopeds and Motorcycles; Moped riders are counted in the Motorcycle table (see Table 7).

\*\* Moped fatalities in the United Kingdom are underestimated because of scooters below 50cc being counted to motorcycles.



**Table 7: Annual number of motorcycle rider & passenger fatalities by country, 1996-2005**

	1996	1997	1998	1999	2000	2001	2002	2003	2004	2005
BE	107	125	121	142	118	147	158	124	120	123
DK	23	19	21	26	24	12	24	25	23	16
EE	-	-	-	-	-	-	-	-	-	5
EL	419	392	455	453	406	426	341	310	379	399
ES	457	459	421	387	392	370	401	367	399	472
FR	803	920	986	983	964	1.092	1.063	883	866	892
IE*	58	68	37	43	40	50	44	55	-	-
IT	519	520	516	569	728	807	869	980	1.070	-
LU	6	2	6	5	8	6	0	-	-	-
HU	-	-	-	-	-	-	-	-	-	100
MT*	-	-	-	-	-	-	-	-	-	3
NL	91	92	76	75	89	76	93	95	-	-
AT	84	111	87	103	112	107	89	109	98	98
PL	-	-	-	-	-	-	-	-	-	157
PT	255	241	241	253	212	229	225	213	181	188
FI	16	8	9	13	10	16	22	23	22	32
SE	40	36	40	36	39	38	37	47	56	46
UK**	429	492	488	530	590	569	589	669	560	546
EU-14 <sup>2</sup>	3.307	3.485	3.504	3.618	3.732	3.945	3.955	3.900 <sup>1</sup>	3.924 <sup>1</sup>	4.032 <sup>1</sup>
Yearly Change		5,4%	0,5%	3,3%	3,2%	5,7%	0,3%	-1,4%	0,6%	2,8%
Total - all users <sup>2</sup>	34.868	34.763	34.552	34.151	33.486	32.882	31.758	29.243 <sup>1</sup>	26.919 <sup>1</sup>	26.060 <sup>1</sup>
% motorcyclists	9,5%	10,0%	10,1%	10,6%	11,1%	12,0%	12,5%	13,3%	14,6%	15,5%

Source: CARE Database / EC  
Date of query: 27-nov-2007

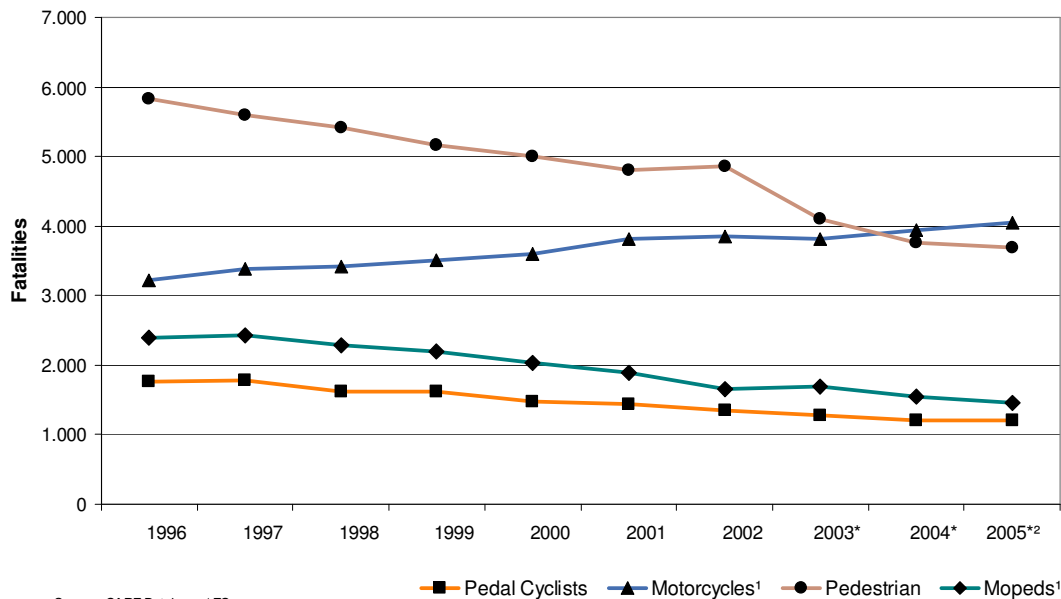
<sup>1</sup> Using latest data available, i.e. 2005 for all countries except LU (2002), IE and NL (2003), IT (2004).

<sup>2</sup> The data from EE, HU, MT and PL are not considered

\* Ireland and Malta do not separate Mopeds and Motorcycles; Moped riders are counted as "Motorcyclists".

\*\* In the United Kingdom scooters below 50cc are counted to motorcycles.

**Figure 14: Annual number of fatalities by mode of transport (in which the fatality was travelling, includes driver & passenger), EU-14, 1996-2005**



Source: CARE Database / EC  
Date of query: 30-oct-2007

<sup>1</sup> Data of the last available year were used when calculating EU-14 totals for IE (2003), LU (2002), NL (2003) and IT (2004)

<sup>2</sup> IE and UK: motorcycles including mopeds (motorcycles and mopeds are not counted separately)

**Table 8: Annual number of fatalities in accidents involving cars or taxis by country (Attention: fatalities in cars or taxis plus all opponents fatalities), 1996-2005**

	1996	1997	1998	1999	2000	2001	2002	2003	2004	2005
BE	1.134	1.127	1.244	1.134	1.219	1.223	1.075	925	825	827
DK	393	363	385	386	360	334	342	314	262	248
EE	-	-	-	-	-	-	-	-	-	131
EL	1.367	1.365	1.424	1.387	1.376	1.248	1.144	1.108	1.168	1.155
ES	4.247	4.306	4.632	4.458	4.527	4.328	4.244	4.363	3.659	3.369
FR	7.284	7.128	7.588	7.236	6.906	6.890	6.445	4.981	4.526	4.310
IE	328	341	344	325	352	318	294	246	-	-
IT	5.519	5.562	5.218	5.471	5.424	5.442	5.475	4.743	4.392	-
LU*	61	53	49	53	67	63	58	-	-	-
HU	-	-	-	-	-	-	-	-	-	987
MT	-	-	-	-	-	-	-	-	-	8
NL	864	855	803	769	764	707	721	697	-	-
AT	852	882	766	855	724	731	749	713	677	593
PL	-	-	-	-	-	-	-	-	-	4.366
PT	1.829	1.785	1.570	1.313	1.212	1.034	1.104	999	833	767
FI	306	332	317	324	302	331	320	282	274	302
SE	425	444	424	481	480	467	463	429	392	348
UK	3.068	3.105	2.950	2.911	2.874	2.863	2.889	2.946	2.737	2.739
EU-14 <sup>2</sup>	27.677	27.648	27.714	27.103	26.587	25.979	25.323	22.804 <sup>1</sup>	20.746 <sup>1</sup>	20.051 <sup>1</sup>
Yearly Change		-0,1%	0,2%	-2,2%	-1,9%	-2,3%	-2,5%	-9,9%	-9,0%	-3,4%
Total - all users <sup>2</sup>	34.868	34.763	34.552	34.151	33.486	32.882	31.758	29.243 <sup>1</sup>	26.919 <sup>1</sup>	26.060 <sup>1</sup>
% car or taxi	79,4%	79,5%	80,2%	79,4%	79,4%	79,0%	79,7%	78,0%	77,1%	76,9%

Source: CARE Database / EC

Date of query: 27-nov-2007

<sup>1</sup> Using latest data available, i.e. 2005 for all countries except LU (2002), IE and NL (2003), IT (2004).<sup>2</sup> The data from EE, HU, MT and PL are not considered

\* Including data on lorries &lt;3,5t

**Table 9: Annual number of fatalities in accidents involving heavy goods vehicles >3,5t by country (Attention: fatalities in heavy goods vehicles plus all opponents fatalities), 1996-2005**

	1996	1997	1998	1999	2000	2001	2002	2003	2004	2005
BE	192	195	228	193	204	193	178	136	143	161
DK	102	93	88	86	97	78	80	69	65	79
EE	-	-	-	-	-	-	-	-	-	50
EL	245	242	277	268	205	220	219	217	181	158
ES	839	888	959	905	920	803	860	834	766	714
FR	1.155	1.113	1.164	1.090	1.051	1.057	988	758	727	726
IE	54	85	63	61	67	70	42	54	-	-
IT	484	476	421	562	582	411	359	358	336	-
LU	8	6	7	3	5	6	12	-	-	-
HU	-	-	-	-	-	-	-	-	-	251
MT	-	-	-	-	-	-	-	-	-	0
NL	209	177	140	175	168	169	129	158	-	-
AT	136	150	145	177	143	122	143	140	144	126
PL*	-	-	-	-	-	-	-	-	-	1.425
PT	365	356	219	296	284	197	214	213	187	163
FI	91	112	88	121	77	118	105	97	107	92
SE	100	97	117	93	119	118	135	92	59	61
UK	605	554	605	641	581	607	561	548	478	510
EU-14 <sup>2</sup>	4.585	4.544	4.521	4.671	4.503	4.169	4.025	3.686 <sup>1</sup>	3.417 <sup>1</sup>	3.350 <sup>1</sup>
Yearly Change		-0,9%	-0,5%	3,3%	-3,6%	-7,4%	-3,5%	-8,4%	-7,3%	-2,0%
Total - all users <sup>2</sup>	34.868	34.763	34.552	34.151	33.486	32.882	31.758	29.243 <sup>1</sup>	26.919 <sup>1</sup>	26.060 <sup>1</sup>
% HGV	13,1%	13,1%	13,1%	13,7%	13,4%	12,7%	12,7%	12,6%	12,7%	12,9%

Source: CARE Database / EC

Date of query: 27-nov-2007

<sup>1</sup> Using latest data available, i.e. 2005 for all countries except LU (2002), IE and NL (2003), IT (2004).<sup>2</sup> The data from EE, HU, MT and PL are not considered

\* Data on lorries &lt;3,5t included in HGV

**Table 10: Annual number of fatalities in accidents involving lorries <3,5t by country  
(Attention: fatalities in lorries <3,5t plus all opponents fatalities), 1996-2005**

	1996	1997	1998	1999	2000	2001	2002	2003	2004	2005
BE	93	92	98	122	128	116	113	78	83	97
DK	84	87	89	93	75	75	72	79	43	53
EE	-	-	-	-	-	-	-	-	-	0
EL	441	342	301	289	330	261	245	223	220	219
ES	742	839	846	783	776	796	783	746	706	644
FR	460	433	482	479	324	369	353	304	234	203
IE	59	53	63	40	50	55	48	43	-	-
IT	437	407	361	468	360	476	428	337	286	-
LU*	-	-	-	-	-	-	-	-	-	-
HU	-	-	-	-	-	-	-	-	-	141
MT	-	-	-	-	-	-	-	-	-	8
NL	146	152	117	147	135	136	121	169	-	-
AT	50	57	55	52	62	67	69	68	56	52
PL**	-	-	-	-	-	-	-	-	-	-
PT	576	371	195	422	389	407	365	357	275	286
FI	45	58	29	39	47	29	36	45	33	33
SE	41	39	27	30	45	38	32	25	19	25
UK	329	306	310	284	314	332	323	335	297	288
EU-14 <sup>2</sup>	3.503	3.236	2.973	3.248	3.035	3.157	2.988	2.809 <sup>1</sup>	2.464 <sup>1</sup>	2.398 <sup>1</sup>
Yearly Change		-7,6%	-8,1%	9,2%	-6,6%	4,0%	-5,4%	-6,0%	-12,3%	-2,7%
Total - all users <sup>2</sup>	34.868	34.763	34.552	34.151	33.486	32.882	31.758	29.243 <sup>1</sup>	26.919 <sup>1</sup>	26.060 <sup>1</sup>
% lorries < 3.5t	10,0%	9,3%	8,6%	9,5%	9,1%	9,6%	9,4%	9,6%	9,2%	9,2%

Source: CARE Database / EC  
Date of query: 27-nov-2007

<sup>1</sup> Using latest data available, i.e. 2005 for all countries except LU (2002), IE and NL (2003), IT (2004).

<sup>2</sup> The data from EE, HU, MT and PL are not considered

\* Data on lorries <3,5t included in car or taxi (see Table 8)

\*\* Data on lorries <3,5t included in HGV (see Table 9)

**Table 11: Annual number of fatalities by country in accidents involving buses or coaches  
(Attention: fatalities in buses plus all opponents fatalities), 1996-2005**

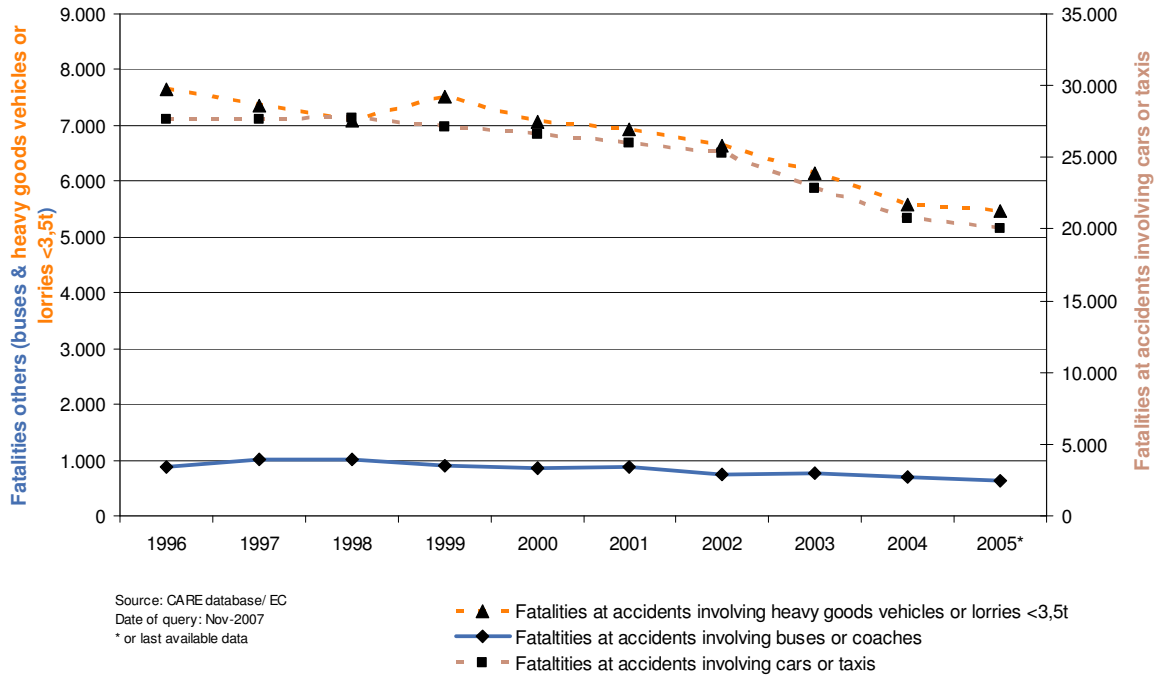
	1996	1997	1998	1999	2000	2001	2002	2003	2004	2005
BE	37	37	47	23	28	29	31	29	31	19
DK	24	15	11	25	14	14	22	26	15	11
EE	-	-	-	-	-	-	-	-	-	7
EL	66	79	93	79	71	59	60	94	48	53
ES	154	180	184	163	144	135	109	126	80	108
FR	109	188	127	127	144	117	109	97	99	91
IE	15	11	16	14	12	9	8	2	-	-
IT	121	137	105	131	119	113	105	122	125	-
LU	5	3	0	0	4	6	4	-	-	-
HU	-	-	-	-	-	-	-	-	-	62
MT	-	-	-	-	-	-	-	-	-	1
NL	23	29	29	21	23	27	21	21	-	-
AT	18	25	14	41	36	33	17	20	24	10
PL	-	-	-	-	-	-	-	-	-	252
PT	86	104	145	58	57	66	51	26	41	23
FI	12	20	22	18	18	28	17	13	29	13
SE	35	15	16	23	16	32	29	33	16	13
UK	184	174	198	182	176	215	165	160	154	140
EU-14 <sup>2</sup>	889	1.017	1.007	905	862	883	748	773 <sup>1</sup>	689 <sup>1</sup>	633 <sup>1</sup>
Yearly Change		14,4%	-1,0%	-10,1%	-4,8%	2,4%	-15,3%	3,3%	-10,9%	-8,1%
Total - all users <sup>2</sup>	34.868	34.763	34.552	34.151	33.486	32.882	31.758	29.243 <sup>1</sup>	26.919 <sup>1</sup>	26.060 <sup>1</sup>
% buses	2,5%	2,9%	2,9%	2,6%	2,6%	2,7%	2,4%	2,6%	2,6%	2,4%

Source: CARE Database / EC  
Date of query: 27-nov-2007

<sup>1</sup> Using latest data available, i.e. 2005 for all countries except LU (2002), IE and NL (2003), IT (2004).

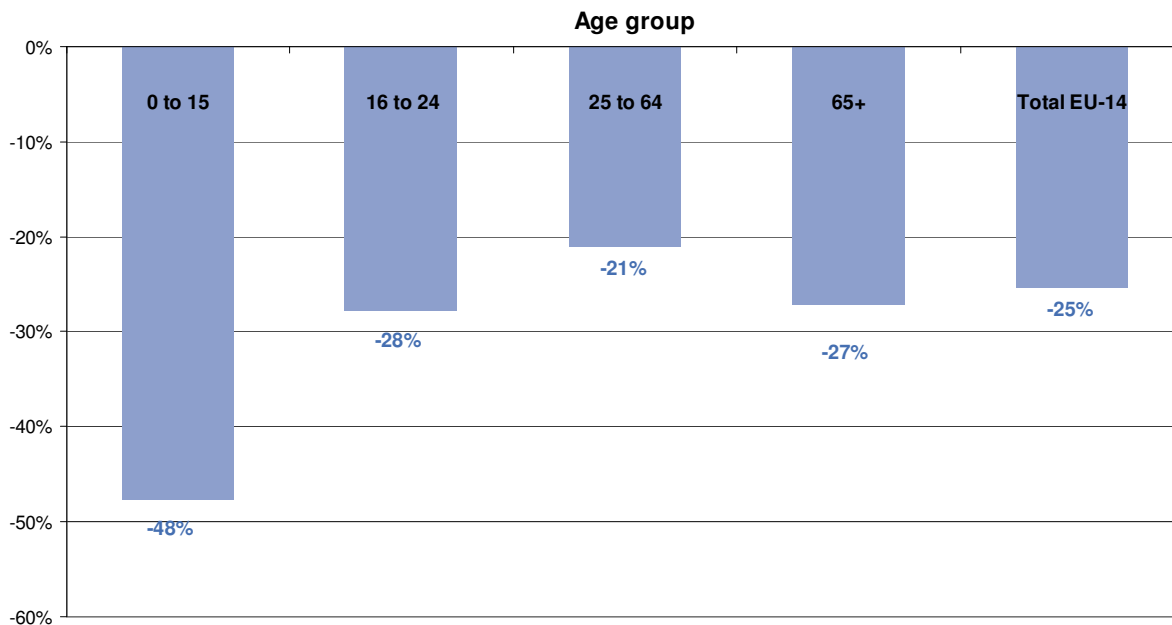
<sup>2</sup> The data from EE, HU, MT and PL are not considered

**Figure 15: Annual number of fatalities involving different modes of transport, EU-14  
(Attention: fatalities in specific mode of transport plus all opponents fatalities), 1996-2005**



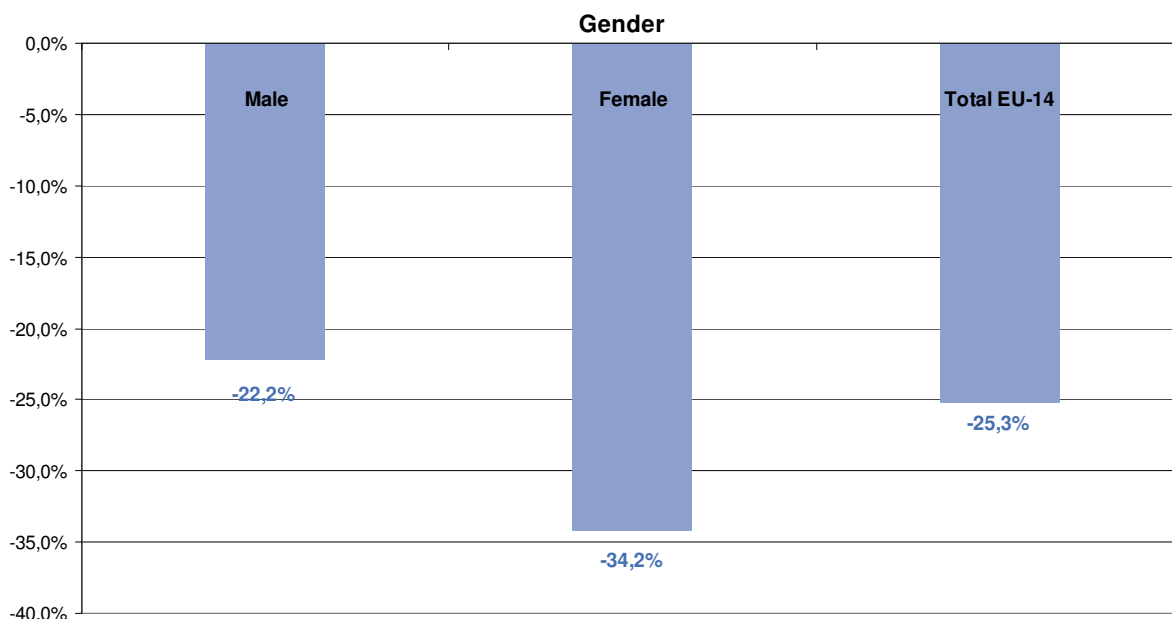
### 3.3 Time series related to person age and gender

Figure 16: Percentage change in number of fatalities by person age group (EU-14), 2005\* compared to 1996



Source: CARE Database/ EC  
Date of query: 25-Nov-2007

Figure 17: Increase / decrease of number of fatalities by gender (EU-14), 2005\* compared to 1996



Source: CARE Database/ EC  
Date of query: 25-Nov-2007

\* IT : 2004, IE & NL: 2003, LU: 2002

**Table 12: Annual number of fatalities by age group by country, 1996-2001**

	1996				1997				1998			
	0 to 15	16 to 24	25 to 64	65+	0 to 15	16 to 24	25 to 64	65+	0 to 15	16 to 24	25 to 64	65+
BE	63	305	712	267	61	295	761	237	99	334	795	260
DK	45	114	226	129	28	113	216	132	22	99	255	123
EE	-	-	-	-	-	-	-	-	-	-	-	-
EL	85	486	1.127	437	84	466	1.127	406	74	466	1.167	445
ES	236	1.203	3.068	855	223	1.239	3.107	900	260	1.365	3.334	890
FR	469	1.995	4.489	1.578	493	2.085	4.361	1.494	455	2.198	4.671	1.587
IE	31	124	197	61	34	127	202	66	40	138	189	80
IT	240	1.428	3.277	1.435	217	1.300	3.381	1.548	189	1.231	3.218	1.379
LU	2	15	46	3	3	17	28	9	2	8	39	7
HU	-	-	-	-	-	-	-	-	-	-	-	-
MT	-	-	-	-	-	-	-	-	-	-	-	-
NL	86	271	550	273	79	246	572	266	56	254	529	227
AT	57	261	513	195	43	298	552	212	48	205	502	208
PL	-	-	-	-	-	-	-	-	-	-	-	-
PT	139	633	1.447	485	139	580	1.331	441	152	519	1.086	365
FI	40	87	175	102	36	72	207	123	24	72	200	104
SE	29	89	238	181	32	73	265	171	33	84	266	148
UK	285	890	1.760	781	268	903	1.784	788	224	787	1.797	771
EU-14 <sup>2</sup>	1.808	7.901	17.825	6.782	1.739	7.815	17.894	6.792	1.677	7.759	18.049	6.593
% by age group	5,2%	22,7%	51,1%	19,5%	5,0%	22,5%	51,5%	19,5%	4,9%	22,5%	52,2%	19,1%

From 551/ 523 / 474 fatalities the age is unknown

	1999				2000				2001			
	0 to 15	16 to 24	25 to 64	65+	0 to 15	16 to 24	25 to 64	65+	0 to 15	16 to 24	25 to 64	65+
BE	72	319	769	233	67	368	784	238	71	319	824	264
DK	43	111	243	117	31	109	224	134	29	83	217	102
EE	-	-	-	-	-	-	-	-	-	-	-	-
EL	66	475	1.132	415	54	421	1.107	428	56	427	981	385
ES	258	1.255	3.187	910	228	1.253	3.270	849	208	1.123	3.165	867
FR	421	2.172	4.396	1.443	414	1.933	4.221	1.370	347	2.058	4.276	1.393
IE	26	114	188	71	24	138	195	44	33	126	197	47
IT	193	1.281	3.521	1.391	165	1.309	3.471	1.365	199	1.194	3.526	1.276
LU	2	12	37	7	3	17	45	10	6	18	39	7
HU	-	-	-	-	-	-	-	-	-	-	-	-
MT	-	-	-	-	-	-	-	-	-	-	-	-
NL	82	247	519	242	66	271	510	235	61	205	505	222
AT	51	254	549	225	35	233	518	190	34	212	526	186
PL	-	-	-	-	-	-	-	-	-	-	-	-
PT	96	477	1.064	340	89	393	1.013	342	65	375	868	320
FI	33	72	230	96	23	64	203	106	24	99	214	96
SE	44	82	281	173	24	113	300	154	25	115	296	147
UK	239	783	1.765	758	204	782	1.908	679	229	859	1.826	652
EU-14 <sup>2</sup>	1.625	7.654	17.881	6.420	1.427	7.405	17.769	6.144	1.387	7.213	17.459	5.965
% by age group	4,8%	22,5%	52,5%	18,9%	4,3%	22,2%	53,3%	18,4%	4,2%	22,0%	53,3%	18,2%

Source: CARE Database / EC

Date of query: 28-nov-2007

<sup>1</sup> Using latest data available, i.e. 2005 for all countries except LU (2002), IE and NL (2003), IT (2004).<sup>2</sup> The data from EE, HU, MT and PL are not considered

From 474 / 571 / 742 fatalities the age is unknown

**Table 13: Annual number of fatalities by age group by country, 2002-2005**

	2002				2003				2004			
	0 to 15	16 to 24	25 to 64	65+	0 to 15	16 to 24	25 to 64	65+	0 to 15	16 to 24	25 to 64	65+
BE	45	300	739	210	37	275	650	240	35	263	659	201
DK	16	100	244	103	25	80	228	99	22	75	192	80
EE	-	-	-	-	-	-	-	-	-	-	-	-
EL	51	326	898	340	59	364	840	322	62	343	928	317
ES	189	1.069	3.106	835	189	1.128	3.102	817	162	927	2.787	746
FR	288	1.855	4.061	1.361	244	1.483	3.123	1.120	209	1.440	2.906	962
IE	23	93	180	60	17	93	166	53	-	-	-	-
IT	228	1.216	3.554	1.394	173	1.067	3.275	1.266	159	1.032	3.027	1.165
LU	3	13	41	5	-	-	-	-	-	-	-	-
HU	-	-	-	-	-	-	-	-	-	-	-	-
MT	-	-	-	-	-	-	-	-	-	-	-	-
NL	55	249	469	213	71	226	510	221	-	-	-	-
AT	33	207	505	211	45	207	481	197	30	198	471	177
PL	-	-	-	-	-	-	-	-	-	-	-	-
PT	72	315	960	304	63	268	887	304	55	245	747	230
FI	20	86	210	99	24	69	190	96	15	93	170	97
SE	27	111	283	139	28	109	274	118	24	87	230	139
UK	192	887	1.816	655	186	932	1.865	658	177	897	1.687	589
EU-14 <sup>2</sup>	1.241	6.827	17.066	5.929	1.164 <sup>1</sup>	6.314 <sup>1</sup>	15.632 <sup>1</sup>	5.517 <sup>1</sup>	1.041 <sup>1</sup>	5.932 <sup>1</sup>	14.520 <sup>1</sup>	4.982 <sup>1</sup>
% by age group	3,9%	21,5%	53,7%	18,7%	4,0%	21,6%	53,5%	18,9%	3,9%	22,0%	53,9%	18,5%

From 694 / 615 / 444 fatalities the age is unknown

	2005			
	0 to 15	16 to 24	25 to 64	65+
BE	39	225	633	186
DK	15	70	176	70
EE	13	30	105	20
EL	49	359	906	322
ES	149	843	2.656	719
FR	168	1.386	2.730	1.014
IE	-	-	-	-
IT	-	-	-	-
LU	-	-	-	-
HU	43	176	843	206
MT	3	8	3	3
NL	-	-	-	-
AT	35	178	404	151
PL	198	1.050	3.130	931
PT	39	249	725	222
FI	26	64	198	91
SE	19	77	237	104
UK	156	891	1.664	616
EU-14 <sup>2</sup>	945 <sup>1</sup>	5.705 <sup>1</sup>	14.073 <sup>1</sup>	4.939 <sup>1</sup>
% by age group	3,6%	21,9%	54,0%	19,0%

Source: CARE Database / EC

Date of query: 28-nov-2007

<sup>1</sup> Using latest data available, i.e. 2005 for all countries except LU (2002), IE and NL (2003), IT (2004).

<sup>2</sup> The data from EE, HU, MT and PL are not considered

From 399 fatalities the age is unknown

Figure 18: Annual number of fatalities by year and age, EU-14 (1996 and 2005\*)

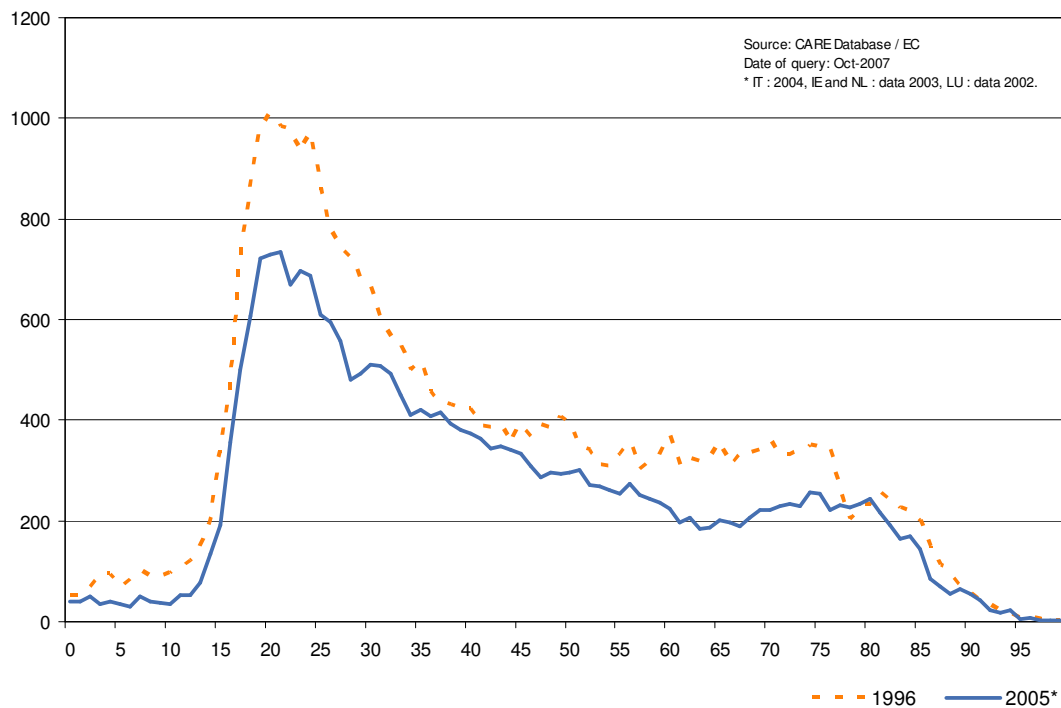


Table 14: Annual number of female fatalities by country, 1996-2005

	1996	1997	1998	1999	2000	2001	2002	2003	2004	2005
BE	336	345	419	376	367	384	341	299	250	260
DK	144	122	142	142	151	117	119	122	98	80
EE	-	-	-	-	-	-	-	-	-	41
EL	508	449	477	453	440	416	351	289	364	355
ES	1.335	1.345	1.478	1.409	1.338	1.325	1.263	1.246	1.124	958
FR	2.380	2.245	2.477	2.329	1.951	2.057	1.869	1.435	1.349	1.314
IE	108	131	115	118	104	103	101	79	-	-
IT	1.628	1.567	1.481	1.496	1.531	1.667	1.531	1.284	1.133	-
LU	15	19	8	16	17	17	12	-	-	-
HU	-	-	-	-	-	-	-	-	-	308
MT	-	-	-	-	-	-	-	-	-	4
NL	342	336	294	282	294	246	246	262	-	-
AT	289	288	269	320	246	251	276	251	215	195
PL	-	-	-	-	-	-	-	-	-	1.243
PT	568	508	392	390	347	363	348	302	264	233
FI	126	150	111	131	133	137	114	107	118	96
SE	161	136	121	158	153	149	137	138	116	113
UK	1.030	1.030	1.026	958	914	864	915	920	829	816
EU-14 <sup>2</sup>	8.971	8.672	8.810	8.578	7.985	8.095	7.622	6.747 <sup>1</sup>	6.213 <sup>1</sup>	5.906 <sup>1</sup>
Yearly Change		-3,3%	1,6%	-2,6%	-6,9%	1,4%	-5,8%	-11,5%	-7,9%	-4,9%
Total - all users <sup>2</sup>	34.868	34.763	34.552	34.151	33.486	32.882	31.758	29.243 <sup>1</sup>	26.919 <sup>1</sup>	26.060 <sup>1</sup>
% female	25,7%	24,9%	25,5%	25,1%	23,8%	24,6%	24,0%	23,1%	23,1%	22,7%

Source: CARE Database / EC  
Date of query: 28-nov-2007

<sup>1</sup> Using latest data available, i.e. 2005 for all countries except LU (2002), IE and NL (2003), IT (2004).

<sup>2</sup> The data from EE, HU, MT and PL are not considered

From 1018 out of 317048 fatalities the gender is unknown (0,3%).

\* IT: 2004, IE & NL: 2003, LU: 2002



**Table 15: Annual number of male fatalities by country, 1996-2005**

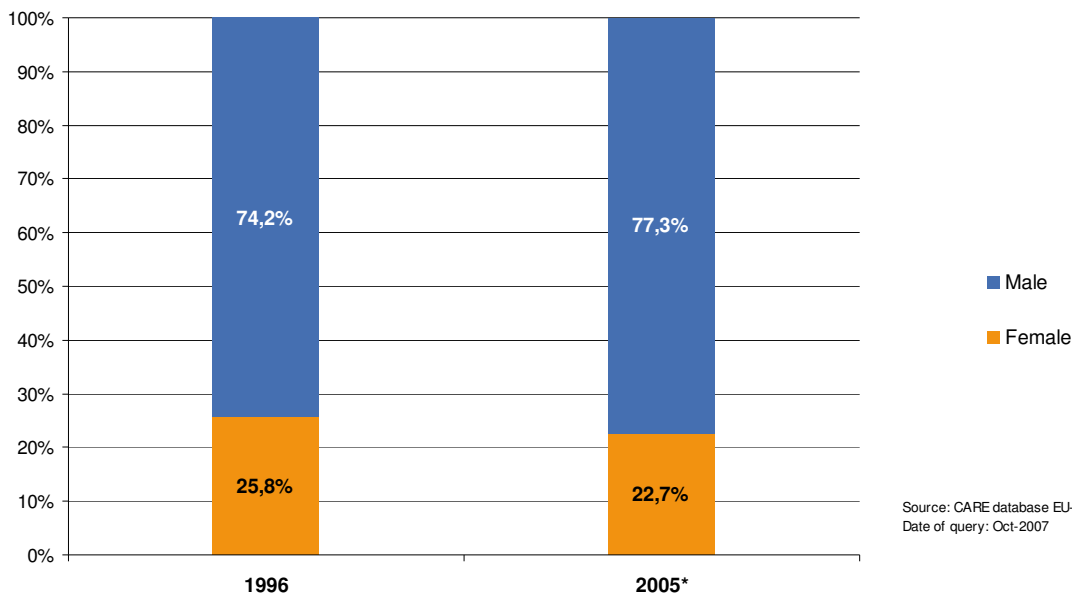
	1996	1997	1998	1999	2000	2001	2002	2003	2004	2005
BE	1.020	1.018	1.080	1.021	1.102	1.102	962	911	908	823
DK	370	367	357	372	347	314	344	310	271	251
EE	-	-	-	-	-	-	-	-	-	126
EL	1.639	1.647	1.688	1.653	1.590	1.458	1.277	1.313	1.303	1.296
ES	4.079	4.178	4.421	4.263	4.323	4.123	4.008	4.062	3.551	3.446
FR	6.160	6.199	6.441	6.158	6.127	6.103	5.786	4.622	4.181	4.004
IE	342	335	339	287	302	304	260	246	-	-
IT	5.048	5.145	4.833	5.192	5.118	5.024	5.208	4.781	4.492	-
LU	56	41	49	42	59	52	50	-	-	-
HU	-	-	-	-	-	-	-	-	-	963
MT	-	-	-	-	-	-	-	-	-	13
NL	838	827	768	802	784	743	734	758	-	-
AT	738	817	694	759	730	707	680	680	663	573
PL	-	-	-	-	-	-	-	-	-	4.175
PT	2.152	2.011	1.734	1.599	1.504	1.306	1.326	1.244	1.028	1.005
FI	278	288	289	300	263	296	301	272	257	283
SE	376	404	410	422	438	433	423	391	364	324
UK	2.710	2.713	2.555	2.604	2.666	2.728	2.662	2.738	2.539	2.520
EU-14 <sup>2</sup>	25.806	25.991	25.658	25.474	25.353	24.694	24.020	22.378 <sup>1</sup>	20.612 <sup>1</sup>	20.072 <sup>1</sup>
Yearly Change		0,7%	-1,3%	-0,7%	-0,5%	-2,6%	-2,7%	-6,8%	-7,9%	-2,6%
Total - all users <sup>2</sup>	34.868	34.763	34.552	34.151	33.486	32.882	31.758	29.243 <sup>1</sup>	26.919 <sup>1</sup>	26.060 <sup>1</sup>
% male	74,0%	74,8%	74,3%	74,6%	75,7%	75,1%	75,6%	76,5%	76,6%	77,0%

Source: CARE Database / EC  
Date of query: 28-nov-2007

<sup>1</sup> Using latest data available, i.e. 2005 for all countries except LU (2002), IE and NL (2003), IT (2004).

<sup>2</sup> The data from EE, HU, MT and PL are not considered  
From 10 18 out of 317048 fatalities the gender is unknown (0,3%).

**Figure 19: Annual distribution of fatalities by gender, EU-14 (1996 and 2005\*)**



Source: CARE database EU-13  
Date of query: Oct-2007

\* IT: 2004, IE & NL: 2003, LU: 2002

**Table 16: Annual number of female fatalities by country, drivers (1996-2005)**

	1996	1997	1998	1999	2000	2001	2002	2003	2004	2005
BE	163	169	190	182	184	188	155	153	138	136
DK	65	66	76	69	66	56	60	57	55	38
EE	-	-	-	-	-	-	-	-	-	8
EL	73	60	77	69	70	65	56	50	65	65
ES	256	282	311	332	303	333	330	337	295	242
FR	983	962	1.016	1.012	880	970	842	642	655	586
IE	41	36	30	43	38	33	35	26	-	-
IT	537	515	508	490	510	635	442	423	377	-
LU	9	8	3	10	6	4	6	-	-	-
HU	-	-	-	-	-	-	-	-	-	88
MT	-	-	-	-	-	-	-	-	-	0
NL	206	191	167	171	184	148	142	151	-	-
AT	112	111	89	129	100	112	105	115	94	96
PL	-	-	-	-	-	-	-	-	-	250
PT	86	88	63	80	86	70	83	70	56	67
FI	51	59	55	69	53	63	49	40	44	43
SE	67	54	53	54	67	52	56	63	41	51
UK	311	326	334	315	286	305	299	343	317	288
EU-14 <sup>2</sup>	2.960	2.927	2.971	3.024	2.833	3.034	2.661	2.475 <sup>1</sup>	2.321 <sup>1</sup>	2.172 <sup>1</sup>
Yearly Change		-1,1%	1,5%	1,8%	-6,3%	7,1%	-12,3%	-7,0%	-6,2%	-6,4%
Total - all users <sup>2</sup>	34.868	34.763	34.552	34.151	33.486	32.882	31.758	29.243 <sup>1</sup>	26.919 <sup>1</sup>	26.060 <sup>1</sup>
% female drivers	8,5%	8,4%	8,6%	8,9%	8,5%	9,2%	8,4%	8,5%	8,6%	8,3%

Source: CARE Database / EC

Date of query: 27-nov-2007

<sup>1</sup>Using latest data available, i.e. 2005 for all countries except LU (2002), IE and NL (2003), IT (2004).<sup>2</sup>The data from EE, HU, MT and PL are not considered

From 1249 out of 317047 fatalities the Gender or Person Class is unknown (0,4%)

**Table 17: Annual number of male fatalities by country, drivers (1996-2005)**

	1996	1997	1998	1999	2000	2001	2002	2003	2004	2005
BE	796	821	849	824	883	866	804	775	765	671
DK	274	265	268	270	229	243	250	243	214	195
EE	-	-	-	-	-	-	-	-	-	73
EL	1.133	1.137	1.181	1.157	1.122	1.064	921	958	951	986
ES	2.746	2.859	3.077	2.988	3.007	2.864	2.789	2.834	2.552	2.486
FR	4.547	4.600	4.854	4.684	4.613	4.651	4.398	3.586	3.237	3.113
IE	206	191	203	184	189	182	166	166	-	-
IT	3.633	3.827	3.621	3.921	3.769	3.621	3.690	3.541	3.362	-
LU	38	31	42	35	45	40	35	-	-	-
HU	-	-	-	-	-	-	-	-	-	607
MT	-	-	-	-	-	-	-	-	-	5
NL	678	676	612	626	609	600	587	616	-	-
AT	545	626	518	536	561	547	519	509	512	448
PL	-	-	-	-	-	-	-	-	-	2.216
PT	1.392	1.346	1.157	1.080	954	885	865	884	715	693
FI	199	217	200	214	205	219	231	207	181	217
SE	280	311	326	322	331	318	322	297	271	248
UK	1.632	1.679	1.604	1.635	1.716	1.739	1.751	1.806	1.684	1.714
EU-14 <sup>2</sup>	18.099	18.585	18.512	18.475	18.233	17.839	17.328	16.457 <sup>1</sup>	15.260 <sup>1</sup>	14.950 <sup>1</sup>
Yearly Change		2,7%	-0,4%	-0,2%	-1,3%	-2,2%	-2,9%	-5,0%	-7,3%	-2,0%
Total - all users <sup>2</sup>	34.868	34.763	34.552	34.151	33.486	32.882	31.758	29.243 <sup>1</sup>	26.919 <sup>1</sup>	26.060 <sup>1</sup>
% male drivers	51,9%	53,5%	53,6%	54,1%	54,5%	54,3%	54,6%	56,3%	56,7%	57,4%

Source: CARE Database / EC

Date of query: 27-nov-2007

<sup>1</sup>Using latest data available, i.e. 2005 for all countries except LU (2002), IE and NL (2003), IT (2004).<sup>2</sup>The data from EE, HU, MT and PL are not considered

From 1249 out of 317047 fatalities the Gender or Person Class is unknown (0,4%)

**Table 18: Annual number of female fatalities by country, passengers (1996-2005)**

	1996	1997	1998	1999	2000	2001	2002	2003	2004	2005
BE	113	122	152	126	117	128	127	88	73	81
DK	51	29	36	46	42	38	40	48	29	28
EE	-	-	-	-	-	-	-	-	-	20
EL	278	243	232	225	236	208	193	150	172	197
ES	746	717	810	741	738	706	684	658	589	473
FR	1.006	896	1.065	948	786	794	680	538	466	462
IE	29	54	49	36	36	41	37	31	-	-
IT	641	672	637	666	655	691	659	613	533	-
LU	6	7	4	6	6	10	4	-	-	-
HU	-	-	-	-	-	-	-	-	-	127
MT	-	-	-	-	-	-	-	-	-	0
NL	86	89	76	80	76	61	63	72	-	-
AT	113	110	96	112	72	90	96	79	65	57
PL	-	-	-	-	-	-	-	-	-	486
PT	272	225	187	176	150	172	156	137	120	103
FI	36	48	33	41	45	48	43	42	49	37
SE	58	53	45	65	50	68	55	52	49	41
UK	352	345	338	343	321	291	333	301	284	270
EU-14 <sup>2</sup>	3.787	3.610	3.761	3.610	3.331	3.346	3.170	2.813 <sup>1</sup>	2.536 <sup>1</sup>	2.389 <sup>1</sup>
Yearly Change		-4,7%	4,2%	-4,0%	-7,7%	0,5%	-5,3%	-11,3%	-9,8%	-5,8%
Total - all users <sup>2</sup>	34.868	34.763	34.552	34.151	33.486	32.882	31.758	29.243 <sup>1</sup>	26.919 <sup>1</sup>	26.060 <sup>1</sup>
% female passengers	10,9%	10,4%	10,9%	10,6%	9,9%	10,2%	10,0%	9,6%	9,4%	9,2%

Source: CARE Database / EC

Date of query: 27-nov-2007

<sup>1</sup> Using latest data available, i.e. 2005 for all countries except LU (2002), IE and NL (2003), IT (2004).<sup>2</sup> The data from EE, HU, MT and PL are not considered

From 1249 out of 3 17047 fatalities the Gender or Person Class is unknown (0,4%)

**Table 19: Annual number of male fatalities by country, passengers (1996-2005)**

	1996	1997	1998	1999	2000	2001	2002	2003	2004	2005
BE	129	109	145	111	142	146	89	81	81	88
DK	56	42	46	47	62	44	50	33	28	25
EE	-	-	-	-	-	-	-	-	-	18
EL	249	253	268	263	230	199	181	188	187	174
ES	740	717	732	733	757	727	722	730	583	534
FR	961	1.004	939	911	961	923	869	666	591	522
IE	60	57	59	51	59	62	39	40	-	-
IT	816	768	652	747	806	804	783	700	631	-
LU	9	6	5	5	8	4	11	-	-	-
HU	-	-	-	-	-	-	-	-	-	165
MT	-	-	-	-	-	-	-	-	-	6
NL	101	88	98	98	104	76	92	85	-	-
AT	100	102	95	120	103	92	76	96	75	70
PL	-	-	-	-	-	-	-	-	-	722
PT	346	312	314	261	278	205	231	176	170	161
FI	48	45	50	40	31	41	52	31	52	37
SE	56	50	38	53	70	57	69	62	52	45
UK	406	383	359	361	368	399	386	406	389	365
EU-14 <sup>2</sup>	4.076	3.936	3.799	3.801	3.979	3.779	3.650	3.304 <sup>1</sup>	2.975 <sup>1</sup>	2.788 <sup>1</sup>
Yearly Change		-3,5%	-3,5%	0,1%	4,7%	-5,0%	-3,4%	-9,5%	-10,0%	-6,3%
Total - all users <sup>2</sup>	34.868	34.763	34.552	34.151	33.486	32.882	31.758	29.243 <sup>1</sup>	26.919 <sup>1</sup>	26.060 <sup>1</sup>
% male passengers	11,7%	11,3%	11,0%	11,1%	11,9%	11,5%	11,5%	11,3%	11,1%	10,7%

Source: CARE Database / EC

Date of query: 27-nov-2007

<sup>1</sup> Using latest data available, i.e. 2005 for all countries except LU (2002), IE and NL (2003), IT (2004).<sup>2</sup> The data from EE, HU, MT and PL are not considered

From 1249 out of 3 17047 fatalities the Gender or Person Class is unknown (0,4%)

**Table 20: Annual number of female fatalities by country, pedestrians (1996-2005)**

	1996	1997	1998	1999	2000	2001	2002	2003	2004	2005
BE	59	54	76	68	65	68	59	58	39	43
DK	28	27	30	27	43	23	19	17	14	14
EE	-	-	-	-	-	-	-	-	-	13
EL	157	146	168	159	134	143	102	89	127	93
ES	334	347	357	337	297	285	248	251	239	243
FR	391	387	395	369	284	293	347	256	227	266
IE	38	41	36	39	30	29	29	22	-	-
IT	428	369	320	340	366	337	430	247	219	-
LU	0	4	1	0	5	3	2	-	-	-
HU	-	-	-	-	-	-	-	-	-	93
MT	-	-	-	-	-	-	-	-	-	4
NL	50	56	51	31	34	37	41	39	-	-
AT	64	67	84	79	74	49	75	57	56	42
PL	-	-	-	-	-	-	-	-	-	507
PT	211	195	143	135	111	121	108	96	89	63
FI	39	43	23	21	35	26	22	25	25	16
SE	36	29	23	39	36	29	26	23	26	19
UK	367	359	354	300	307	268	283	276	228	258
EU-14 <sup>2</sup>	2.201	2.123	2.061	1.943	1.821	1.711	1.791	1.458 <sup>1</sup>	1.352 <sup>1</sup>	1.339 <sup>1</sup>
Yearly Change		-3,6%	-2,9%	-5,7%	-6,3%	-6,0%	4,7%	-18,6%	-7,3%	-1,0%
Total - all users <sup>2</sup>	34.868	34.763	34.552	34.151	33.486	32.882	31.758	29.243 <sup>1</sup>	26.919 <sup>1</sup>	26.060 <sup>1</sup>
% female pedestrians	6,3%	6,1%	6,0%	5,7%	5,4%	5,2%	5,6%	5,0%	5,0%	5,1%

Source: CARE Database / EC

Date of query: 27-nov-2007

<sup>1</sup> Using latest data available, i.e. 2005 for all countries except LU (2002), IE and NL (2003), IT (2004).<sup>2</sup> The data from EE, HU, MT and PL are not considered

From 1249 out of 3 17047 fatalities the Gender or Person Class is unknown (0,4%)

**Table 21: Annual number of male fatalities by country, pedestrians (1996-2005)**

	1996	1997	1998	1999	2000	2001	2002	2003	2004	2005
BE	95	87	85	86	77	90	68	55	62	64
DK	40	60	43	55	56	26	44	32	29	30
EE	-	-	-	-	-	-	-	-	-	33
EL	257	257	239	233	238	195	175	167	165	136
ES	594	602	612	542	559	532	497	499	416	426
FR	652	595	649	563	554	530	519	370	354	369
IE	76	87	77	52	54	60	55	40	-	-
IT	557	524	524	507	531	595	733	534	491	-
LU	9	4	2	2	6	8	4	-	-	-
HU	-	-	-	-	-	-	-	-	-	191
MT	-	-	-	-	-	-	-	-	-	2
NL	59	63	57	77	71	67	55	56	-	-
AT	93	89	81	103	66	68	85	75	76	55
PL	-	-	-	-	-	-	-	-	-	1.237
PT	413	354	263	259	271	217	229	185	144	152
FI	31	26	39	46	27	36	18	34	24	29
SE	38	43	46	47	37	58	32	32	41	31
UK	672	651	592	608	582	590	525	526	466	441
EU-14 <sup>2</sup>	3.587	3.442	3.310	3.180	3.129	3.071	3.039	2.608 <sup>1</sup>	2.368 <sup>1</sup>	2.323 <sup>1</sup>
Yearly Change		-4,0%	-3,8%	-3,9%	-1,6%	-1,9%	-1,0%	-14,2%	-9,2%	-1,9%
Total - all users <sup>2</sup>	34.868	34.763	34.552	34.151	33.486	32.882	31.758	29.243 <sup>1</sup>	26.919 <sup>1</sup>	26.060 <sup>1</sup>
% male pedestrians	10,3%	9,9%	9,6%	9,3%	9,3%	9,3%	9,6%	8,9%	8,8%	8,9%

Source: CARE Database / EC

Date of query: 27-nov-2007

<sup>1</sup> Using latest data available, i.e. 2005 for all countries except LU (2002), IE and NL (2003), IT (2004).<sup>2</sup> The data from EE, HU, MT and PL are not considered

From 1249 out of 3 17047 fatalities the Gender or Person Class is unknown (0,4%)

## 4 Fatalities 2005

### 4.1 People involved

#### 4.1.1 Age and gender of persons

Table 22: Number of total fatalities by age group by country, 2005

	0-9	10-15	16-17	18-20	21-24	25-29	30-39	40-49	50-59	60-64	65-74	75+	Total
BE	19	20	29	82	114	118	187	168	115	45	90	96	1.089
DK	7	8	18	28	24	31	50	43	37	15	25	45	331
EE	7	6	4	9	17	14	27	32	22	10	13	7	169
EL	23	26	33	113	213	216	284	187	160	59	179	143	1.658
ES	69	80	109	292	441	509	863	595	492	196	384	335	4.442
FR	74	94	180	510	696	558	789	685	539	159	384	630	5.318
IE**	12	5	11	34	48	36	60	30	32	8	22	31	337
IT*	52	107	149	331	552	614	1.005	645	521	242	511	654	5.625
LU***	2	1	3	6	4	6	19	11	5	0	3	2	62
HU	23	20	17	60	99	137	202	218	215	71	108	98	1.278
MT	1	2	3	4	1	1	2	0	0	0	1	2	17
NL**	33	38	47	85	94	89	157	117	99	48	82	139	1.028
AT	14	21	38	73	67	55	129	112	77	31	71	80	768
PL	87	111	117	363	570	531	757	812	820	210	482	449	5.444
PT	17	22	27	91	130	120	221	169	161	55	146	76	1.247
FI	16	10	11	29	24	33	50	57	49	9	35	56	379
SE	3	16	10	28	39	36	60	57	56	28	39	65	440
UK	58	98	191	358	342	316	516	412	317	103	217	399	3.336
EU-18	517	685	998	2.497	3.475	3.420	5.378	4.350	3.717	1.289	2.792	3.307	32.968
% by age group	1,6%	2,1%	3,0%	7,6%	10,5%	10,4%	16,3%	13,2%	11,3%	3,9%	8,5%	10,0%	100%

Source: CARE Database / EC

Date of query: 29-oct-2007

\* Data 2004

\*\* Data 2003

\*\*\* Data 2002

Table 23: Number of female fatalities by age group by country, 2005

	0-9	10-15	16-17	18-20	21-24	25-29	30-39	40-49	50-59	60-64	65-74	75+	Total
BE	8	5	8	15	14	18	29	33	27	19	39	45	260
DK	3	4	2	3	2	5	12	7	8	5	8	21	80
EE	4	3	2	3	5	1	2	7	3	4	3	4	41
EL	10	10	4	22	29	39	46	39	31	15	51	53	355
ES	28	26	22	58	81	89	123	105	119	51	106	138	958
FR	30	32	43	104	126	95	134	151	146	46	153	249	1.314
IE**	5	2	6	7	7	3	8	4	9	3	8	16	79
IT*	25	23	32	52	91	91	155	107	111	54	148	177	1.133
LU***	0	0	1	1	1	1	3	1	1	0	1	2	12
HU	8	7	6	21	22	27	29	55	45	20	36	32	308
MT	1	1	1	0	0	0	0	0	0	0	0	1	4
NL**	9	18	17	19	21	13	26	19	24	13	34	49	262
AT	4	5	12	15	17	12	20	34	16	9	23	28	195
PL	40	45	47	75	83	71	131	131	159	53	172	209	1.243
PT	3	6	5	18	21	14	33	29	33	9	38	23	233
FI	4	4	2	6	6	4	12	12	12	2	17	15	96
SE	0	7	2	9	6	10	10	13	12	10	12	22	113
UK	26	36	50	73	63	46	74	90	69	35	72	179	816
EU-18	208	234	261	501	595	539	847	836	825	348	921	1.263	7.502
% by age group	2,8%	3,1%	3,5%	6,7%	7,9%	7,2%	11,3%	11,1%	11,0%	4,6%	12,3%	16,8%	100%

Source: CARE Database / EC

Date of query: 29-oct-2007

\* Data 2004

\*\* Data 2003

\*\*\* Data 2002

**Table 24: Number of male fatalities by age group by country, 2005**

	0-9	10-15	16-17	18-20	21-24	25-29	30-39	40-49	50-59	60-64	65-74	75+	Total
BE	11	15	21	67	100	100	158	135	87	26	51	51	823
DK	4	4	16	25	22	26	38	36	29	10	17	24	251
EE	3	3	2	6	12	13	25	24	19	6	10	3	126
EL	13	16	29	91	184	177	238	148	129	44	128	90	1.296
ES	42	54	88	233	359	419	739	486	373	145	278	196	3.446
FR	44	62	137	406	570	463	655	534	393	113	231	381	4.004
IE**	7	2	5	27	41	30	51	25	22	5	14	15	246
IT*	27	84	117	279	461	523	850	538	410	188	363	477	4.492
LU***	2	1	2	5	3	5	16	10	4	0	2	0	50
HU	15	13	11	39	77	110	173	163	170	51	72	66	963
MT	0	1	2	4	1	1	2	0	0	0	1	1	13
NL**	24	20	30	66	72	74	131	98	72	35	48	88	758
AT	10	16	26	58	50	43	109	78	61	22	48	52	573
PL	47	66	69	287	487	459	623	680	659	156	307	240	4.175
PT	14	16	22	73	109	106	185	140	125	46	107	54	1.005
FI	12	6	9	23	18	29	38	45	37	7	18	41	283
SE	3	9	8	19	33	26	50	44	44	18	27	43	324
UK	32	62	141	285	279	270	442	322	248	68	145	220	2.520
EU-18	309	450	734	1.993	2.878	2.874	4.523	3.507	2.882	940	1.867	2.042	25.349
% by age group	1,2%	1,8%	2,9%	7,9%	11,4%	11,3%	17,8%	13,8%	11,4%	3,7%	7,4%	8,1%	100%

Source: CARE Database / EC  
Date of query: 29-oct-2007  
\* Data 2004  
\*\* Data 2003  
\*\*\* Data 2002

#### 4.1.2 Age of persons by mode of transport

**Table 25: Number of fatalities aged 0 to 15 by mode of transport (in which the fatality was travelling) by country, 2005**

	Peder- trian	Pedal Cycle	Motor- Moped	Car or cycle	Taxi	Lorry, under Heavy				Total
						3,5 Tonnes	Goods Vehicle	Bus or Coach	Agricultural Tractor	
BE	9	11	1	0	15	0	0	0	0	39
DK	3	4	0	0	7	0	0	0	1	15
EE	4	3	1	0	2	0	1	0	0	13
EL	11	6	2	6	20	3	0	0	0	49
ES	29	13	17	1	81	6	1	1	0	149
FR	40	13	28	4	76	3	1	3	0	168
IE**	8	3	0	0	6	0	0	0	0	17
IT*	23	13	41	12	66	1	0	1	0	159
LU***	1	0	0	0	2	0	0	0	0	3
HU	9	4	1	0	26	3	0	0	0	43
MT	2	0	0	0	0	1	0	0	0	3
NL**	17	25	3	0	20	3	0	0	3	71
AT	11	3	6	0	13	1	0	1	0	35
PL	78	28	6	5	70	0	3	5	3	198
PT	10	6	0	0	19	3	0	0	0	39
FI	7	7	2	0	10	0	0	0	0	26
SE	3	3	4	1	7	0	0	0	0	19
UK	69	23	2	5	54	0	1	2	0	156
EU-18	334	164	114	34	494	24	7	13	7	1.202
% by vehicle group	27,8%	13,7%	9,5%	2,8%	41,1%	2,0%	0,6%	1,1%	0,6%	100,0%

Source: CARE Database / EC  
Date of query: Oct-2007  
\* Data 2004  
\*\* Data 2003  
\*\*\* Data 2002

**Table 26: Number of fatalities aged 16 to 24 by mode of transport (in which the fatality was travelling) by country, 2005**

	Peder- trian	Pedal Cycle	Moped	Motor- cycle	Car or Taxi	Lorry, under Heavy				Total
						3,5 Tonnes	Goods Vehicle	Bus or Coach	Agricultural Tractor	
BE	9	3	16	14	160	7	2	0	0	225
DK	6	5	12	3	40	3	0	0	1	70
EE	5	0	0	1	23	0	0	0	0	30
EL	11	2	11	137	178	14	1	0	0	359
ES	39	6	134	77	527	30	9	1	1	843
FR	61	24	200	231	850	9	7	0	0	1.386
IE**	5	1	0	14	59	10	1	0	0	93
IT*	20	10	122	223	628	8	6	2	0	1.032
LU***	0	0	0	0	13	0	0	0	0	13
HU	17	5	6	25	118	5	0	0	0	176
MT	1	0	0	1	2	4	0	0	0	8
NL**	4	15	34	15	147	11	0	0	0	226
AT	17	5	18	22	113	1	0	1	1	178
PL	163	37	7	62	724	0	32	17	8	1.050
PT	9	5	13	63	133	22	1	0	2	249
FI	2	2	1	7	50	2	0	0	0	64
SE	6	1	1	8	55	2	1	0	1	77
UK	109	17	15	111	619	16	3	0	0	891
EU-18	484	137	589	1.013	4.440	143	63	21	14	6.969
% by vehicle group	6,9%	2,0%	8,5%	14,5%	63,7%	2,1%	0,9%	0,3%	0,2%	100,0%

Source: CARE Database / EC  
Date of query: Oct-2007  
\* Data 2004  
\*\* Data 2003  
\*\*\* Data 2002

**Table 27: Number of fatalities aged 25 to 64 by mode of transport by country, 2005**

	Peder- trian	Pedal Cycle	Moped	Motor- cycle	Car or Taxi	Lorry, under Heavy				Total
						3,5 Tonnes	Goods Vehicle	Bus or Coach	Agricultural Tractor	
BE	35	27	11	109	359	36	14	0	1	633
DK	17	21	12	12	89	19	2	2	1	176
EE	27	1	0	4	55	0	6	0	2	105
EL	74	6	29	234	496	32	12	6	12	906
ES	301	40	115	390	1.440	175	129	19	8	2.656
FR	208	74	111	638	1.556	37	78	9	7	2.730
IE**	27	2	0	41	82	8	4	0	0	166
IT*	259	124	142	777	1.492	41	43	13	12	3.027
LU***	2	1	0	0	35	0	3	0	0	41
HU	166	94	24	74	424	34	15	3	0	843
MT	1	0	0	2	0	0	0	0	0	3
NL**	37	64	30	80	248	40	7	0	2	510
AT	26	23	8	73	236	21	11	0	3	404
PL	939	326	28	83	1.498	0	175	25	44	3.130
PT	104	19	65	124	283	80	27	1	16	725
FI	16	8	0	25	132	7	6	1	0	198
SE	19	15	3	35	149	8	5	1	0	237
UK	267	86	5	428	778	38	52	7	0	1.664
EU-18	2.525	931	583	3.130	9.352	575	589	87	108	18.154
% by vehicle group	13,9%	5,1%	3,2%	17,2%	51,5%	3,2%	3,2%	0,5%	0,6%	100,0%

Source: CARE Database / EC  
Date of query: Oct-2007  
\* Data 2004  
\*\* Data 2003  
\*\*\* Data 2002

**Table 28: Number of fatalities aged 65+ by mode of transport  
(in which the fatality was travelling) by country, 2005**

	Peder- trian	Pedal Cycle	Moped	Motor- cycle	Car or Taxi	Lorry, under Heavy 3,5 Goods Bus or Agricultural				Total
						Tonnes	Vehicle	Coach	Tractor	
BE	54	30	2	0	85	1	0	0	0	186
DK	18	11	5	1	33	1	0	1	0	70
EE	10	3	1	0	4	0	0	0	0	20
EL	126	4	16	18	117	23	1	2	14	322
ES	285	23	43	2	305	29	1	4	17	719
FR	325	69	17	19	566	6	3	3	5	1.014
IE**	22	4	0	0	21	1	3	0	0	53
IT*	381	143	69	27	504	5	0	3	8	1.165
LU***	3	0	0	0	2	0	0	0	0	5
HU	90	47	9	1	51	2	0	1	0	206
MT	2	0	0	0	1	0	0	0	0	3
NL**	39	84	27	0	68	1	1	0	0	221
AT	43	16	9	3	70	1	0	0	4	151
PL	512	192	12	4	190	0	5	3	12	931
PT	87	16	29	0	55	15	2	1	15	222
FI	20	26	1	0	39	3	0	1	0	91
SE	22	19	0	2	59	1	0	0	0	104
UK	250	25	1	16	291	2	3	12	0	616
EU-18	2.288	712	240	93	2.460	91	19	31	75	6.099
% by vehicle group	37,5%	11,7%	3,9%	1,5%	40,3%	1,5%	0,3%	0,5%	1,2%	100,0%

Source: CARE Database / EC  
Date of query: Oct-2007  
\* Data 2004  
\*\* Data 2003  
\*\*\* Data 2002





## 4.2 Modes of transport

### 4.2.1 Mode of transport by age of persons

Figure 20: Fatalities by age group and mode of transport (EU-18), 2005\*

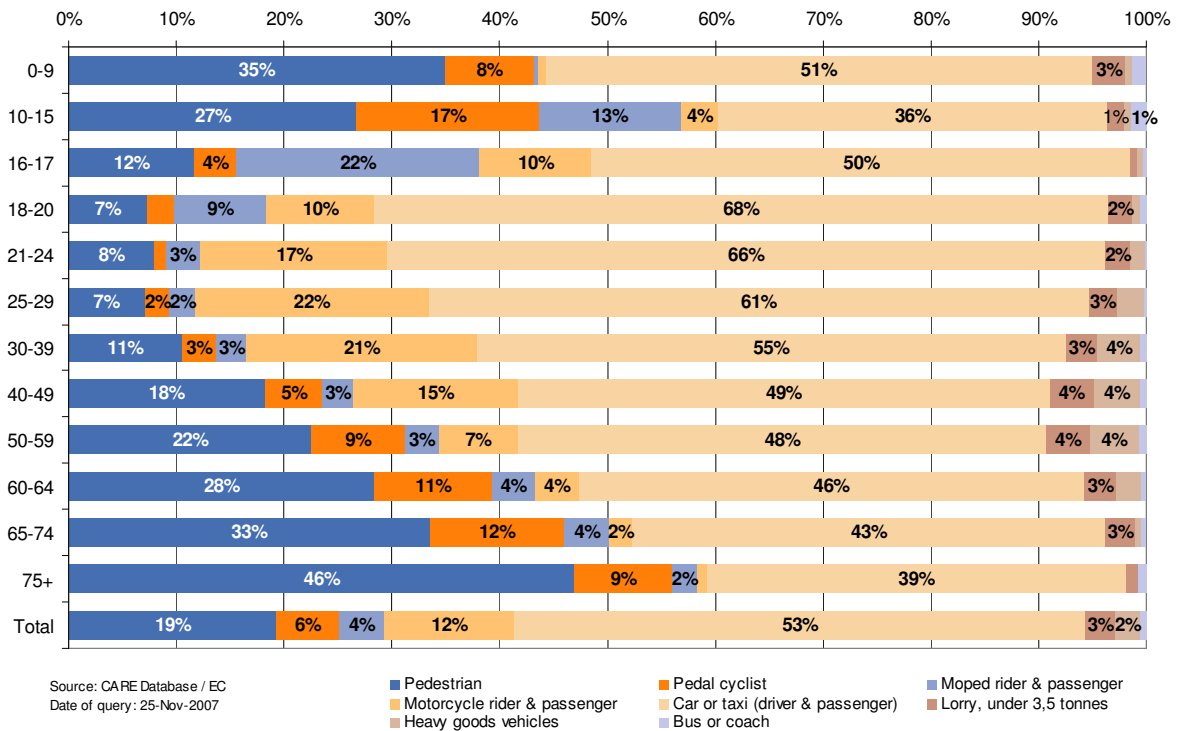


Table 29: Number of pedestrian fatalities by age group by country, 2005

	0-9	10-15	16-17	18-20	21-24	25-29	30-39	40-49	50-59	60-64	65-74	75+	Total
BE	6	3	4	2	3	4	4	13	9	5	18	36	108
DK	1	2	1	3	2	3	3	5	5	1	4	14	44
EE	2	2	0	2	3	4	5	8	4	6	7	3	46
EL	6	5	3	2	6	5	6	25	23	15	50	76	234
ES	16	13	7	14	18	41	75	74	71	39	108	177	680
FR	27	13	8	20	33	20	49	51	58	30	98	227	635
IE**	6	2	0	2	3	3	7	3	11	3	8	14	64
IT*	15	8	2	6	12	29	59	63	72	36	122	259	710
LU***	1	0	0	0	0	0	0	2	0	0	2	1	6
HU	7	2	0	5	12	5	21	50	66	24	41	49	289
MT	1	1	1	0	0	1	0	0	0	0	1	1	6
NL**	11	6	1	2	1	3	8	11	10	5	11	28	97
AT	7	4	4	8	5	3	5	9	7	2	13	30	97
PL	34	44	30	48	85	62	168	283	318	108	232	280	1.756
PT	7	3	1	0	8	5	22	29	35	14	55	32	214
FI	6	1	0	0	2	1	4	6	5	0	3	17	45
SE	1	2	1	3	2	2	5	7	2	3	4	18	50
UK	24	45	30	42	37	32	66	73	69	27	73	177	699
EU-18	178	156	93	159	232	223	507	712	766	317	849	1.439	5.780
% by age group	3,1%	2,7%	1,6%	2,7%	4,0%	3,9%	8,8%	12,3%	13,2%	5,5%	14,7%	24,9%	100%

Source: CARE Database / EC  
Date of query: 29-oct-2007  
\* Data 2004  
\*\* Data 2003  
\*\*\* Data 2002

\* IT: 2004, IE & NL: 2003, LU: 2002



**Table 30: Number of pedal cyclist fatalities by age group by country, 2005**

	0-9	10-15	16-17	18-20	21-24	25-29	30-39	40-49	50-59	60-64	65-74	75+	Total
BE	0	11	2	1	0	1	5	4	9	8	19	11	71
DK	1	3	0	3	2	5	2	3	8	3	5	6	41
EE	2	1	0	0	0	0	0	1	0	0	2	1	7
EL	3	3	0	2	0	0	4	0	2	0	4	0	18
ES	2	10	0	2	3	4	9	13	8	5	13	10	82
FR	3	10	11	8	5	8	11	17	22	16	37	32	180
IE**	1	2	0	0	1	1	0	0	1	0	3	1	10
IT*	2	11	4	2	4	11	25	26	37	25	56	87	296
LU***	0	0	0	0	0	0	0	0	1	0	0	0	1
HU	1	3	1	2	2	1	15	22	37	19	27	20	152
MT	0	0	0	0	0	0	0	0	0	0	0	0	0
NL**	6	19	6	5	4	4	10	10	23	17	33	51	188
AT	1	2	1	3	1	2	4	6	7	4	6	10	47
PL	9	19	8	15	14	24	49	87	129	37	114	78	603
PT	1	5	1	3	0	2	5	5	5	3	7	9	48
FI	4	3	1	1	0	0	0	3	4	1	11	15	43
SE	0	3	0	0	1	2	1	5	3	4	7	12	38
UK	7	16	5	8	4	12	25	18	27	4	9	16	152
EU-18	44	121	41	56	41	77	164	220	323	147	353	360	1.976
% by age group	2,2%	6,1%	2,1%	2,8%	2,1%	3,9%	8,3%	11,1%	16,3%	7,4%	17,8%	18,2%	100%

Source: CARE Database / EC

Date of query: 29-oct-2007

\* Data 2004

\*\* Data 2003

\*\*\* Data 2002

From 32 pedal cyclist fatalities the age is unknown.

**Table 31: Number of moped and motorcycle rider fatalities by age group by country, 2005**

	0-9	10-15	16-17	18-20	21-24	25-29	30-39	40-49	50-59	60-64	65-74	75+	Total
BE	0	0	4	11	12	27	42	32	17	1	1	1	148
DK	0	0	10	1	3	2	3	11	5	3	3	3	44
EE	0	1	0	1	0	2	1	1	0	0	1	0	7
EL	0	7	11	37	82	78	97	38	30	6	15	17	418
ES	0	10	55	52	76	116	208	96	41	18	30	14	716
FR	0	24	78	133	171	166	251	204	82	7	19	16	1.151
IE**	0	0	1	4	7	13	16	9	2	0	0	0	52
IT*	0	35	77	74	153	217	356	181	96	18	41	50	1.298
LU***	0	0	0	0	0	0	0	0	0	0	0	0	0
HU	0	1	2	6	15	25	31	18	13	7	5	5	128
MT	0	0	0	1	0	0	2	0	0	0	0	0	3
NL**	0	1	23	7	15	25	41	21	14	6	5	22	180
AT	0	6	10	8	16	13	27	20	11	7	9	3	130
PL	1	10	7	16	39	47	28	9	16	4	11	3	191
PT	0	0	9	17	39	42	72	35	16	11	17	8	267
FI	0	2	4	2	1	8	6	6	5	0	0	1	35
SE	0	3	2	1	6	6	8	6	9	4	1	1	47
UK	0	4	25	41	51	72	160	126	57	10	13	3	562
EU-18	1	104	318	412	686	860	1.349	814	414	102	171	147	5.376
% by age group	0,0%	1,9%	5,9%	7,7%	12,8%	16,0%	25,1%	15,1%	7,7%	1,9%	3,2%	2,7%	100,0%

Source: CARE Database / EC

Date of query: Oct-2007

\* Data 2004

\*\* Data 2003

\*\*\* Data 2002

**Table 32: Number of moped and motorcycle passenger fatalities by age group by country, 2005**

	0-9	10-15	16-17	18-20	21-24	25-29	30-39	40-49	50-59	60-64	65-74	75+	Total
BE	0	1	1	2	0	1	0	0	0	0	0	0	5
DK	0	0	0	0	1	0	0	0	0	0	0	0	1
EE	0	0	0	0	0	0	0	0	0	0	0	0	0
EL	0	1	4	5	9	7	5	1	1	0	2	0	36
ES	0	7	10	7	11	7	12	4	3	0	0	0	65
FR	1	7	14	17	18	7	17	10	5	0	0	1	97
IE**	0	0	0	1	1	0	1	0	0	0	0	0	3
IT*	1	17	12	9	20	18	20	10	3	0	3	2	134
LU***	0	0	0	0	0	0	0	0	0	0	0	0	0
HU	0	0	1	5	2	1	3	0	0	0	0	0	12
MT	0	0	0	0	0	0	0	0	0	0	0	0	0
NL**	0	2	1	1	2	1	0	0	2	0	0	0	9
AT	0	0	1	1	4	1	1	1	0	0	0	0	9
PL	0	0	3	3	1	2	3	1	0	1	1	1	17
PT	0	0	2	5	3	3	5	5	0	0	3	0	26
FI	0	0	0	0	1	0	0	0	0	0	0	0	1
SE	0	2	0	0	0	2	1	2	0	0	0	0	7
UK	2	1	2	3	4	1	3	3	1	0	1	0	21
EU-18	4	38	52	58	77	51	70	36	15	1	11	4	443
% by age group	0,9%	8,7%	11,7%	13,2%	17,5%	11,6%	15,8%	8,2%	3,5%	0,2%	2,4%	0,9%	100,0%

Source: CARE Database / EC

Date of query: Oct-2007

\* Data 2004

\*\* Data 2003

\*\*\* Data 2002

**Table 33: Number of car or taxi driver fatalities by age group by country, 2005**

	0-9	10-15	16-17	18-20	21-24	25-29	30-39	40-49	50-59	60-64	65-74	75+	Total
BE	0	0	2	39	64	64	88	82	54	16	31	29	471
DK	0	1	1	12	13	16	28	16	8	4	11	12	122
EE	0	0	1	3	7	6	9	14	10	2	1	1	54
EL	0	0	3	27	66	88	115	64	67	22	48	15	518
ES	0	1	1	110	185	214	347	223	212	76	117	67	1.564
FR	0	0	9	186	344	270	355	293	284	74	150	248	2.228
IE**	0	0	0	11	20	15	20	13	11	3	4	10	110
IT*	0	0	1	118	221	234	374	230	201	105	184	162	1.867
LU***	0	0	0	2	3	4	16	8	3	0	1	1	38
HU	0	0	2	17	34	70	84	63	60	9	18	14	372
MT	0	0	0	0	1	0	0	0	0	0	0	1	2
NL**	0	0	1	41	50	41	70	51	33	14	21	23	345
AT	0	0	7	42	30	26	68	51	38	12	26	31	331
PL	0	1	7	130	244	238	303	248	165	26	59	37	1.467
PT	0	0	1	22	41	33	66	44	47	13	29	8	303
FI	0	0	0	16	17	18	29	30	23	5	9	15	162
SE	0	1	2	17	17	16	31	26	30	9	21	23	194
UK	0	5	41	167	150	141	191	134	107	40	75	114	1.166
EU-18	0	9	79	959	1.507	1.494	2.195	1.591	1.353	430	805	811	11.314
% by age group	0,0%	0,1%	0,7%	8,5%	13,3%	13,2%	19,4%	14,1%	12,0%	3,8%	7,1%	7,2%	100,0%

Source: CARE Database / EC

Date of query: Oct-2007

\* Data 2004

\*\* Data 2003

\*\*\* Data 2002

**Table 34: Number of car or taxi passenger fatalities by age group by country, 2005**

	0-9	10-15	16-17	18-20	21-24	25-29	30-39	40-49	50-59	60-64	65-74	75+	Total
BE	12	3	13	16	26	13	20	8	7	7	15	10	153
DK	4	2	6	7	1	3	7	2	3	2	2	8	47
EE	2	0	2	3	7	0	7	3	3	1	1	1	30
EL	10	10	11	32	39	34	43	36	17	10	32	22	298
ES	46	34	32	92	108	75	103	81	73	35	73	48	826
FR	39	37	60	139	112	63	75	67	51	24	72	96	837
IE**	5	1	8	11	9	3	10	1	5	1	3	4	64
IT*	34	32	51	119	118	83	104	65	61	35	81	77	957
LU***	1	1	3	4	1	2	1	1	0	0	0	0	14
HU	13	13	11	23	31	28	36	42	23	9	12	7	248
MT	0	0	0	1	0	0	0	0	0	0	0	0	1
NL**	12	8	14	24	17	9	12	8	6	3	11	13	137
AT	5	8	13	11	10	6	12	13	7	3	11	2	101
PL	41	28	56	127	160	129	132	111	123	23	49	45	1.059
PT	8	11	11	31	27	15	26	16	18	5	9	9	192
FI	6	4	6	9	2	6	9	4	6	2	8	7	69
SE	2	4	4	7	8	8	9	5	6	7	5	10	77
UK	23	26	84	91	86	46	44	35	24	16	39	63	578
EU-18	263	222	386	746	762	523	650	498	433	182	423	422	5.687
% by age group	4,6%	3,9%	6,8%	13,1%	13,4%	9,2%	11,4%	8,8%	7,6%	3,2%	7,4%	7,4%	100,0%

Source: CARE Database / EC  
Date of query: Oct-2007  
\* Data 2004  
\*\* Data 2003  
\*\*\* Data 2002

**Table 35: Number of fatalities in heavy goods vehicles and lorries <3,5t by age group by country, 2005**

	0-9	10-15	16-17	18-20	21-24	25-29	30-39	40-49	50-59	60-64	65-74	75+	Total
BE	0	0	0	4	3	6	9	17	7	2	1	0	49
DK	0	0	0	1	1	2	6	5	5	1	0	1	22
EE	0	0	0	0	0	1	2	1	2	0	0	0	6
EL	0	0	0	1	6	2	9	12	10	4	15	2	62
ES	0	0	0	4	19	30	80	72	51	17	16	3	294
FR	0	0	0	3	9	17	22	29	26	3	4	1	116
IE**	0	0	0	1	4	1	5	4	1	0	3	1	20
IT*	0	0	0	0	11	5	30	22	17	3	1	0	94
LU***	0	0	0	0	0	0	1	0	1	0	0	0	2
HU	0	0	0	0	2	3	4	11	10	2	1	0	33
MT	0	0	0	0	0	0	0	0	0	0	0	0	0
NL**	0	0	0	3	5	5	11	13	9	3	1	1	51
AT	0	0	0	0	1	2	7	9	3	2	1	0	25
PL	0	0	0	2	13	20	40	35	33	4	2	0	149
PT	0	0	0	11	6	11	23	22	23	6	9	2	113
FI	0	0	0	1	1	0	2	4	5	0	2	0	15
SE	0	0	0	0	3	0	3	3	5	0	1	0	15
UK	0	0	2	3	8	8	21	20	29	4	3	2	100
EU-18	0	0	2	34	92	114	275	278	237	51	60	13	1.166
% by age group	0,0%	0,0%	0,2%	2,9%	7,9%	9,8%	23,6%	23,9%	20,3%	4,4%	5,2%	1,2%	100,0%

Source: CARE Database / EC  
Date of query: Oct-2007  
\* Data 2004  
\*\* Data 2003  
\*\*\* Data 2002

**Table 36: Number of fatalities in buses or coaches by age group by country, 2005**

	0-9	10-15	16-17	18-20	21-24	25-29	30-39	40-49	50-59	60-64	65-74	75+	Total
BE	0	0	0	0	0	0	0	0	0	0	0	0	0
DK	0	0	0	0	0	0	0	0	1	1	0	1	3
EE	0	0	0	0	0	0	0	0	0	0	0	0	0
EL	0	0	0	0	0	0	1	2	2	1	2	0	8
ES	1	0	0	0	1	2	3	6	8	0	4	0	26
FR	1	2	0	0	0	1	2	2	3	1	1	2	15
IE**	0	0	0	0	0	0	0	0	0	0	0	0	0
IT*	0	1	0	1	1	1	3	5	3	1	3	0	24
LU***	0	0	0	0	0	0	0	0	0	0	0	0	0
HU	0	0	0	0	0	0	1	2	0	0	0	1	4
MT	0	0	0	0	0	0	0	0	0	0	0	0	0
NL**	0	0	0	0	0	0	0	0	0	0	0	0	0
AT	1	0	1	0	0	0	0	0	0	0	0	0	2
PL	1	4	2	12	3	1	12	7	5	0	2	1	52
PT	0	0	0	0	0	0	0	1	0	0	0	1	2
FI	0	0	0	0	0	0	0	1	0	0	0	1	2
SE	0	0	0	0	0	0	1	0	0	0	0	0	1
UK	1	1	0	0	0	1	2	1	2	1	1	11	21
EU-18	5	8	3	13	5	6	25	27	24	5	13	18	160
% by age group	3,2%	5,1%	1,9%	8,1%	3,2%	3,9%	15,3%	16,8%	15,3%	3,3%	7,8%	11,6%	100,0%

Source: CARE Database / EC  
Date of query: Oct-2007  
\* Data 2004  
\*\* Data 2003  
\*\*\* Data 2002

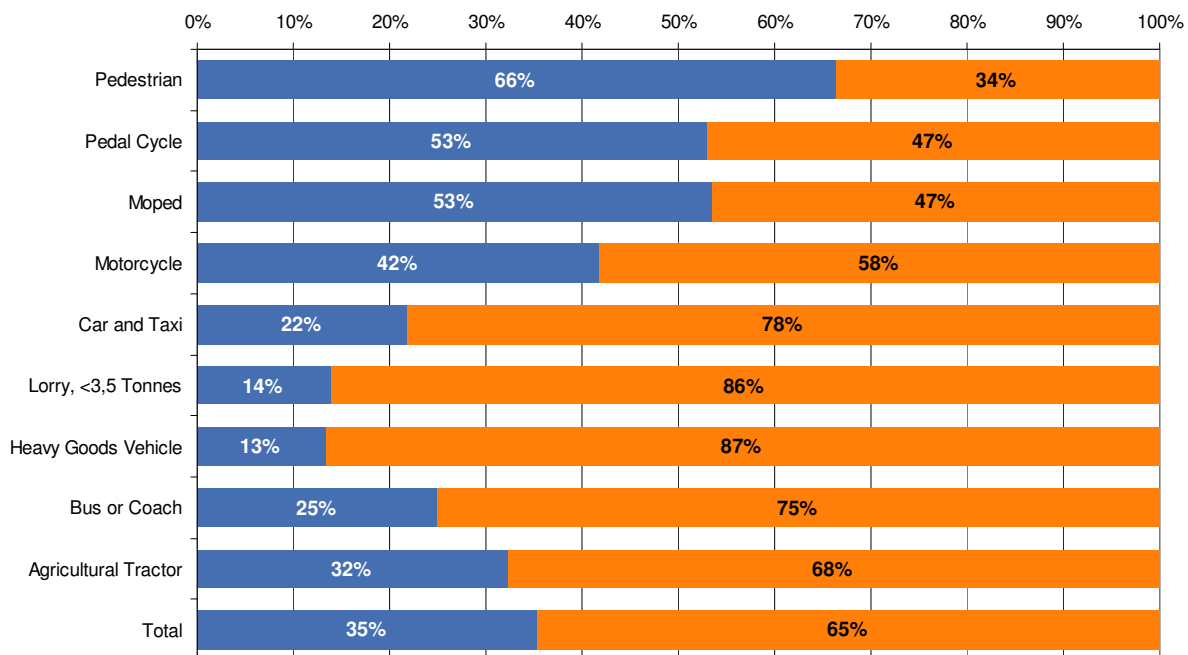
**Table 37: Number of fatalities by person class and age group by country, 2005**

	Driver				Passenger				Pedestrian			
	0 to 15	16 to 24	25 to 64	65+	0 to 15	16 to 24	25 to 64	65+	0 to 15	16 to 24	25 to 64	65+
BE	14	154	531	107	16	62	67	25	9	9	35	54
DK	5	48	139	41	7	16	19	11	3	6	17	18
EE	4	12	58	8	5	13	18	2	4	5	27	10
EL	13	239	666	128	25	109	166	68	11	11	74	126
ES	25	521	1.885	293	95	283	470	141	29	39	301	285
FR	37	961	2.173	511	91	364	349	178	40	61	208	325
IE**	3	51	117	24	6	37	22	7	8	5	27	22
IT*	48	671	2.337	606	88	341	431	178	23	20	259	381
LU***	0	5	34	2	2	8	5	0	1	0	2	3
HU	4	83	512	95	30	76	165	21	9	17	166	90
MT	0	2	2	1	1	5	0	0	2	1	1	2
NL**	26	160	423	158	28	62	49	24	17	4	37	39
AT	8	120	324	92	16	41	54	16	11	17	26	43
PL	41	498	1.591	311	79	389	600	108	78	163	939	512
PT	6	154	500	105	23	86	121	31	10	9	104	87
FI	9	44	153	54	10	18	29	17	7	2	16	20
SE	8	51	173	67	8	20	43	15	3	6	19	22
UK	32	505	1.211	251	55	277	186	115	69	109	267	250
EU-18	282	4.279	12.830	2.854	585	2.206	2.793	957	334	484	2.525	2.288
% by age group	1,4%	21,1%	63,4%	14,1%	8,9%	33,7%	42,7%	14,6%	5,9%	8,6%	44,8%	40,6%

Source: CARE Database / EC  
Date of query: Oct-2007  
\* Data 2004  
\*\* Data 2003  
\*\*\* Data 2002

### 4.2.2 Mode of transport by type of area

Figure 21: Fatalities by type of area and mode of transport (EU-18), 2005\*



Source: CARE Database / EC  
Date of query: 25-Nov-2007

■ Inside urban area    ■ Outside urban area

\* IT: 2004, IE & NL: 2003, LU: 2002

**Table 38: Number of fatalities by mode of transport (in which the fatality was travelling) and type of area by country, 2005**

	Pedestrian		Pedal Cycle		Moped		Motorcycle		Car or Taxi	
	inside urban area	outside urban area	inside urban area	outside urban area	inside urban area	outside urban area	inside urban area	outside urban area	inside urban area	outside urban area
BE	75	33	21	50	13	17	35	88	106	518
DK	22	22	22	19	14	15	6	10	28	141
EE	21	25	3	4	0	2	3	2	12	72
EL	167	67	10	8	37	21	260	139	240	576
ES	332	348	23	59	138	174	114	358	148	2.241
FR	461	174	69	111	178	178	346	546	577	2.488
IE**2	39	25	0	10	0	0	17	38	28	146
IT*1	539	171	184	112	241	147	500	570	785	2.039
LU***1	5	1	0	1	0	0	0	0	15	25
HU	187	102	88	64	22	18	51	49	140	480
MT	6	0	0	0	0	0	3	0	3	0
NL**	64	33	114	74	55	39	22	73	78	405
AT	67	30	25	22	12	29	17	81	63	369
PL	1.154	602	324	279	23	30	94	63	808	1.718
PT	129	86	32	16	71	35	106	82	152	343
FI	33	12	21	22	1	3	12	20	30	201
SE	28	20	24	11	4	4	14	31	35	234
UK <sup>2</sup>	509	190	86	66	17	6	200	361	452	1.292
EU-18	3.838	1.940	1.046	928	826	718	1.800	2.511	3.700	13.288
% by area	66,4%	33,6%	53,0%	47,0%	53,5%	46,5%	41,8%	58,2%	21,8%	78,2%

	Lorry, under 3.5 Tonnes		Heavy Goods Vehicle		Bus or Coach		Agricultural Tractor		Total
	inside urban area	outside urban area	inside urban area	outside urban area	inside urban area	outside urban area	inside urban area	outside urban area	
BE	2	42	0	16	0	0	0	1	1.089
DK	1	21	0	2	1	2	0	3	330
EE	0	0	2	5	0	0	0	2	167
EL	20	52	5	10	5	3	8	18	1.658
ES	12	232	2	139	1	25	4	22	4.442
FR	14	42	9	81	1	14	0	12	5.318
IE**2	2	17	0	8	0	0	0	0	337
IT*1	6	52	4	47	9	15	4	19	5.625
LU***1	0	0	0	3	0	0	0	0	62
HU	6	38	1	14	1	3	0	0	1.278
MT	5	0	0	0	0	0	0	0	17
NL**	9	46	1	7	0	0	2	3	1.028
AT	6	18	3	8	2	0	2	6	768
PL	0	0	49	168	7	45	32	35	5.444
PT	25	95	6	25	1	1	15	18	1.247
FI	1	11	2	4	1	1	0	0	379
SE	2	9	1	5	1	0	0	1	438
UK <sup>2</sup>	6	51	7	52	10	11	0	0	3.336
EU-14	117	726	92	594	40	120	67	140	32.963
% by area	13,9%	86,1%	13,4%	86,6%	24,9%	75,1%	32,3%	67,7%	100,0%

Source: CARE Database / EC  
Date of query: 30-Nov-2007

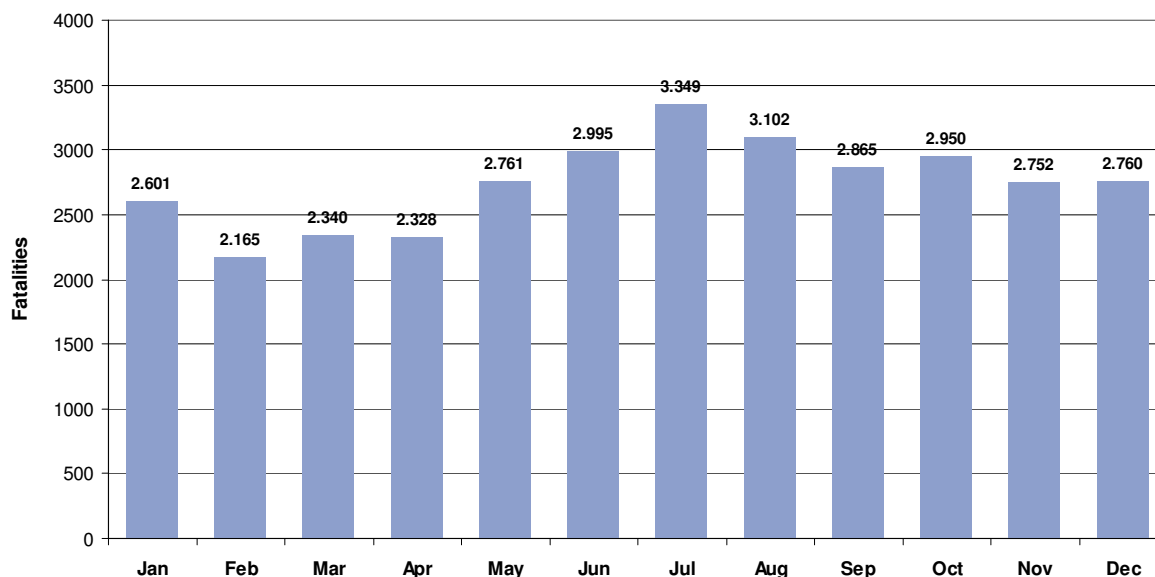
\* Data 2004  
\*\* Data 2003  
\*\*\* Data 2002

<sup>1</sup> Heavy goods vehicles include lorries <3,5t  
<sup>2</sup> Motorcycles including mopeds

## 4.3 Accident characteristics

### 4.3.1 Various periods of time (month, day of week, hour of day)

Figure 22: Number of fatalities by month (EU-18), 2005\*



Source: CARE database / EC  
Date of query: 19-Nov-2007

Table 39: Number of fatalities by month by country, 2005

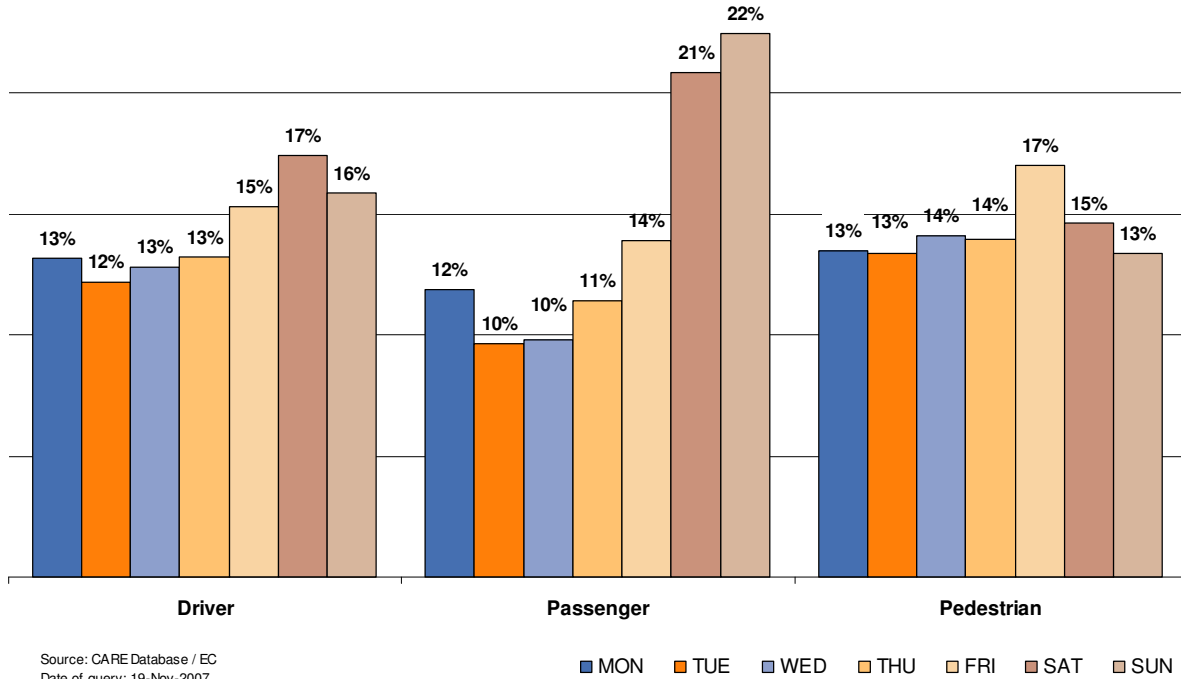
	Jan	Feb	Mar	Apr	May	Jun	Jul	Aug	Sep	Oct	Nov	Dec	Total
BE	97	73	78	90	97	122	101	76	98	98	79	80	1.089
DK	30	26	20	30	32	18	36	32	22	34	23	28	331
EE	19	7	10	5	14	16	15	13	19	17	18	16	169
EL	116	106	118	98	142	173	170	177	135	142	135	146	1.658
ES	345	341	365	341	371	401	442	414	362	372	325	361	4.442
FR	405	345	396	370	450	480	608	478	441	472	413	460	5.318
IE**	20	21	33	23	38	39	32	26	20	34	30	21	337
IT*	399	348	382	444	528	533	595	542	452	447	496	459	5.625
LU***	2	6	1	3	3	7	6	7	6	7	9	5	62
HU	84	79	76	100	110	116	137	122	115	132	106	101	1.278
MT	2	0	1	2	0	0	0	4	1	5	1	1	17
NL**	95	66	93	80	76	105	97	100	82	78	87	69	1.028
AT	57	37	51	63	66	59	83	85	79	68	76	44	768
PL	480	307	297	325	410	461	547	569	538	567	483	460	5.444
PT	95	121	93	84	106	99	114	105	115	115	88	112	1.247
FI	50	20	24	19	32	41	44	42	35	24	28	20	379
SE	30	32	38	30	28	43	49	34	41	41	28	46	440
UK	276	230	263	221	258	282	273	276	303	296	327	331	3.336
EU-14	2.601	2.165	2.340	2.328	2.761	2.995	3.349	3.102	2.865	2.950	2.752	2.760	32.968
% by month	7,9%	6,6%	7,1%	7,1%	8,4%	9,1%	10,2%	9,4%	8,7%	8,9%	8,3%	8,4%	100,0%

Source: CARE Database / EC  
Date of query: Oct-2007  
\* Data 2004  
\*\* Data 2003  
\*\*\* Data 2002

\* IT: 2004, IE & NL: 2003, LU: 2002



**Figure 23: Total number of fatalities by day of week and person class (EU-18), 2005\***



**Table 40: Total number of fatalities by day of week by country, 2005**

	Mon	Tue	Wed	Thu	Fri	Sat	Sun	Total
BE	156	100	154	142	155	200	182	1.089
DK	46	41	32	50	69	54	39	331
EE	16	14	19	28	31	33	28	169
EL	228	205	196	220	254	290	265	1.658
ES	613	520	552	573	644	780	760	4.442
FR	642	620	706	656	859	939	896	5.318
IE**	50	30	30	44	54	59	70	337
IT*	680	663	634	721	781	1.039	1.107	5.625
LU***	9	5	9	7	11	16	5	62
HU	188	166	160	171	195	246	152	1.278
MT	1	1	2	1	0	8	4	17
NL**	151	121	129	134	171	175	147	1.028
AT	89	120	102	104	120	124	109	768
PL	696	656	654	735	879	897	927	5.444
PT	173	154	164	146	177	233	201	1.247
FI	53	46	45	58	73	70	34	379
SE	60	53	63	70	78	69	47	440
UK	425	402	441	422	502	583	561	3.336
<b>EU-18</b>	<b>4.277</b>	<b>3.917</b>	<b>4.092</b>	<b>4.282</b>	<b>5.053</b>	<b>5.815</b>	<b>5.534</b>	<b>32.968</b>
<b>% by day</b>	<b>13,0%</b>	<b>11,9%</b>	<b>12,4%</b>	<b>13,0%</b>	<b>15,3%</b>	<b>17,6%</b>	<b>16,8%</b>	<b>100,0%</b>

Source: CARE Database / EC  
Date of query: Oct-2007  
\* Data 2004  
\*\* Data 2003  
\*\*\* Data 2002

\* IT: 2004, IE & NL: 2003, LU: 2002



**Table 41: Number of fatalities by day of week by country, 2005 (drivers)**

	Mon	Tue	Wed	Thu	Fri	Sat	Sun	Total
BE	124	76	117	103	114	143	131	808
DK	37	25	27	34	47	37	26	233
EE	9	7	8	15	11	17	15	82
EL	145	126	125	151	172	179	155	1.053
ES	385	322	352	366	388	486	440	2.739
FR	452	433	508	472	616	621	597	3.699
IE**	29	20	18	29	25	38	39	198
IT*	444	471	432	478	543	696	675	3.739
LU***	6	4	7	5	7	8	4	40
HU	108	104	88	98	93	127	79	698
MT	0	1	0	1	0	1	2	6
NL**	115	93	98	96	133	131	101	767
AT	65	87	82	72	82	85	71	544
PL	331	313	297	335	393	408	395	2.472
PT	105	93	101	92	105	140	131	768
FI	29	32	32	42	51	47	27	260
SE	43	32	48	54	51	45	27	300
UK	264	249	270	257	294	346	322	2.002
EU-18	2.691	2.488	2.610	2.700	3.125	3.555	3.237	20.408
% by day	13,2%	12,2%	12,8%	13,2%	15,3%	17,4%	15,9%	100,0%

Source: CARE Database / EC  
Date of query: Oct-2007  
\* Data 2004  
\*\* Data 2003  
\*\*\* Data 2002

**Table 42: Number of fatalities by day of week by country 2005 (passengers)**

	Mon	Tue	Wed	Thu	Fri	Sat	Sun	Total
BE	18	13	12	23	25	48	34	173
DK	6	6	2	11	10	10	8	53
EE	2	2	5	6	11	7	6	39
EL	46	45	35	36	46	83	80	371
ES	134	102	109	108	142	198	230	1.023
FR	104	96	103	101	131	223	226	984
IE**	10	7	5	9	12	15	17	75
IT*	127	96	95	145	135	240	326	1.164
LU***	1	0	2	1	3	8	0	14
HU	40	26	33	31	42	78	42	293
MT	0	0	0	0	0	6	0	7
NL**	26	15	12	27	20	29	34	163
AT	14	13	8	20	24	24	24	127
PL	129	125	132	148	183	210	289	1.216
PT	38	33	31	25	34	57	47	264
FI	17	6	5	6	17	18	5	74
SE	9	11	8	12	19	17	12	88
UK	82	57	67	63	85	140	141	635
EU-18	803	653	664	772	940	1.411	1.520	6.764
% by day	11,9%	9,7%	9,8%	11,4%	13,9%	20,9%	22,5%	100,0%

Source: CARE Database / EC  
Date of query: Oct-2007  
\* Data 2004  
\*\* Data 2003  
\*\*\* Data 2002

**Table 43: Number of fatalities by day of week by country, 2005 (pedestrians)**

	Mon	Tue	Wed	Thu	Fri	Sat	Sun	Total
BE	14	11	25	16	16	9	17	108
DK	3	10	3	5	11	7	5	44
EE	5	5	6	7	9	8	6	46
EL	37	34	36	33	36	28	30	234
ES	94	96	91	98	113	96	91	680
FR	86	91	95	83	112	95	73	635
IE**	11	3	7	6	17	6	14	64
IT*	105	94	106	97	102	102	104	710
LU***	2	1	0	1	1	0	1	6
HU	40	36	39	42	60	41	31	289
MT	1	0	2	0	0	1	2	6
NL**	10	13	19	11	18	15	11	97
AT	10	20	12	12	14	15	14	97
PL	236	218	225	252	303	279	243	1.756
PT	31	27	32	29	38	35	23	214
FI	7	8	8	10	5	5	2	45
SE	8	10	7	4	6	7	8	50
UK	79	96	104	102	123	97	98	699
EU-18	779	773	817	808	984	847	773	5.780
% by day	13,5%	13,4%	14,1%	14,0%	17,0%	14,6%	13,4%	100,0%

Source: CARE Database / EC

Date of query: Oct-2007

\* Data 2004

\*\* Data 2003

\*\*\* Data 2002

**Table 44: Number of fatalities by hour of day by country, 2005**

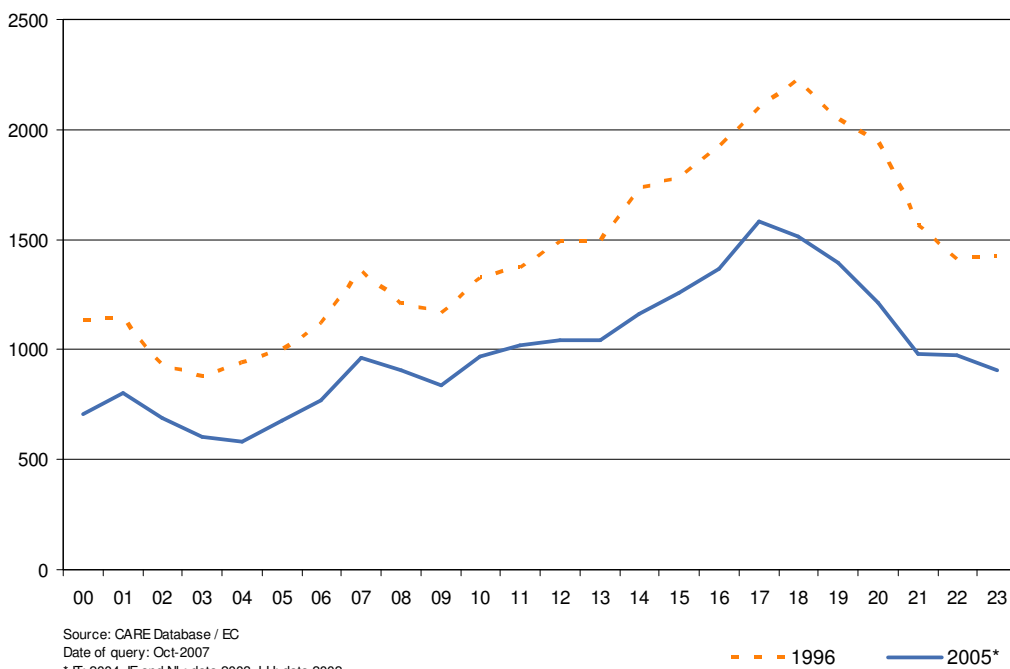
	0	1	2	3	4	5	6	7	8	9	10	11	12
BE	43	47	36	35	32	48	30	55	21	29	36	25	30
DK	10	7	6	10	9	11	15	8	3	16	12	14	15
EE	5	7	3	5	2	1	5	8	6	8	6	6	3
EL	61	57	61	58	71	60	81	92	53	60	67	52	59
ES	114	117	116	95	88	130	166	212	182	178	191	188	229
FR	160	158	140	105	147	166	172	236	214	191	220	222	209
IE**	21	19	10	16	13	5	6	14	8	6	9	14	22
IT*	137	255	185	204	158	161	186	167	222	196	225	254	226
LU***	5	2	3	3	4	0	3	2	3	1	1	0	1
HU	31	28	26	24	24	46	48	59	41	37	62	55	49
MT	5	1	1	1	0	0	0	0	0	1	0	2	0
NL**	25	25	19	19	15	27	29	52	41	33	56	50	44
AT	13	21	25	17	21	30	27	29	36	30	35	38	31
PL	73	187	137	132	108	161	212	204	183	202	177	192	221
PT	40	31	40	38	38	31	44	47	39	32	46	66	41
FI	13	7	11	10	5	2	12	16	10	11	24	13	18
SE	9	12	12	7	8	5	13	19	15	22	13	17	33
UK	135	108	101	55	50	66	78	122	123	104	126	130	161
EU-18	900	1.089	932	834	793	949	1.127	1.342	1.200	1.157	1.305	1.339	1.393
% by hour	2,7%	3,3%	2,8%	2,5%	2,4%	2,9%	3,4%	4,1%	3,6%	3,5%	4,0%	4,1%	4,2%

	13	14	15	16	17	18	19	20	21	22	23	Total
BE	45	45	58	66	74	63	63	37	50	66	53	1.087
DK	19	17	21	21	19	18	22	18	18	10	12	331
EE	4	7	12	6	17	16	9	11	7	6	9	169
EL	75	77	75	87	71	107	82	67	60	62	63	1.658
ES	248	225	183	195	255	258	254	223	207	213	174	4.442
FR	193	286	283	338	378	373	307	269	202	183	166	5.318
IE**	7	10	7	22	25	12	20	24	13	16	11	330
IT*	213	215	300	319	369	371	326	274	216	195	207	5.581
LU***	3	4	6	2	4	3	3	2	2	3	2	62
HU	54	55	85	86	93	80	84	65	75	51	20	1.278
MT	0	1	0	1	1	1	0	0	2	0	0	17
NL**	45	66	84	66	86	61	38	38	35	42	32	1.028
AT	40	26	39	47	49	53	44	47	22	19	29	768
PL	246	243	257	306	397	394	303	365	256	298	190	5.444
PT	43	48	76	66	79	89	92	76	48	41	57	1.247
FI	26	27	29	35	30	9	24	10	10	19	8	379
SE	37	39	25	26	21	24	20	19	16	12	16	440
UK	149	179	174	199	225	193	205	185	151	173	144	3.336
EU-18	1.448	1.570	1.715	1.888	2.193	2.125	1.896	1.730	1.390	1.409	1.193	32.915
% by hour	4,4%	4,8%	5,2%	5,7%	6,7%	6,5%	5,8%	5,3%	4,2%	4,3%	3,6%	100,0%

Source: CARE Database / EC  
Date of query: Oct-2007  
\* Data 2004  
\*\* Data 2003  
\*\*\* Data 2002



**Figure 24: Number of fatalities by hour of day (EU-14), 1996 and 2005**



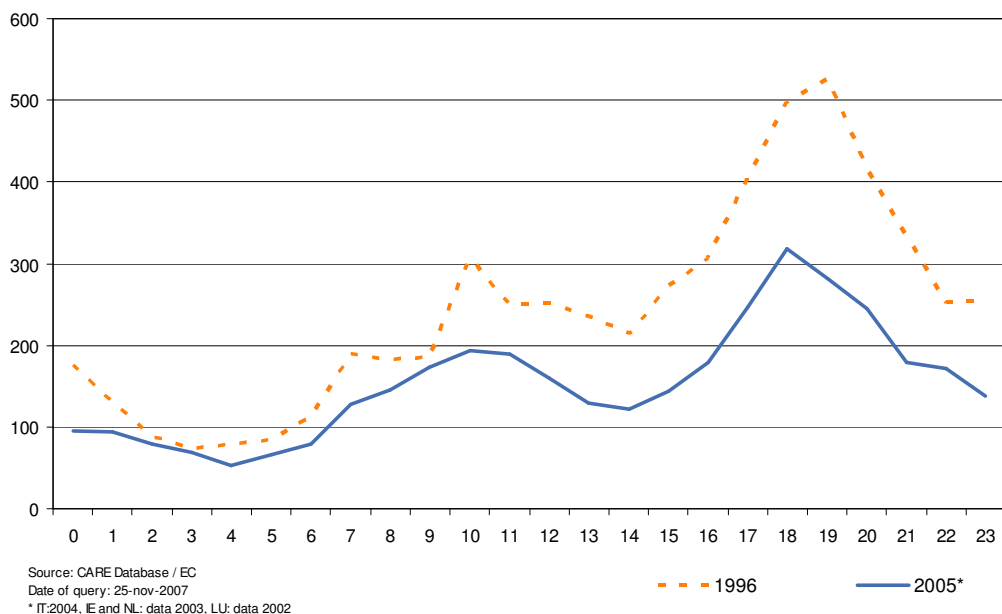
**Table 45: Number of pedestrian fatalities by hour of day by country, 2005**

	0	1	2	3	4	5	6	7	8	9	10	11	12
BE	2	2	1	1	2	0	3	3	2	7	5	4	3
DK	2	1	3	2	1	3	0	0	0	1	4	0	1
EE	3	0	1	0	1	1	1	4	0	1	0	0	0
EL	6	7	2	3	2	5	6	17	8	5	16	7	9
ES	16	18	10	19	7	20	22	25	27	29	35	32	34
FR	19	11	11	8	16	15	15	28	33	38	35	43	25
IE**	2	7	3	2	1	0	2	3	0	3	4	2	6
IT*	13	18	13	11	7	9	9	24	36	35	37	42	29
LU***	0	0	0	0	1	0	0	0	1	0	0	0	0
HU	6	3	3	9	5	10	14	10	6	8	4	11	7
MT	0	1	0	0	0	0	0	0	0	1	0	0	0
NL**	4	1	2	0	0	3	0	2	3	3	8	4	7
AT	1	5	4	2	4	3	2	3	3	3	2	6	4
PL	25	61	34	19	23	28	45	38	44	38	39	43	59
PT	6	3	2	3	1	5	9	6	10	9	8	15	10
FI	1	1	1	2	1	0	1	4	1	1	5	2	0
SE	1	2	0	0	2	0	1	2	1	6	1	5	5
UK	22	17	27	15	8	4	9	11	20	32	33	27	26
EU-18	129	158	118	97	82	106	139	180	196	220	236	243	225
% by hour	2,2%	2,7%	2,0%	1,7%	1,4%	1,8%	2,4%	3,1%	3,4%	3,8%	4,1%	4,2%	3,9%

	13	14	15	16	17	18	19	20	21	22	23	Total
BE	2	5	5	6	11	14	12	5	6	5	2	108
DK	3	0	2	2	6	1	4	2	2	2	2	44
EE	0	1	0	2	8	4	5	4	3	3	4	46
EL	12	10	12	7	6	27	15	12	15	14	11	234
ES	29	20	17	20	31	36	52	57	44	43	36	680
FR	15	26	27	35	52	68	40	29	15	17	14	635
IE**	2	2	2	4	6	1	2	4	4	0	1	63
IT*	15	17	24	34	46	76	72	57	30	30	22	706
LU***	1	0	2	0	0	0	1	0	0	0	0	6
HU	9	10	10	14	30	22	27	27	26	14	4	289
MT	0	0	0	0	1	1	0	0	2	0	0	6
NL**	3	5	6	4	15	7	4	6	3	6	1	97
AT	2	2	5	6	8	9	5	6	5	4	3	97
PL	49	53	53	112	165	183	143	177	120	124	81	1.756
PT	5	5	6	7	8	24	18	23	15	10	7	214
FI	5	3	3	5	2	2	1	2	1	1	0	45
SE	2	2	0	8	1	3	1	1	2	1	3	50
UK	33	25	33	42	55	51	55	41	37	39	37	699
EU-18	187	186	206	308	451	529	457	453	330	313	228	5.775
% by hour	3,2%	3,2%	3,6%	5,3%	7,8%	9,2%	7,9%	7,8%	5,7%	5,4%	3,9%	100,0%

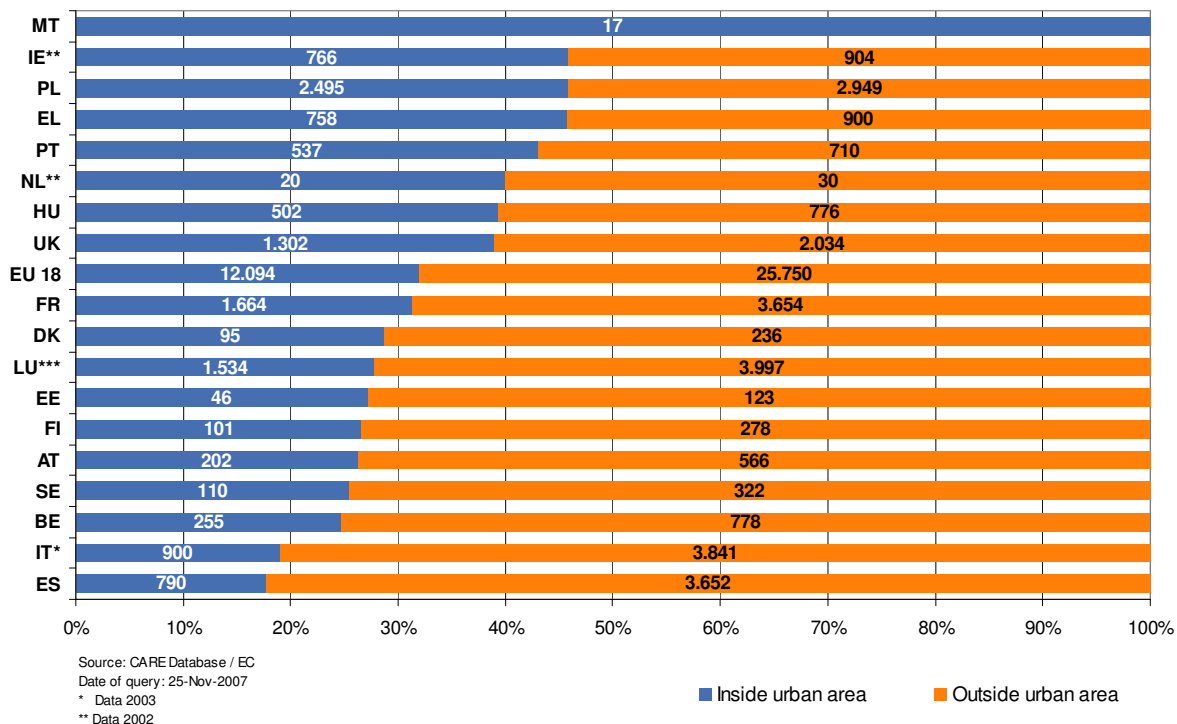
Source: CARE Database / EC  
Date of query: Oct-2007  
\* Data 2004  
\*\* Data 2003  
\*\*\* Data 2002

Figure 25: Number of pedestrian fatalities by hour of day (EU-14), 1996 and 2005



#### 4.3.2 Type of area/road

Figure 26: Number of fatalities by type of area by country, 2005

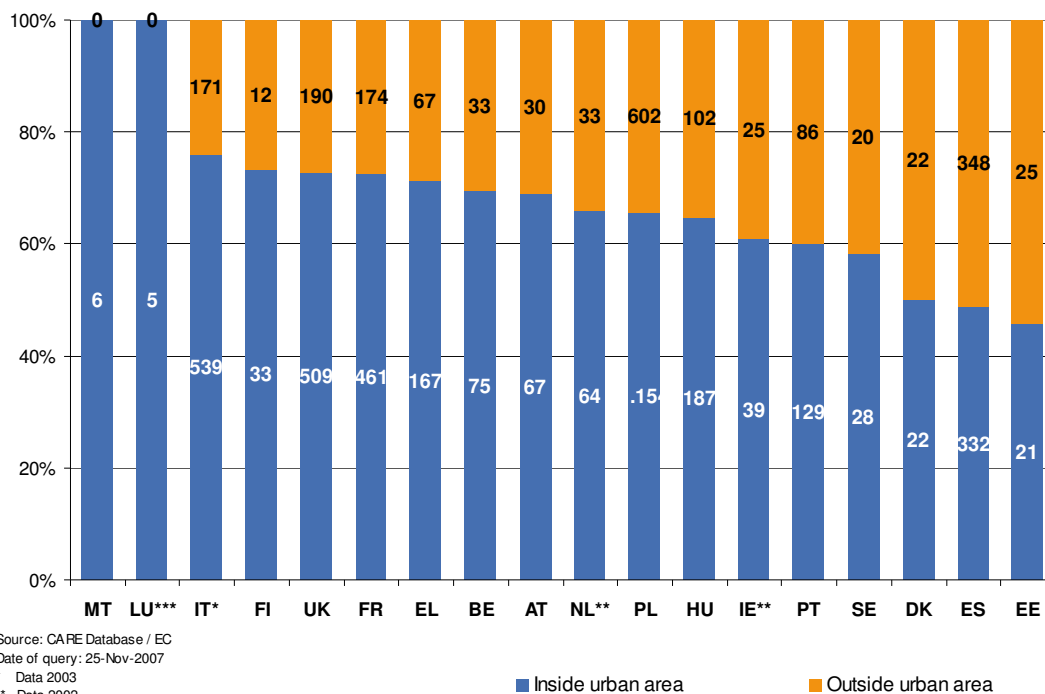


**Table 46: Number of fatalities by type of area and road by country, 2005**

	Inside urban area	Outside urban area			Total
		Motorway	Non-Motorway	Unknown	
BE	255	161	617	0	1.089
DK	95	31	205	0	331
EE	46	0	123	0	169
EL	758	111	230	559	1.658
ES	790	221	3.431	0	4.442
FR	1.664	323	3.331	0	5.318
IE**	89	8	240	0	337
IT*	2.310	648	2.667	0	5.625
LU***	20	0	30	0	62
HU	502	47	729	0	1.278
MT	17	0	0	0	17
NL**	346	151	531	0	1.028
AT	202	89	477	0	768
PL	2.495	32	2.917	0	5.444
PT	537	98	612	0	1.247
FI	101	10	268	0	379
SE	110	20	302	0	440
UK	1.302	203	1.681	150	3.336
<b>EU-18</b>	<b>11.639</b>	<b>2.153</b>	<b>18.391</b>	<b>709</b>	<b>32.968</b>
<b>% by road type</b>	<b>35,3%</b>	<b>6,5%</b>	<b>55,8%</b>	<b>2,2%</b>	<b>100,0%</b>

Source: CARE Database / EC  
Date of query: 25-Nov-2007  
\* Data 2004  
\*\* Data 2003  
\*\* Data 2002

**Figure 27: Number of pedestrian fatalities by type of area by country, 2005**



Source: CARE Database / EC  
Date of query: 25-Nov-2007  
\* Data 2003  
\*\* Data 2002



**Table 47: Number of pedestrian fatalities by type of area and road by country, 2005**

	Inside urban areas	Outside urban area			Total
		Motorway	Non-Motorway	Unknown	
BE	75	2	31	0	108
DK	22	4	18	0	44
EE	21	0	25	0	46
EL	167	13	16	38	234
ES	332	28	320	0	680
FR	461	25	149	0	635
IE**	39	0	25	0	64
IT*	539	31	140	0	710
LU***	5	0	1	0	6
HU	187	6	96	0	289
MT	6	0	0	0	6
NL**	64	7	26	0	97
AT	67	6	24	0	97
PL	1.154	7	595	0	1.756
PT	129	9	76	0	214
FI	33	2	10	0	45
SE	28	2	18	0	48
UK	509	30	148	12	699
EU-18	3.838	172	1.718	50	5.778
% by road type	66,4%	3,0%	29,7%	0,9%	100,0%

Source: CARE Database / EC

Date of query: Oct 2007

\* Data 2004

\*\* Data 2003

\*\*\* Data 2002

### 4.3.3 Type of junction

**Table 48: Number of fatalities by type of junction by country, 2005**

	Not at junction	At junction					Not defined	Total
		Crossroad	Level crossing	T or Y junction	Other junction	Roundabout		
BE	879	0	3	0	197	10	0	1.089
DK	237	49	2	1	41	1	0	331
EE	119	12	0	10	8	0	20	169
EL	1.540	0	0	0	0	0	118	1.658
ES	3.692	293	0	286	103	68	0	4.442
FR	4.654	278	16	165	149	56	0	5.318
IE**	0	16	0	48	5	4	264	337
IT*	3.984	774	7	0	789	71	0	5.625
LU***	54	6	0	2	0	0	0	62
HU	1.018	229	17	0	10	4	0	1.278
MT	0	0	0	0	0	0	17	17
NL**	704	161	29	122	0	9	3	1.028
AT	413	90	25	33	0	0	207	768
PL	4.546	892	0	0	0	6	0	5.444
PT	799	75	5	97	10	9	252	1.247
FI	300	0	0	0	73	0	6	379
SE	10	83	0	0	13	2	332	440
UK	2.184	171	0	658	244	79	0	3.336
EU-18	25.133			6.616			1.219	32.968
% by junction	76,2%			20,1%			3,7%	100,0%

Source: CARE Database / EC

Date of query: 24-Nov-2007

\* Data 2004

\*\* Data 2003

\*\*\* Data 2002

**Table 49: Number of pedestrian fatalities by type of junction by country, 2005**

	Not at junction	At junction					Not defined	Total
		Crossroad	Level crossing	T or Y junction	Other junction	Roundabout		
BE	84	0	1	0	22	1	0	108
DK	33	5	0	0	6	0	0	44
EE	35	4	0	1	1	0	5	46
EL	203	0	0	0	0	0	31	234
ES	537	61	0	46	29	7	0	680
FR	556	30	1	17	23	8	0	635
IE**	0	2	0	15	1	3	43	64
IT*	567	71	0	0	68	4	0	710
LU***	4	2	0	0	0	0	0	6
HU	235	49	1	0	3	1	0	289
MT	0	0	0	0	0	0	6	6
NL**	71	15	2	8	0	1	0	97
AT	50	14	6	4	0	0	23	97
PL	1.437	316	0	0	0	3	0	1.756
PT	136	16	0	14	2	2	44	214
FI	32	0	0	0	10	0	3	45
SE	1	16	0	0	1	1	31	50
UK	395	43	0	198	46	17	0	699
<b>EU-18</b>	<b>4.376</b>	<b>1.218</b>					<b>186</b>	<b>5.780</b>
<b>% by junction</b>	<b>75,7%</b>	<b>21,1%</b>					<b>3,2%</b>	<b>100,0%</b>

Source: CARE Database / EC  
 Date of query: Oct-2007  
 \* Data 2004  
 \*\* Data 2003  
 \*\*\* Data 2002

### 4.3.4 Weather conditions

Figure 28: Number of fatalities by weather conditions (EU-14), 2005<sup>3</sup>

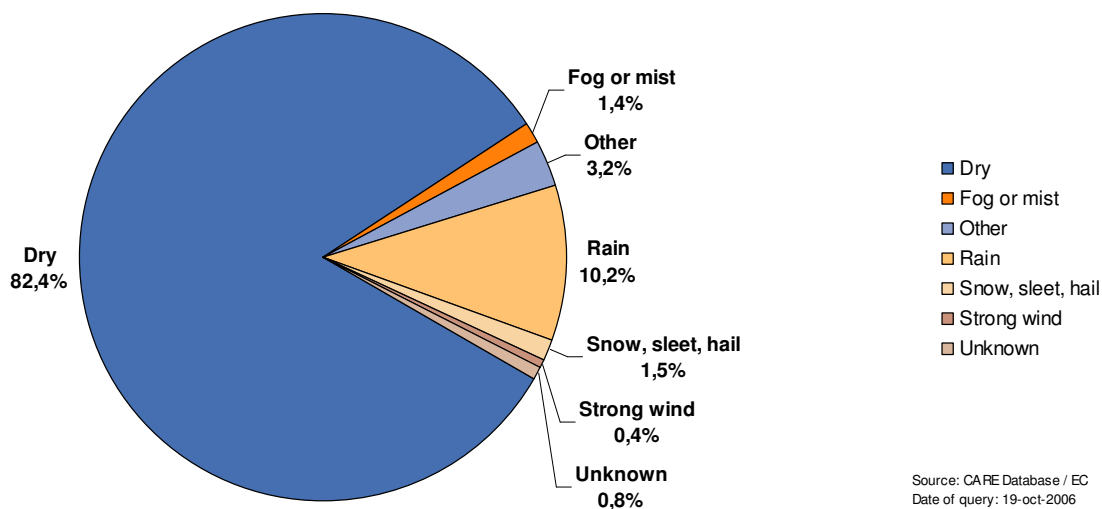


Table 50: Number of fatalities by weather conditions by country, 2005

	Dry	Fog or mist	Other	Rain	Snow, sleet, hail	Strong wind	Total
BE	848	7	2	109	23	5	1.089
DK	281	8	0	26	9	4	331
EE	139	1	0	11	14	2	169
EL	1.419	2	34	186	4	13	1.658
ES	3.830	67	85	413	11	35	4.442
FR	4.515	102	85	530	64	22	5.318
IE**	262	10	0	47	4	2	337
IT*	4.067	56	804	663	23	12	5.625
LU***	21	0	0	18	0	0	62
HU	1.117	31	0	104	23	3	1.278
MT	12	0	0	4	0	1	17
NL**	909	16	0	75	8	3	1.028
AT	651	10	0	79	25	3	768
PL	4.572	88	0	530	225	29	5.444
PT	1.075	25	0	129	1	0	1.247
FI	304	1	0	29	30	0	379
SE	338	16	0	44	15	0	440
UK	2.795	28	60	362	23	0	3.336
EU-18	27.155	468	1.070	3.359	502	134	32.968
% by weather	82,4%	1,4%	3,2%	10,2%	1,5%	0,4%	100,0%

Source: CARE Database / EC  
Date of query: 19-oct-2006  
\* Data 2004  
\*\* Data 2003  
\*\*\* Data 2002

<sup>3</sup> IT: 2004, IE & NL: 2003, LU: 2002



## 5 Fatal accidents 2005

### 5.1 Various periods of time (month, day of week, hour of day)

Table 51: Number of fatal accidents<sup>1</sup> by month by country, 2005

	Jan	Feb	Mar	Apr	May	Jun	Jul	Aug	Sep	Oct	Nov	Dec	Total
BE	92	66	73	85	91	109	88	71	91	86	74	71	997
DK	27	26	20	28	31	18	31	28	20	31	18	27	305
EE	16	7	7	5	13	14	10	13	18	16	15	16	150
EL	102	94	107	91	130	157	147	157	121	122	125	129	1.482
ES	268	259	289	262	273	307	336	306	275	280	246	276	3.377
FR	379	303	358	326	420	447	549	433	409	437	375	421	4.857
IE**	17	21	30	21	32	31	25	24	17	32	30	21	301
IT*	365	322	351	390	478	483	522	478	422	407	448	416	5.082
LU***	2	4	1	3	3	7	3	6	4	7	7	5	52
HU	79	67	72	86	97	103	121	101	102	122	96	93	1.139
MT	2	0	1	2	0	0	0	3	1	1	1	1	12
NL**	89	59	86	66	71	98	85	86	78	73	83	66	940
AT	55	34	46	61	60	56	74	80	73	65	66	42	712
PL	437	281	257	289	354	416	482	511	474	521	435	421	4.878
PT	76	88	71	66	83	80	93	88	86	93	72	92	988
FI	42	18	23	17	32	37	37	40	31	21	25	20	343
SE	30	30	31	27	25	39	46	33	39	38	28	40	406
UK	250	205	245	207	235	257	250	252	277	267	301	294	3.040
EU-18	2.328	1.884	2.068	2.032	2.428	2.659	2.899	2.710	2.538	2.619	2.445	2.451	29.061
% by month	8,0%	6,5%	7,1%	7,0%	8,4%	9,1%	10%	9,3%	8,7%	9,0%	8,4%	8,4%	100,0%

Source: CARE Database / EC  
Date of query: 17-nov-2006

\* Data 2004

\*\* Data 2003

\*\*\* Data 2002

Table 52: Number of fatal accidents<sup>1</sup> by day of week by country, 2005

	Mon	Tue	Wed	Thu	Fri	Sat	Sun	Total
BE	147	94	146	129	140	176	165	997
DK	44	36	32	44	64	50	35	305
EE	14	13	17	26	26	31	23	150
EL	210	183	182	192	230	244	241	1.482
ES	463	403	410	454	490	585	572	3.377
FR	595	576	658	611	796	831	790	4.857
IE**	42	28	28	39	50	52	62	301
IT*	626	624	590	665	716	914	947	5.082
LU***	9	5	7	6	9	11	5	52
HU	170	148	147	157	174	202	141	1.139
MT	1	1	2	1	0	4	3	12
NL**	138	114	121	112	161	159	135	940
AT	85	111	97	94	111	113	101	712
PL	635	597	609	669	784	799	785	4.878
PT	136	126	131	117	141	179	158	988
FI	45	42	41	54	60	67	34	343
SE	55	49	61	64	71	63	43	406
UK	390	381	402	394	462	516	495	3.040
EU-18	3.805	3.531	3.681	3.828	4.485	4.996	4.735	29.061
% by day	13,1%	12,2%	12,7%	13,2%	15,4%	17,2%	16,3%	100,0%

Source: CARE Database / EC  
Date of query: 17-nov-2006

\* Data 2004

\*\* Data 2003

\*\*\* Data 2002

<sup>1</sup> Note that numbers have not been corrected for 30 day definition for EL, ES, FR, IT and PT

**Table 53: Number of fatal accidents<sup>1</sup> by hour of day by country, 2005**

	0	1	2	3	4	5	6	7	8	9	10	11	12
BE	39	45	35	34	28	42	26	48	21	28	32	24	28
DK	10	7	6	9	7	10	15	8	3	16	10	14	15
EE	5	6	2	4	2	1	4	6	6	6	5	5	3
EL	61	53	52	51	63	52	71	78	47	54	59	51	52
ES	86	90	80	74	66	106	130	172	141	141	150	152	165
FR	150	143	123	91	126	137	155	215	202	172	201	207	195
IE**	16	18	10	13	11	5	5	11	8	6	8	14	19
IT*	116	227	160	171	125	146	148	156	207	187	213	229	208
LU***	3	2	2	3	4	0	1	1	3	1	1	0	1
HU	24	26	18	24	22	44	45	53	36	34	50	46	46
MT	1	1	1	1	0	0	0	0	0	1	0	2	0
NL**	22	23	19	18	14	23	26	50	41	29	53	41	42
AT	13	19	24	15	20	28	23	28	36	26	32	37	31
PL	68	164	109	105	96	135	174	174	161	173	155	169	202
PT	31	23	27	32	28	25	35	39	32	28	37	48	35
FI	11	7	11	10	5	2	11	16	10	9	23	13	15
SE	7	11	11	6	7	5	12	17	14	20	12	17	30
UK	121	93	86	53	38	57	75	115	116	99	120	118	151
EU-18	784	958	776	714	662	818	956	1.187	1.084	1.030	1.161	1.187	1.238
% by hour	2,7%	3,3%	2,7%	2,5%	2,3%	2,8%	3,3%	4,1%	3,7%	3,5%	4,0%	4,1%	4,3%

	13	14	15	16	17	18	19	20	21	22	23	Total
BE	38	40	55	63	70	59	61	34	48	52	45	997
DK	19	17	18	19	18	15	19	14	15	10	11	305
EE	4	7	9	6	14	13	9	11	7	6	9	150
EL	67	66	68	74	66	94	70	63	53	59	58	1.482
ES	184	153	128	146	191	194	189	173	165	170	131	3.377
FR	175	258	268	308	347	350	282	252	187	160	153	4.857
IE**	6	9	7	22	23	9	17	22	10	14	11	301
IT*	197	192	272	290	340	337	302	255	197	179	189	5.082
LU***	3	4	4	2	4	3	3	2	2	1	2	52
HU	50	50	76	74	85	74	78	58	65	42	19	1.139
MT	0	1	0	1	1	1	0	0	1	0	0	12
NL**	39	61	79	60	81	55	35	34	32	36	27	940
AT	33	25	38	44	47	51	39	40	20	17	26	712
PL	214	220	234	280	367	365	291	338	241	269	174	4.878
PT	32	38	63	45	60	74	70	65	40	36	45	988
FI	25	26	27	31	25	8	22	9	8	12	7	343
SE	37	35	22	24	20	20	19	16	16	12	16	406
UK	142	158	162	185	212	176	185	160	133	157	128	3.040
EU-18	1.265	1.360	1.530	1.674	1.971	1.898	1.691	1.546	1.240	1.232	1.051	29.061
% by hour	4,4%	4,7%	5,3%	5,8%	6,8%	6,5%	5,8%	5,3%	4,3%	4,2%	3,6%	100,0%

Source: CARE Database / EC

Date of query: 17-nov-2006

\* Data 2004

\*\* Data 2003

\*\*\* Data 2002

<sup>1</sup> Note that numbers have not been corrected for 30 day definition for EL, ES, FR, IT and PT

## 5.2 Type of area / road

Table 54: Number of fatal accidents<sup>1</sup> by type of area and road by country, 2005

	Inside urban area	Outside urban area			Total
		Motorway	Non-motorway	Unknown	
BE	243	141	559	0	997
DK	89	25	191	0	305
EE	42	0	108	0	150
EL	705	101	179	497	1.482
ES	564	162	2.651	0	3.377
FR	1.569	279	3.009	0	4.857
IE**	83	7	211	0	301
IT*	2.212	534	2.336	0	5.082
LU***	17	0	27	0	52
HU	481	40	618	0	1.139
MT	12	0	0	0	12
NL**	335	129	476	0	940
AT	195	71	446	0	712
PL	2.354	24	2.500	0	4.878
PT	453	72	463	0	988
FI	99	9	235	0	343
SE	107	19	272	0	406
UK	1.232	175	1.492	141	3.040
EU-18	10.792	1.788	15.773	638	29.061
% by road type	37,1%	6,2%	54,3%	2,2%	100,0%

Source: CARE Database / EC  
 Date of query: 17-nov-2006  
 \* Data 2004  
 \*\* Data 2003  
 \*\*\* Data 2002

<sup>1</sup> Note that numbers have not been corrected for 30 day definition for EL, ES, FR, IT and PT

## 5.3 Type of junction

**Table 55: Number of fatal accidents<sup>1</sup> by type of junction by country, 2005**

	Not at junction	At junction					Not defined	Total
		crossroad	level crossing	other junction	roundabout	t or y junction		
BE	796	0	3	188	10	0	0	997
DK	217	44	2	40	1	1	0	305
EE	104	10	0	8	0	8	20	150
EL	1.371	0	0	0	0	0	111	1.482
ES	2.824	216	0	77	49	211	0	3.377
FR	4.250	250	15	132	53	157	0	4.857
IE**	0	15	0	5	4	39	238	301
IT*	3.591	706	5	715	65	0	0	5.082
LU***	45	5	0	0	0	2	0	52
HU	896	215	14	10	4	0	0	1.139
MT	0	0	0	0	0	0	12	12
NL**	635	150	25	0	8	119	3	940
AT	379	84	23	0	0	33	193	712
PL	4.064	808	0	0	6	0	0	4.878
PT	625	62	4	9	7	78	203	988
FI	267	0	0	70	0	0	6	343
SE	10	78	0	13	2	0	303	406
UK	1.950	162	0	225	79	624	0	3.040
EU-18	22.024	2.805	91	1.492	288	1.272	1.089	29.061
% by road type	75,8%	9,7%	0,3%	5,1%	1,0%	4,4%	3,7%	100,0%

Source: CARE Database / EC  
Date of query: 17-nov-2006  
\* Data 2004  
\*\* Data 2003

<sup>1</sup> Note that numbers have not been corrected for 30 day definition for EL, ES, FR, IT and PT

## 5.4 Weather conditions

Table 56: Number of fatal accidents<sup>1</sup> by weather conditions by country, 2005

	Dry	Fog or mist	Other	Rain	Snow, sleet, hail	Strong wind	Total
BE	771	7	2	101	21	4	997
DK	260	6	0	24	9	4	305
EE	126	1	0	11	9	1	150
EL	1.278	2	28	159	3	12	1.482
ES	2.920	50	70	306	5	26	3.377
FR	4.127	94	80	480	57	19	4.857
IE**	234	9	0	43	4	2	301
IT*	3.683	49	730	590	22	8	5.082
LU***	21	0	0	14	0	0	52
HU	999	29	0	87	21	3	1.139
MT	7	0	0	4	0	1	12
NL**	835	15	0	67	7	3	940
AT	604	9	0	71	25	3	712
PL	4.101	80	0	475	196	26	4.878
PT	855	20	0	97	1	0	988
FI	280	1	0	28	21	0	343
SE	313	11	0	42	14	0	406
UK	2.546	27	53	333	21	0	3.040
EU-18	23.960	410	963	2.932	436	112	29.061
% by weather	82,4%	1,4%	3,3%	10,1%	1,5%	0,4%	100,0%

Source: CARE Database / EC

Date of query: 17-nov-2006

\* Data 2004

\*\* Data 2003

\*\*\* Data 2002

<sup>1</sup> Note that numbers have not been corrected for 30 day definition for EL, ES, FR, IT and PT



## 6 Glossary

The CARE glossary provides short definitions for variables used in the Annual Statistical Report, and includes short definitions of CARE common values.

The glossary has two components:

- a) A **definition** of the common value
- b) The **availability** of the common value in the data file for each Member State.

### ACCIDENT

#### *ACCIDENT*

Definition: Occurs on a public road. Occurs on a private road to which the public has right of access (except BE, NL, PT). Involves at least one moving vehicle (except UK, PT). Involves at least one injured or killed person. Is reported by the police. Self reporting possible (BE, UK, EL, IT, IE). Self reporting not possible (DK, FI, NL, AT, PT). Confirmed suicides excluded (BE, UK, IE, NL, AT, DK, PT). Confirmed suicides included (ES, IT, LU).

Note: The variation in the groups of road and the coverage of the injury categories included in injury accidents, together with differences in the level of self reported accidents, will lead to significant variations in the number of injury accidents reported, and their reporting rate, between Member States.

#### *FATAL ACCIDENT*

Definition: Accident with at least one killed person regardless the injury severity of any other involved persons.

Note: See "killed" definition from Injury Severity defined in Person type item (Death within 30 days of a road accident [UN/ECE Geneva 1995 – Statistics of Road Traffic Accidents in Europe and North America], except AT [3 days before 1992], ES [24 hours in CARE; 24 hours before 1993 in publication], FR [6 days], GR [24 hours], IT [7 days], PT [24 hours]. Suicide not included [except DK, ES, FR]. Natural death not included [except LU, SE]).

Data availability: All countries

### TIME TYPE ITEMS

#### *MONTH*

Definition: Calendar month

Data availability: All countries (except DK)

#### *HOUR*

Definition: Period of 60 minutes. Rounded down to whole hours (except EL, ES, IT: rounded to nearest hour).

Note: Winter time is:

- GMT from November to March (DE from 1996 onwards, GB, IE, NI, PT)
- GMT +1 hour from October to March (BE, AT, DK prior to 1996, DK, ES, FR, IT, LU, NL, SE)
- GMT +2 hours from October to March (EL, FI).

Summer time is one hour ahead of winter time:

- GMT +1 hour from April to October (DK from 1996 onwards, GB, IE, NI, PT)
- GMT +2 hours from April to September (AT, BE, DK prior to 1996, DK, ES, FR, IT, LU, NL, SE)
- GMT +3 hours from April to September (EL, FI)

For PT, unknown hour coded as '12' during daytime and '0' during night time

Data availability: All countries (except DK)

### **DAY OF WEEK**

Definition: 24 hour day within 7 day week.

Note: Data calculated by the CARE system from the date of accident, where data is not available in national files (AT from 1992 onwards, BE, FR prior to 1993, PT, SE).

Data availability: All countries.

## **PERSON CLASS**

### **DRIVER**

Definition: Person driving or riding any motorised vehicle or pedal cycle. Person herding animals is not a driver (except BE, AT). Learner driver is a driver (except ES, PT). Learner driver is a driver during a driving test, but not in a driving lesson (DK). Driving instructor is not a driver (except ES, PT). Driving instructor is a driver during a driving lesson, but not during a driving test (DK).

Note: Uninjured drivers are included in the database (except GB, NI, NL: implicitly included in vehicle records only). Data on driving instructors and learner drivers collected separately from 1993 onwards (SE).

Data availability: All countries.

### **PASSENGER**

Definition: Person on or in a vehicle, who is not the driver. Includes person in the act of boarding or alighting from a vehicle (except DK). Learner driver is not a passenger (except ES, PT). Learner driver is a passenger during a driving lesson, but not during a driving test (DK). Driving instructor is a passenger (except ES, PT). Driving instructor is a passenger during a driving test, but not in a driving lesson (DK).

Note: Uninjured passengers not included in the database (except FR, IE, LU; ES, FI in some cases, AT).

Data availability: All countries.

### **PEDESTRIAN**

Definition: Person on foot. Person pushing or holding bicycle (except DK). Person pushing a pram or pushchair. Person leading or herding an animal (except DK, AT). Person riding a toy cycle on the footway (except AT). Person on roller skates, skateboard or skis (except AT). Does not include person in the act of boarding or alighting from a vehicle (except DK, ES).

Note: Uninjured pedestrians not included in the database (except BE, IE, LU, NL implicitly included in element records; DK, FR, FI, AT, SE if they caused the accident; ES not consistently).

Data availability: All countries.

## **TYPE OF INJURY**

### **INJURED**

Definition: Injured with application of correcting coefficient as stated for the 'Killed at 30 days'. Injured in a road accident. Hospitalisation or medical treatment not necessarily required (except FR). Self declaration of injury (DK if slight; FI, GB, IT, IE, NI). Opinion of the police. Aggregation of the following. injury severities: SERIOUSLY INJURED AS REPORTED + SLIGHTLY INJURED + INJURED - 1 COEFFICIENT

Data availability: All countries

## FATALITIES

**Definition:** Death within 30 days of a road accident (UN/ECE Geneva 1995 – Statistics of Road Traffic Accidents in Europe and North America, annex 1). Suicide not included (except DK, ES, FR). Natural death not included (except LU, SE). Corrective factors have been applied to comply with this international definition for the following countries: EL (24 hours), ES (24 hours in CARE; 24 hours before 1993 in publication), FR (6 days), IT (7 days), AT (3 days before 1992), PT (24 hours).

**Data availability:** All countries.

Member State	Correcting factors		
Greece	$K(30) = K * 1.18$ up to 1995		
Spain	$K(30) = K * 1.3$ up to 1992		
	1993 up to 1996:	Outside urban area	Inside urban area
	Driver	$K(30)=K+SI*2.46\%$	$K(30)=K+SI*1.02\%$
	Passenger	$K(30)=K+SI*2.29\%$	$K(30)=K+SI*0.94\%$
	Pedestrian	$K(30)=K+SI*7.22\%$	$K(30)=K+SI*3.87\%$
	1997 up to 2000:	Outside urban area	Inside urban area
	Driver	$K(30)=K+SI*2.44\%$	$K(30)=K+SI*1.93\%$
	Passenger	$K(30)=K+SI*2.17\%$	$K(30)=K+SI*1.80\%$
	Pedestrian	$K(30)=K+SI*4.76\%$	$K(30)=K+SI*5.71\%$
	2001 up to 2004:	Outside urban area	Inside urban area
	Driver	$K(30)=K+SI*2.41\%$	$K(30)=K+SI*2.17\%$
	Passenger	$K(30)=K+SI*2.24\%$	$K(30)=K+SI*2.15\%$
Pedestrian	$K(30)=K+SI*6.17\%$	$K(30)=K+SI*4.34\%$	
France	$K(30) = K * 1.09$ up to 1993 $K(30) = K * 1.057$ from 1994 onwards		
Italy	$K(30) = K * 1.078$		
Austria	$K(30) = K * 1.12$ only for 1991		
Portugal	$K(30) = K * 1.3$ up to 1997 $K(30) = K * 1.14$ from 1998 onwards		
K: number of persons killed, SI: number of persons seriously injured			

## GENDER

### FEMALE

**Definition:** Determined by the police (except ES, IT, LU, AT, PT: on the basis of identity documents; DK, FI, SE: on the basis of personal ID number).

**Data availability:** All countries.

## **MALE**

Definition: Determined by the police (except ES, IT, LU, AT, PT: on the basis of identity documents; DK, FI, SE: on the basis of personal ID number).

Data availability: All countries.

## **AGE**

### **AGE**

Definition: Length of life of person. Rounded down to whole number of years (except EL, IT, NI: rounded to nearest year).

Note: Age 0 to 1 is exceptionally rounded up (FR, IT, IE, LU, NI, PT). Age over 99 only available for ES, FR (1993 on), NL.

Data availability: All countries.

## **AREA TYPE**

### **INSIDE URBAN AREA**

Definition: Area inside urban area boundary signs (except IE, UK). Includes dual carriageways and national roads. Can include motorways (except DK, EL, IT). Opinion of the police (DK, SE).

Note: Data approximated from speed limit of 40 mph or less (IE, UK).

Data availability: All countries.

### **OUTSIDE URBAN AREA**

Definition: Area outside urban area boundary signs. Opinion of the police (DK, SE). Includes motorways.

Note: Data approximated from speed limit of over 40 mph (IE, UK).

Data availability: All countries.

### **MOTORWAY**

Definition: Public road with dual carriageways, and at least two lanes each way. Entrance and exit signposted. Road with grade separated interchanges. Road with a central barrier or central reservation. No crossing permitted. No stopping permitted unless in an emergency. Entry prohibited for pedestrians, animals, pedal cycles, mopeds, agricultural vehicles; learner drivers (BE, GB, EL, IE, NI, PT). Access restricted to motor vehicles (DK, FI, AT). Minimum speed between 50 km/h and 80 km/h (except FR, UK). Maximum speed between 100 km/h and 130 km/h (except DK recommended 130 km/h).

Data availability: All countries.

## **MODES OF TRANSPORT – VEHICLE GROUP**

### **AGRICULTURAL TRACTOR**

Definition: Motor vehicle for agricultural use, with wheels or caterpillar tracks, with at least two axles. Driving licence required (DK, EL, ES, FI, GB, IT, IE, LU, AT; not in FR). Maximum speed 30 km/h or 40 km/h.

Data availability: All countries (except DK prior to 1997, AT, FR, GB, IE from 1996 onwards, LU).

Value included in another value:

agricultural machine (FR), construction or agricultural machine (DK, AT prior to 1997), agricultural or industrial tractor (LU), other motor vehicle (GB), other (IE from 1996 onwards).

**BUS OR COACH**

Definition: Motor vehicle with at least four wheels, used for transporting people. Public or private use. Type D driving licence required (BE, GB, IE, NI). Includes bus, more than 8 and 16 seats, minibus, trolley-bus (except LU), scheduled bus, unscheduled bus, school bus.

Data availability: All countries.

**CAR OR TAXI**

Definition: Includes car, taxi. Motor vehicle with four wheels. Used to transport only or mainly people. Seating for no more than 8 passengers. Type B driving licence required. Includes taxi-bus (NL).

Data availability: All countries.

**HEAVY GOODS VEHICLE**

Definition: Includes road tractor, road tractor with semi trailer, lorry over 3,5 tonnes. Motor vehicle with at least four wheels, with a permissible gross vehicle weight of over 3.5 tonnes, used only for the transport of goods. With or without a trailer. Type C driving licence required. Includes lorry, over 3.5 tonnes ; road tractor ; road tractor with semi-trailer ; lorry with trailer ; tanker (except FI).

Note: Lorries cannot systematically be categorised as over 3.5 tonnes (DK, IT).

Data availability: All countries (except DE, IT).

**LORRY, LESS THAN 3,5 TONNES**

Definition: Motor vehicle with a permissible gross vehicle weight of less than 3.5 tonnes, used only for the transport of goods. Type B driving licence required.

Note: Lorries cannot systematically be categorised as less than 3.5 tonnes (DK, IT).

Data availability: All countries (except DK, IT, LU).

**MOPED**

Definition: Motor vehicle with two wheels, with an engine size of less than 50 cc. Design speed between 25 km/h and 50 km/h. One or two seats. Minimum age for driver between 14 and 18 (except IT). No driving licence required (ES, FR, FI, GB, IT, PT, SE). Unregistered vehicle (BE, DK, ES, FR, SE).

Data availability: All countries (except IE from 1996 onwards).

Value included in another value:

Two wheeled motor vehicle (IE from 1996 onwards).

**MOTORCYCLE**

Definition: Motor vehicle with two or three wheels (not three wheeled in DK), with an engine size of more than 50 cc. With a trailer possible (except DK). With a sidecar possible. Registered vehicle (except PT). Type A driving licence required. Includes motor scooter (except FR).

Data availability: All countries (except IE from 1996 onwards).

**Value included**

**in another value:** two wheeled motor vehicle (IE from 1996 onwards).

**OTHER VEHICLE**

**Definition:** Includes other non-motor vehicle, other motor vehicle.

**PEDAL CYCLE**

**Definition:** Vehicle with at least two wheels, without engine, moved by pedals or hand cranks. With or without a trailer. With or without passengers. Ridden in the carriageway. Ridden on the pavement (except DK, LU).

**Data availability:** All countries.

**PEDESTRIAN**

**Definition:** Wherever a person's person class has been identified as being pedestrian, its vehicle type is "pedestrian". This as opposed to older version of CARE where a pedestrian didn't have a vehicle type.

**Data availability:** All countries.

**JUNCTION TYPE****JUNCTION**

**Definition:** Road intersection with three or more arms. Not grade separated. Includes T junction, Y junction, crossroad, level crossing (except DK, FI, GB, NI), roundabout (except FR), multiple junction.

**Data availability:** All countries (except EL).

**CROSSROAD**

**Definition:** Road intersection with four arms. Opinion of the police (DK, ES, FI; not AT).

**Data availability:** All countries (except BE, EL).

**NOT AT A JUNCTION**

**Definition:** Position on road more than 20m from a junction or roundabout (GB, IE, NI, NL, AT). Position on road more than 50m from a junction (FR). Opinion of the police (BE, DK, ES, FI, IT, LU, SE).

**Data availability:** All countries (except EL).

**ROUNDAABOUT**

**Definition:** Circular highway. Includes sections of the road leading into it, within 20m (GB, IE, NI, AT). Opinion of the police (DK, ES, FR, IT).

**Data availability:** All countries (except BE, DK, EL, FI, LU, PT).

**T OR Y JUNCTION**

**Definition:** Road intersection with three arms. Includes T junction, Y junction, staggered junction.

**Data availability:** All countries (except BE, EL, FI, IT, PT).

## 7 List of tables

Table 1:	Annual number of injury accidents by country, 1996-2005 .....	11
Table 2:	Annual number of fatalities by country, 1996-2005 .....	13
Table 3:	Annual number of fatal accidents by country, 1996-2005* .....	14
Table 4:	Annual number of pedestrian fatalities by country, 1996-2005 .....	15
Table 5:	Annual number of pedal cyclist fatalities by country (includes all riders and passengers of pedal cycles), 1996-2005 .....	16
Table 6:	Annual number of moped rider & passenger fatalities by country, 1996-2005 .....	16
Table 7:	Annual number of motorcycle rider & passenger fatalities by country, 1996-2005 .....	17
Table 8:	Annual number of fatalities in accidents involving cars or taxis by country (Attention: fatalities in cars or taxis plus all opponents fatalities), 1996-2005 .....	18
Table 9:	Annual number of fatalities in accidents involving heavy goods vehicles >3,5t by country (Attention: fatalities in heavy goods vehicles plus all opponents fatalities), 1996-2005 .....	18
Table 10:	Annual number of fatalities in accidents involving lorries <3,5t by country (Attention: fatalities in lorries <3,5t plus all opponents fatalities), 1996-2005 .....	19
Table 11:	Annual number of fatalities by country in accidents involving buses or coaches (Attention: fatalities in buses plus all opponents fatalities), 1996-2005 .....	19
Table 12:	Annual number of fatalities by age group by country, 1995-2000 .....	22
Table 13:	Annual number of fatalities by age group by country, 2002-2005 .....	23
Table 14:	Annual number of female fatalities by country, 1996-2005 .....	24
Table 15:	Annual number of male fatalities by country, 1996-2005 .....	25
Table 16:	Annual number of female fatalities by country, drivers (1996-2005) .....	26
Table 17:	Annual number of male fatalities by country, drivers (1996-2005) .....	26
Table 18:	Annual number of female fatalities by country, passengers (1996-2005) .....	27
Table 19:	Annual number of male fatalities by country, passengers (1996-2005) .....	27
Table 20:	Annual number of female fatalities by country, pedestrians (1996-2005) .....	28
Table 21:	Annual number of male fatalities by country, pedestrians (1996-2005) .....	28
Table 22:	Number of total fatalities by age group by country, 2005 .....	29
Table 23:	Number of female fatalities by age group by country, 2005 .....	29
Table 24:	Number of male fatalities by age group by country, 2005 .....	30
Table 25:	Number of fatalities aged 0 to 15 by mode of transport (in which the fatality was travelling) by country, 2005 .....	30
Table 26:	Number of fatalities aged 16 to 24 by mode of transport (in which the fatality was travelling) by country, 2005 .....	31
Table 27:	Number of fatalities aged 25 to 64 by mode of transport by country, 2005 .....	31
Table 28:	Number of fatalities aged 65+ by mode of transport (in which the fatality was travelling) by country, 2005 .....	32
Table 29:	Number of pedestrian fatalities by age group by country, 2005 .....	33
Table 30:	Number of pedal cyclist fatalities by age group by country, 2005 .....	34
Table 31:	Number of moped and motorcycle rider fatalities by age group by country, 2005 .....	34
Table 32:	Number of moped and motorcycle passenger fatalities by age group by country, 2005 .....	35
Table 33:	Number of car or taxi driver fatalities by age group by country, 2005 .....	35
Table 34:	Number of car or taxi passenger fatalities by age group by country, 2005 .....	36
Table 35:	Number of fatalities in heavy goods vehicles and lorries <3,5t by age group by country, 2005 .....	36
Table 36:	Number of fatalities in buses or coaches by age group by country, 2005 .....	37
Table 37:	Number of fatalities by person class and age group by country, 2005 .....	37
Table 38:	Number of fatalities by mode of transport (in which the fatality was travelling) and type of area by country, 2005 .....	39
Table 39:	Number of fatalities by month by country, 2005 .....	40
Table 40:	Total number of fatalities by day of week by country, 2005 .....	41
Table 41:	Number of fatalities by day of week by country, 2005 (drivers) .....	42
Table 42:	Number of fatalities by day of week by country 2005 (passengers) .....	42
Table 43:	Number of fatalities by day of week by country, 2005 (pedestrians) .....	43
Table 44:	Number of fatalities by hour of day by country, 2005 .....	44
Table 45:	Number of pedestrian fatalities by hour of day by country, 2005 .....	46
Table 46:	Number of fatalities by type of area and road by country, 2005 .....	48
Table 47:	Number of pedestrian fatalities by type of area and road by country, 2005 .....	49
Table 48:	Number of fatalities by type of junction by country, 2005 .....	49

Table 49:	Number of pedestrian fatalities by type of junction by country, 2005 .....	50
Table 50:	Number of fatalities by weather conditions by country, 2005 .....	51
Table 51:	Number of fatal accidents by month by country, 2005 .....	52
Table 52:	Number of fatal accidents <sup>1</sup> by day of week by country, 2005 .....	52
Table 53:	Number of fatal accidents by hour of day by country, 2005 .....	53
Table 54:	Number of fatal accidents by type of area and road by country, 2005 .....	54
Table 55:	Number of fatal accidents by type of junction by country, 2005 .....	55
Table 56:	Number of fatal accidents by weather conditions by country, 2005 .....	56

## 8 List of figures

Figure 1:	Annual number of fatalities, injury accidents and injured people (EU-25), 1996-2005 .....	7
Figure 2:	Fatalities per million inhabitants, 2005 compared to 1995 (EU-25).....	7
Figure 3:	Share of fatalities by area type, 2005 .....	8
Figure 4:	Distribution of male and female fatalities by person class, 2005* .....	8
Figure 5:	Distribution of fatalities by mode of transport, 2005 .....	9
Figure 6:	Fatalities of children per million inhabitants (aged 0-14 years), 2005 .....	9
Figure 7:	Fatalities of seniors per million inhabitants (aged 65+), 2005 .....	10
Figure 8:	Percentage change in number of fatalities and injury accidents by country (2005 compared to 1996).....	11
Figure 9:	Annual number of injury accidents by country (BE – IT), 1996-2005 .....	12
Figure 10:	Annual number of injury accidents by country (LU-UK), 1996-2005* .....	12
Figure 11:	Annual number of fatalities by country (BE-IT), 1996-2005* .....	13
Figure 12:	Annual number of fatalities by country (LU-UK), 1996-2005.....	14
Figure 13:	Percentage change in number of fatalities by mode of transport in EU-14 (2005 compared to 1996).....	15
Figure 14:	Annual number of fatalities by mode of transport (in which the fatality was travelling, includes driver & passenger), EU-14, 1996-2005.....	17
Figure 15:	Annual number of fatalities involving different modes of transport, EU-14 (Attention: fatalities in specific mode of transport plus all opponents fatalities), 1996-2005 .....	20
Figure 16:	Percentage change in number of fatalities by person age group (EU-14), 2005 compared to 1993.....	21
Figure 17:	Increase / decrease of number of fatalities by gender (EU-14), 2005* compared to 1996 ....	21
Figure 18:	Annual number of fatalities by year and age, EU-14 (1996 and 2005) .....	24
Figure 19:	Annual distribution of fatalities by gender, EU-14 (1996 and 2005) .....	25
Figure 20:	Fatalities by age group and mode of transport (EU-14), 2005 .....	33
Figure 21:	Fatalities by type of area and mode of transport (EU-14), 2005 .....	38
Figure 22:	Number of fatalities by month (EU-14), 2005 .....	40
Figure 23:	Total number of fatalities by day of week and person class (EU-14), 2005 .....	41
Figure 24:	Number of fatalities by hour of day (EU-14), 1996 and 2005 .....	45
Figure 25:	Number of pedestrian fatalities by hour of day (EU-14), 1996 and 2005 .....	47
Figure 26:	Number of fatalities by type of area by country, 2005 .....	47
Figure 27:	Number of pedestrian fatalities by type of area by country, 2005 .....	48
Figure 28:	Number of fatalities by weather conditions (EU-14), 2005 .....	51